

Indicators based on Continuous Pnad microdata (IBGE) (3rd quarters of 2016, 2021, 2023 and 2024)

MUDE com Elas

Working conditions of the Brazilian population, broken down by sex, race and age group of young people



Index

MUDE com Elas	3
Introduction	4
PART 1 - Indicators based on Continuous Quarterly Pnad data (2016, 2021, 2023 e 2024)	6
1.1 Unemployment rate	7
1.2 Position in occupation	8
1.3 Underutilization of the workforce	9
1.4 Informality	10
1.5 Length of time in current job	10
1.6 Average income	11
1.7 Unemployed people with 2 years or more of job search time	12
1.8 Discouraged population	13
1.9 Net school attendance	14
Final considerations	15
PNAD Data Tables 2016 to 2024	16

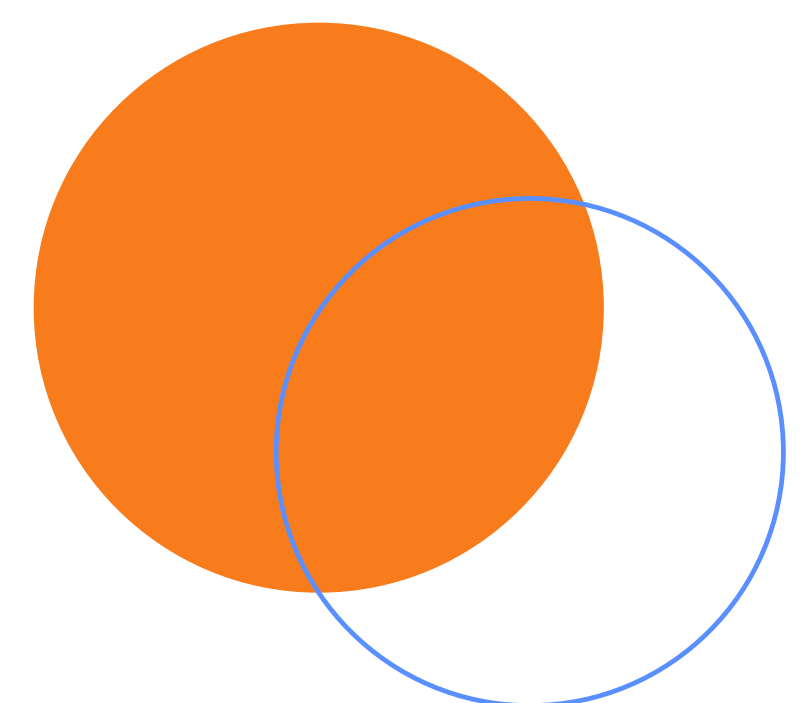


MUDE com Elas

The MUDE com Elas project, implemented by CEERT and Ação Educativa, with the support of Terre des Hommes and the German Ministry for Cooperation and Development (BMZ), is a benchmark transformative action in the Southern Cone program and contributes to achieving the strategic objective of TDH focused on promoting gender justice to live in a world free of violence and discrimination based on sex. **For the Southern Cone program, there is no gender justice without racial-ethnic justice.**

The MUDE com Elas Project is therefore a multi-stakeholder initiative aimed at overcoming gender and racial inequalities in the Brazilian labor market, with special attention to young black women. Its structure is based on two main fronts: political advocacy and professional insertion. The central objective is to increase the access and permanence of young black women in the labor market, through training, knowledge production, advocacy and the mobilization of a broad multi-stakeholder network made up of civil society organizations, companies, public managers and young people themselves.

The experience of the first phase of MUDE com Elas (2020-2023) shows that social mobilization and advocacy actions are essential to promote structural, sustainable and lasting changes in tackling gender and racial discrimination in the labor market. Based on these actions, the project was able to broaden and deepen the discussion on the subject, draw up proposals for public policies and directly influence public decisions with the potential to expand opportunities and improve the living conditions of young people. **Inspired by the Freirean perspective of "hope", the MUDE com Elas Multi-Actor Network is one of the main legacies of the initiative, making it possible to strengthen dialogue between different social sectors and promote concrete and sustainable change in the reality of work in Brazil.**



INTRODUCTION

The information was compiled based on microdata from the Continuous National Household Sample Survey [PNAD Contínua, IBGE], taking into account the criteria for capturing the topics investigated in the survey questionnaires, as well as the frequency and availability of dissemination. In addition, a minimum threshold of statistical precision was established for the presentation of indicator values. For analysis purposes, the tabular plan was structured according to the disclosure domains defined by the IBGE.



Indicators calculated using microdata from the Continuous Quarterly PNAD (3rd quarters of 2016, 2021, 2023 and 2024).

The way the data is presented seeks to show inequalities of sex, race and age, as well as a combination of these dimensions, making it possible to consider their intersectionality.

With regard to the age groups considered, it was of interest to highlight data corresponding to the youth age group - from 15 to 29 years old, as recognized by the Youth Statute. However, it was necessary to present data from the age of 14, which corresponds to the legal age of the Apprenticeship Law, since this is how the IBGE data is organized. Within this age spectrum that corresponds to youth, we tried to differentiate into three large blocks, according to the sections that the academic field has already been dealing with: **young adolescents (14 or 15 to 17); young-young (18 to 24 years old) and young adults (25 to 29 years old)**. For comparison purposes, the same general data has also been presented, which groups together all the age groups that make up the population estimated² in the survey.

- **Young adolescents: 14 or 15 to 17 years old**
- **Young-young: 18 to 24 years old**
- **Young adults: 25 to 29 years old**

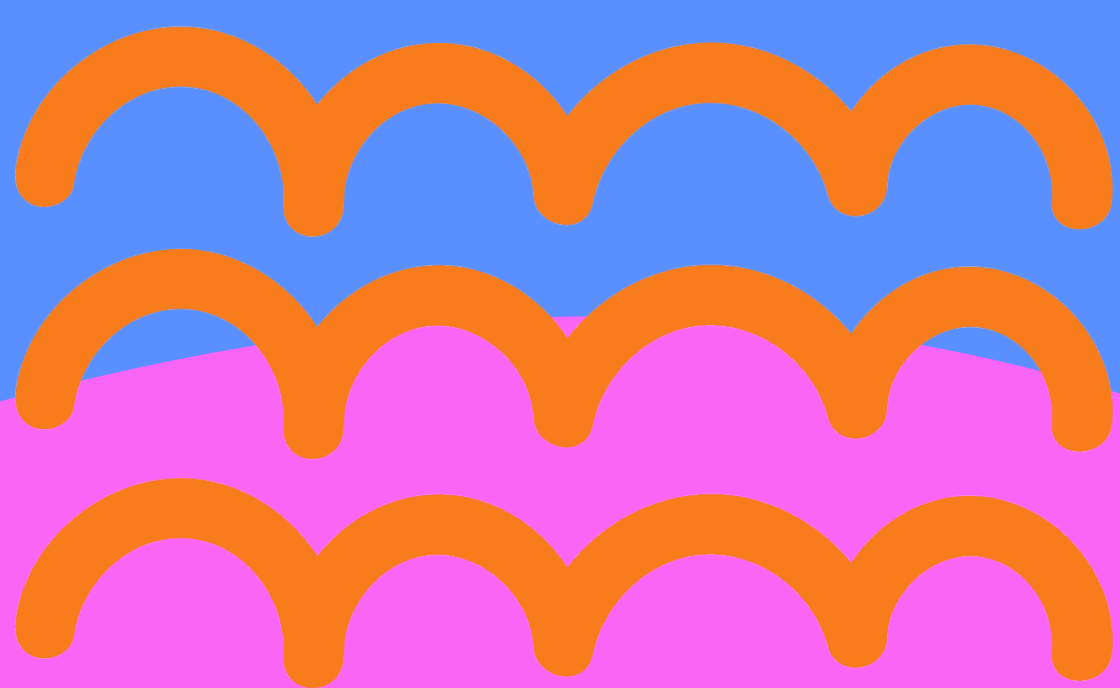
As for the ethnic-racial section, the aim was to highlight the discrepancies between **black and white people**, with the aim of making visible the effects of structural racism in Brazilian society. **In this sense, the black population is understood by the categories of black and brown people used by the IBGE. White people, on the other hand, comprise the white and yellow color/race categories.** Also, for comparison purposes, in addition to black and white people, total data is presented, which includes all color/race categories, including indigenous people. The data also included the territorial cut-off, with data presented for the national territory, the state of São Paulo, the São Paulo Metropolitan Region and the municipality of São Paulo - the areas where the Change with Them Project was carried out.

[2] In some cases, there was a clear indication of the low precision of the estimate (coefficient of variation above 15.0%), making it impossible to disaggregate by age groups or specific population segments. In these situations, it was decided to present more aggregated information in order to respect the criterion adopted as the estimate's precision parameter.

PART 1:

Indicators based on Quarterly Continuous PNAD data (2016, 2021, 2023 and 2024)

The indicators presented below are derived from data collected and published quarterly in the Continuous Pnad, thus making it possible to monitor information on a conjunctural basis. The quarters used here were the 3rd of each year.



1.1 | Unemployment rate

The IBGE defines the unemployment rate as a measure³ of the proportion of unemployed people in relation to the labor force, expressed as a percentage.

The unemployment rates in Brazil and the São Paulo Metropolitan Region (RMSP) fell in the third quarter of 2024, compared to the same period in 2023, from 7.7% to 6.4% and from 8.3% to 6.6%, respectively. The current levels are even lower than those seen in 2016.

According to the data presented, it can be seen that the unemployment rates are higher among black people, women and the young na compared to white people, men and the working-age population as a whole, respectively. In a cascade effect, the group with the greatest difficulty in entering the labor market emerges: **young black women, with an unemployment rate of 16.0% in 2024 in the country – approximately 3.6 times the rate perceived by white men in the total population aged 14 and over (4.4%).** A difference which, in relative terms, did not reduce from 2023 to 2024, when the rates for these groups were 18.3% and 5.1%, respectively, just as it had not reduced from 2021 to 2023, even with the general improvement in occupation in both periods - signaling a context of reinforcement of structural inequalities between the groups.

When looking at young adolescents, aged between 14 and 17, the problem is even greater: **more than a third of the workforce in this group has no job and is looking for one in Brazil (35.3%).**

It is also worth considering that this is a segment that is of school age, but has often already entered the labor market to make up the family income.

[3] People aged 14 and over without a job in the reference week who took some effective action to get one in the 30-day reference period and were available to take it up in the reference week. People without work in the reference week who did not take effective action to get a job in the 30-day period because they had already got a job that they were going to start after the reference week are also considered to be unemployed (IBGE, 2021).



1.2 | Position at occupation

Looking at the occupational structure of the employed population, the national data for the 3rd quarter of 2024 shows a higher proportion of people in employment - in the private or public sector - among those aged between 14 and 29 (74.6%), compared to the working-age population as a whole (56.5%).

Employment without a formal contract is also more common among young people. The percentage of people employed in the private sector without a formal contract in the total number of young people in Brazil, for example, is 22.9%, while in the total working-age population this proportion is 13.9%. The proportion is even higher when we look at young black men who have these jobs (27.8%) - while 18.7% of young white women have them.

Young people with signed employment contracts in the private sector:

Young black women 44,0%

Young black men 44,5%

Young white women 50,1%

Young white men 50,2%

When analyzing the employment of young people in the private sector with a formal contract, it can be seen that **50.1% of young white women** have this job, while among **young black women** the percentage is **44%**, a difference of 6.1 percentage points. Among **50.2%** of white men have a formal contract, compared to **44.5%** of black men - a difference of 5.7 percentage points.

The lack of protection for workers can also be measured by the number of self-employed people, who are sometimes informal, irregular or unpredictable. In the third quarter of 2024, it is estimated that 24.6% of the total employed population was self-employed. When self-employed workers without a CNPJ are analyzed in the country, there is a significant racial difference. **The percentage without formalization reaches 81.6% of black men and 79.0% of black women who are self-employed, while for white men and white women these percentages are 67.5% and 65.2%, respectively.** The difference is 14.1 p.p. when comparing black and white men, and 16.4 p.p. between black men and white women.

1.3 | Underutilization of the workforce

The rate of underutilization of the workforce is calculated as the percentage of people underemployed⁴ due to insufficient hours, added to the unoccupied people and the potential workforce⁵, in relation to the expanded workforce⁶.

Looking at the underutilization data for the third quarter of 2024, it can be seen, as in the same period of the other years analyzed, **that the female workforce is more underutilized than that of men, when comparing people of the same color/race. The most important difference is when comparing the rate for black women, which is higher (23.2%), with that for white men, which is 9.6%. The difference between these two segments is 13.6 p.p.** This means that the percentage rate for black women is more than double that of white men.



23,2%
of black women in the workforce are underutilized, among white men the number drops to **9,6%**

[4] Condition in which the worker works less than 40 hours a week, has the availability to work more hours, either in a second job or by replacing their current job with one that has a longer workload, and is interested in working more hours (IBGE, 2021).

[5] People aged 14 and over who were neither employed nor unemployed during the reference week, but who had the potential to become the labor force. This contingent is made up of two groups: people who effectively searched for work, but were not available for work in the reference week; and people who did not effectively search for work, but would like to have a job and were available for work in the reference week (IBGE, 2021).

[6] The sum of the people in the labor force and the share of people in the potential labor force (IBGE, 2021).

1.4 | Informality

The informality rate was calculated by admitting as informal private sector employees without a signed work permit, domestic workers without a signed work permit, employees and self-employed workers without social security contributions, and auxiliary family workers, i.e. the number of people employed without a work and/or social security permit.

Data from the 3rd quarter of 2024 shows that **Brazilian youth are more likely to be informal** (with 39.7% of those employed in this condition) than the working-age population as a whole (which has 35.9% of those employed in an informal situation).

Black working-age youth are more prone to informality than white youth: the rate for young black women (40.8%) is 8.4p.p higher than that of young white women (32.4%), while the rate for young black men (45.3%) is 10.3p.p higher than for young white men (35.1%).

In the case of **young black men**, almost half of whom are employed in this way (45.3%), informality reaches **81.4%** if we look at those aged between **14 and 17**.

For all the groups defined, there was a reduction in the informality rate in 2024, compared to the data for 2023. The reduction in the overall level of informality among the country's working-age population to 35.9%, however, was not enough to exceed the 2016 level (35.8%).

1.5 Length of time in current job

The proportion of employed people with less than 1 year in their current job, either sole or main, is being used as an indicator in the workplace. Its purpose is to analyze which population segments are most affected by shorter-term occupations.

Looking at the data for the third quarter of 2024, it can be seen that there is a higher proportion of young people in jobs that have been filled more recently (41.6%), with less than a year's tenure, than in the total working-age population (23.9%). In addition, the data reveals a greater problem in the case of black people, with higher rates compared to white people. Approximately 45.7% of young black women, for example, had been in their current job for less than a year, while among young white men this proportion was 36.0%.

1.6 | Income

The usual average monthly income of employed people, considering all the person's jobs, shows important differences in terms of the attributes analyzed. **When comparing total monthly income from work, black women earned, on average, 46.3% of the income of white men in Brazil in the 3rd quarter of 2024 - in other words, they earned 53.7% less.** This is a big difference and one that has remained relatively stable compared to 2023 and 2021, the last years analyzed, when the average income of black women was around 46.5% and 46.3% of the income of white men, respectively.

Still looking at the data for the third quarter of 2024, in the RMSP this difference is even greater, since black women had average earnings of approximately 37.8% of those earned by white men (62.2% lower).

When comparing the earnings of black and white women, the inequality persists: the former had average earnings of 62.1% of the latter. In the RMSP, the difference is once again greater: employed black women have an average income that is approximately half that of white women (54.1%). The average income of white women is also higher than that of black men - both in the country as a whole and in the state, metropolitan region and municipality of São Paulo.

There is also a significant difference between the average earnings of young people, compared to the average amounts received by the general population. In 2024, young people in the country received average earnings that corresponded to 67.7% of the general average of the employed population.



1.7 | Unemployed people with 2 years or more of job search time

When we consider the proportion of the working-age population who have been looking for work for two years or more, there is a difference according to gender, as both black and white women have significantly higher percentages than black and white men.

In Brazil, in the third quarter of 2024, 24.1% of Black women were unemployed, a percentage very close to that of white women, which was 24.3%. Among white men, the rate drops to 18.9%. Among Black men, the percentage is even lower: 16.7%.

Looking at the variation between 2016, 2021, 2023 and 2024, the indicator again showed a drop in the most recent period (21.0%), compared to 2023, when the percentage of unemployed people looking for work for two years or more in the country was 22.2%. In any case, it's still not enough to return to the level of 2016 - when the proportion was 19.8%.



1.8 | Population discouraged

Discouraged people⁷ are the segment of the labor force that has given up looking for an occupation mainly due to the unfavorable timing of job opportunities in a context of low or no economic growth. It is a way of measuring hidden unemployment.

The estimate for the discouraged population in the third quarter of 2024 was 11.3% lower than in the same period of 2023, a 39.6% reduction compared to 2021, indicating a significant reduction in discouragement in Brazil. It should also be added that the absolute number of people in these conditions has dropped to a lower level than in 2016 (3,106 versus 3,481 thousand people).

It should also be noted that discouragement affects the population in a very unequal way: in 2024, the number of black women in this condition (1.276 million) is around four times higher than that of white men (322 thousand) and 2.7 times higher than that of white women (468 thousand). Among black men, the total number of discouraged workers (1.020 million) is more than double that of white women and more than triple that of white men.

Among young people, the inequalities are even greater: the number of young black women who are unemployed is 3.2 times higher than that of young white women, while the number of young black men is 3.6 times higher than that of young white men.

[7] People who do not have a job and would like to, but who for some reason are not actively seeking one. This includes people aged 14 and over who are out of the labor force and available to take up a job, but have not taken steps to find work in the 30-day reference period of the survey because: they have not found suitable work; they have no work experience or qualifications; there is no work in the area where they live or; they cannot find work because they are considered too young or too old.

1.9 | Attendance school net

According to the Continuous Quarterly Pnad data (3rd quarter), it is estimated that in 2024, 73.1% of young people aged 15 to 17 and 27.4% of those aged 18 to 24 were attending or had already completed regular secondary school or higher education, respectively. **Proportions low, however, higher than those estimated in the three other periods analyzed: 2016, 2021, 2023 and 2024.**

However, there is also a distinction in the proportions of the different groups analyzed, especially in terms of the color/race of people of higher education age (18 to 24). In the country, while 43.6% of young white women in this age group were studying or had already completed higher education, among young black men the percentage was 16.8%.



Final considerations

The data presented shows that, despite some improvements in occupation and education indicators over the years, structural inequalities persist which disproportionately affect certain social groups. Black women, young people and the black population in general continue to face greater difficulties in entering the labor market, both in terms of unemployment and informality and precarious working conditions. The unemployment rate for young black women, for example, remains significantly higher than that of young white men, and informality affects young black men in particular, revealing an inequality that persists even in the face of advances in general employability. In addition, the average earnings of these groups are consistently lower than those of young whites, consolidating a scenario of economic disparity that directly impacts the social mobility and quality of life of these populations.

The challenges extend to education, with significant differences in access to higher education between black and white young people, which could perpetuate these inequalities in the long term. The fact that a significant number of young people have to enter the labor market early to contribute to the family income, often in precarious conditions, reinforces the need for public policies that expand opportunities and guarantee better working and study conditions.

Given this context, it is essential to adopt strategies aimed at racial and gender equity, considering the intersectionality that shape the working and educational experiences of Brazilian youth. Only with effective and continuous action will it be possible to transform this scenario and build a fairer and more inclusive labor market.

PNAD DATA TABLES

2016 to 2024

1. Working-age population _____	17
2. Population in the labor force _____	21
3. Participation rate _____	25
4. Employed population _____	29
5. Position in occupation _____	33
6. Informality rate _____	41
7. Self-employed workers without CNPJ in main occupation _____	45
8. Length of time employed _____	49
9. Usual income from all jobs _____	53
10. Underutilization rate _____	57
11. Unemployed population _____	61
12. Unemployment rate _____	65
13. Search time for the unemployed _____	69
14. Discouraged population _____	73
15.1 Work and study situation 14 to 29 years old _____	77
15.2 Work and study status 14 to 17 years old _____	81
15.3 Work and study status 18 to 24 years old _____	85
15.4 Work and study status 25 to 29 years old _____	89
16.1 Net attendance 15 to 17 years _____	93
16.2 Net attendance 18 to 24 years _____	94
17. Years of study 14 to 29 years and 14+ _____	95
18. Do household chores _____	97
19. Caring for people _____	101
20. Hours spent on chores and care _____	105

Estimated working-age population by age group, sex and color/race

Brazil, 3rd Quarter 2024 (In 1,000 people)

Sex and color/race	Population total aged 14 and over	Young people aged 14 to 29	14 a 17 years	18 a 24 years	25 a 29 years
Black women	50.964	15.026	3.470	6.402	5.154
White women	39.760	9.901	2.349	4.227	3.325
Black men	49.036	15.810	3.801	6.826	5.183
White men	35.846	9.844	2.257	4.179	3.408
Total¹	176.446	50.820	11.933	21.745	17.142

Brazil, 3rd Quarter 2023 (In 1,000 people)

Sex and color/race	Population total aged 14 and over	Young people aged 14 to 29	14 a 17 years	18 a 24 years	25 a 29 years
Black women	49.927	15.211	3.552	6.616	5.043
White women	40.068	10.004	2.298	4.270	3.436
Black men	47.818	15.702	3.835	6.798	5.069
White men	36.402	10.200	2.297	4.409	3.493
Total¹	174.983	51.366	12.034	22.201	17.130

Brazil, 3rd Quarter 2021 (In 1,000 people)

Sex and color/race	Population total aged 14 and over	Young people aged 14 to 29	14 a 17 years	18 a 24 years	25 a 29 years
Black women	48.320	15.335	3.533	6.829	4.972
White women	40.105	10.423	2.397	4.565	3.461
Black men	46.836	15.935	3.833	7.084	5.018
White men	35.920	10.416	2.387	4.595	3.434
Total¹	171.886	52.343	12.201	23.176	16.966

Brazil, 3rd Quarter 2016 (In 1,000 people)

Sex and color/race	Population total aged 14 and over	Young people aged 14 to 29	14 a 17 years	18 a 24 years	25 a 29 years
Black women	44.874	15.614	3.944	6.905	4.765
White women	39.124	11.381	2.630	4.912	3.838
Black men	43.689	16.198	4.278	7.093	4.827
White men	35.025	11.172	2.655	4.797	3.720
Total¹	163.128	54.509	13.545	23.771	17.193

Source: IBGE. Continuous Quarterly Pnad

Note: (1) The total includes people of unknown color/race and indigenous people.

Note: a) Black people= black and brown; white people= white and yellow

Estimated working-age population by age group, sex and color/race

State of São Paulo, 3rd Quarter 2024 (In 1,000 people)

Sex and color/race	Total population aged 14 and over	Young people aged 14 to 29	14 a 17 years	18 a 24 years	25 a 29 years
Black women	8.337	2.268	553	898	818
White women	11.980	2.734	643	1.170	920
Black men	8.349	2.611	598	1.112	901
White men	10.742	2.790	617	1.185	987
Total¹	39.531	10.438	2.418	4.382	3.638

State of São Paulo, 3rd Quarter 2023 (In 1,000 people)

Sex and color/race	Total population aged 14 and over	Young people aged 14 to 29	14 a 17 years	18 a 24 years	25 a 29 years
Black women	8.151	2.315	521	1.015	779
White women	12.072	2.833	637	1.198	998
Black men	7.721	2.467	566	1.072	828
White men	11.054	3.045	672	1.284	1.089
Total¹	39.107	10.681	2.399	4.578	3.704

State of São Paulo, 3rd Quarter 2021 (In 1,000 people)

Sex and color/race	Total population aged 14 and over	Young people aged 14 to 29	14 a 17 years	18 a 24 years	25 a 29 years
Black women	7.614	2.356	459	1.084	813
White women	12.377	3.045	719	1.330	996
Black men	7.370	2.421	548	1.078	796
White men	10.994	3.054	671	1.339	1.044
Total¹	38.493	10.932	2.407	4.857	3.668

State of São Paulo, 3rd Quarter 2016 (In 1,000 people)

Sex and color/race	Total population aged 14 and over	Young people aged 14 to 29	14 a 17 years	18 a 24 years	25 a 29 years
Black women	6.422	2.098	511	968	619
White women	12.372	3.361	788	1.380	1.193
Black men	6.528	2.407	643	1.019	745
White men	11.093	3.403	814	1.374	1.215
Total¹	36.498	11.292	2.759	4.748	3.785

Source: IBGE. Continuous Quarterly PNAAD

Note: (1) The total includes people of unknown color/race and indigenous people.

Note: a) Black people= black and brown; white people= white and yellow

Estimated working-age population by age group, sex and color/race

São Paulo Metropolitan Region, 3rd Quarter 2024 (In 1,000 people)

Sex and color/race	Total population aged 14 and over	Young people aged 14 to 29	14 a 17 years	18 a 24 years	25 a 29 years
Black women	4.334	1.139	305	431	403
White women	5.444	1.292	306	544	442
Black men	4.231	1.311	301	556	454
White men	4.714	1.250	297	518	435
Total¹	18.814	5.021	1.215	2.061	1.745

São Paulo Metropolitan Region, 3rd Quarter 2023 (In 1,000 people)

Sex and color/race	Total population aged 14 and over	Young people aged 14 to 29	14 a 17 years	18 a 24 years	25 a 29 years
Black women	4.237	1.206	256	553	396
White women	5.370	1.249	273	523	453
Black men	3.892	1.279	301	544	434
White men	4.937	1.457	298	624	535
Total¹	18.504	5.201	1.131	2.246	1.824

São Paulo Metropolitan Region, 3rd Quarter 2021 (In 1,000 people)

Sex and color/race	Total population aged 14 and over	Young people aged 14 to 29	14 a 17 years	18 a 24 years	25 a 29 years
Black women	3.988	1.257	227	584	445
White women	5.624	1.395	325	586	484
Black men	3.696	1.230	281	540	409
White men	4.885	1.403	283	618	502
Total¹	18.269	5.321	1.122	2.346	1.853

São Paulo Metropolitan Region, 3rd Quarter 2016 (In 1,000 people)

Sex and color/race	Total population aged 14 and over	Young people aged 14 to 29	14 a 17 years	18 a 24 years	25 a 29 years
Black women	3.283	1.069	241	493	335
White women	5.736	1.547	346	629	572
Black men	3.259	1.207	311	511	384
White men	5.160	1.660	400	689	572
Total¹	17.481	5.496	1.298	2.329	1.869

Source: IBGE. Continuous Quarterly Pnad

Note: (1) The total includes people of unknown color/race and indigenous people.

Note: a) Black people= black and brown; white people= white and yellow

Estimated working-age population by age group, sex and color/race

Municipality of São Paulo, 3rd Quarter 2024 (In 1,000 people)

Sex and color/race	Total population aged 14 and over	Young people aged 14 to 29	14 a 17 years	18 a 24 years	25 a 29 years
Black women	2.322	622	165	242	215
White women	3.283	720	156	307	257
Black men	2.155	689	148	290	251
White men	2.835	765	175	321	268
Total¹	10.657	2.820	649	1.170	1.001

Municipality of São Paulo, 3rd Quarter 2023 (In 1,000 people)

Sex and color/race	Total population aged 14 and over	Young people aged 14 to 29	14 a 17 years	18 a 24 years	25 a 29 years
Black women	2.261	664	147	297	220
White women	3.242	726	151	311	264
Black men	2.041	672	142	275	255
White men	2.893	840	180	357	303
Total¹	10.478	2.908	620	1.241	1.047

Municipality of São Paulo, 3rd Quarter 2021 (In 1,000 people)

Sex and color/race	Total population aged 14 and over	Young people aged 14 to 29	14 a 17 years	18 a 24 years	25 a 29 years
Black women	2.070	636	116	290	230
White women	3.438	809	180	324	306
Black men	1.876	605	138	232	235
White men	2.975	853	148	372	332
Total¹	10.390	2.912	584	1.220	1.109

Municipality of São Paulo, 3rd Quarter 2016 (In 1,000 people)

Sex and color/race	Total population aged 14 and over	Young people aged 14 to 29	14 a 17 years	18 a 24 years	25 a 29 years
Black women	1.759	562	127	260	175
White women	3.469	938	210	381	348
Black men	1.652	604	129	264	211
White men	3.118	1.010	225	424	361
Total¹	10.028	3.125	692	1.334	1.099

Source: IBGE. Continuous Quarterly Pnad

Note: (1) The total includes people of unknown color/race and indigenous people.

Note: a) Black people= black and brown; white people= white and yellow

Estimate of the population in the labor force, by age group, sex and color/race

Brazil, 3rd Quarter 2024 (In 1,000 people)

Sex and color/race	Total population aged 14 and over	Young people aged 14 to 29	14 a 17 years	18 a 24 years	25 a 29 years
Black women	26.340	7.663	461	3.770	3.431
White women	21.596	5.618	340	2.758	2.519
Black men	35.581	10.658	725	5.243	4.690
White men	26.014	6.698	418	3.188	3.093
Total¹	110.030	30.775	1.958	15.028	13.789

Brazil, 3rd Quarter 2023 (In 1,000 people)

Sex and color/race	Total population aged 14 and over	Young people aged 14 to 29	14 a 17 years	18 a 24 years	25 a 29 years
Black women	25.516	7.707	462	3.867	3.378
White women	21.557	5.736	327	2.771	2.638
Black men	34.448	10.437	705	5.227	4.505
White men	26.187	6.858	397	3.320	3.141
Total¹	108.154	30.875	1.897	15.254	13.723

Brazil, 3rd Quarter 2021 (In 1,000 people)

Sex and color/race	Total population aged 14 and over	Young people aged 14 to 29	14 a 17 years	18 a 24 years	25 a 29 years
Black women	24.823	8.046	487	4.179	3.380
White women	21.397	5.912	342	2.940	2.629
Black men	33.855	10.819	860	5.480	4.480
White men	25.938	7.145	462	3.524	3.158
Total¹	106.430	32.070	2.163	16.199	13.709

Brazil, 3rd Quarter 2016 (In 1,000 people)

Sex and color/race	Total population aged 14 and over	Young people aged 14 to 29	14 a 17 years	18 a 24 years	25 a 29 years
Black women	22.780	7.653	602	3.934	3.117
White women	21.110	6.470	420	3.142	2.909
Black men	31.915	10.791	973	5.444	4.374
White men	25.919	7.687	555	3.701	3.431
Total¹	101.978	32.678	2.555	16.260	13.862

Source: IBGE. Continuous Quarterly Pnad

Note: (1) The total includes people of unknown color/race and indigenous people.

Note: a) Black people= black and brown; white people= white and yellow

Estimate of the population in the labor force, by age group, sex and color/race

State of São Paulo, 3rd Quarter 2024 (In 1,000 people)

Sex and color/race	Total population aged 14 and over	Young people aged 14 to 29	14 a 17 years	18 a 24 years	25 a 29 years
Black women	4.966	1.388	104	677	606
White women	6.854	1.714	95	880	739
Black men	6.498	1.952	158	950	844
White men	7.945	1.976	112	955	909
Total¹	26.356	7.061	473	3.476	3.112

State of São Paulo, 3rd Quarter 2023 (In 1,000 people)

Sex and color/race	Total population aged 14 and over	Young people aged 14 to 29	14 a 17 years	18 a 24 years	25 a 29 years
Black women	4.972	1.499	126	780	593
White women	6.847	1.806	104	893	808
Black men	5.970	1.786	105	915	767
White men	8.195	2.146	113	1.030	1.003
Total¹	26.061	7.255	448	3.627	3.179

State of São Paulo, 3rd Quarter 2021 (In 1,000 people)

Sex and color/race	Total population aged 14 and over	Young people aged 14 to 29	14 a 17 years	18 a 24 years	25 a 29 years
Black women	4.636	1.603	94	864	645
White women	6.976	1.871	98	961	812
Black men	5.712	1.819	141	932	746
White men	8.191	2.232	131	1.092	1.009
Total¹	25.614	7.574	468	3.874	3.232

State of São Paulo, 3rd Quarter 2016 (In 1,000 people)

Sex and color/race	Total population aged 14 and over	Young people aged 14 to 29	14 a 17 years	18 a 24 years	25 a 29 years
Black women	3.846	1.306	107	710	489
White women	7.113	2.115	131	1.023	960
Black men	5.065	1.712	161	852	699
White men	8.431	2.407	152	1.102	1.153
Total¹	24.508	7.552	551	3.691	3.309

Fonte: IBGE. Pnad Contínua Trimestral

Nota: (1) O total inclui as pessoas com cor/raça ignorada e indígenas

Obs.: a) Pessoas negras = pretas e pardas; Pessoas brancas = brancas e amarelas

Estimate of the population in the labor force, by age group, sex and color/race

São Paulo Metropolitan Region, 3rd Quarter 2024 (In 1,000 people)

Sex and color/race	Total population aged 14 and over	Young people aged 14 to 29	14 a 17 years	18 a 24 years	25 a 29 years
Black women	2.602	687	(2)	330	306
White women	3.141	792	(2)	408	339
Black men	3.289	953	(2)	459	424
White men	3.572	876	(2)	412	411
Total¹	12.672	3.333	222	1.620	1.491

São Paulo Metropolitan Region, 3rd Quarter 2023 (In 1,000 people)

Sex and color/race	Total population aged 14 and over	Young people aged 14 to 29	14 a 17 years	18 a 24 years	25 a 29 years
Black women	2.643	798	(2)	420	312
White women	3.216	825	(2)	385	393
Black men	3.002	912	(2)	464	403
White men	3.707	1.048	(2)	502	499
Total¹	12.616	3.591	207	1.772	1.612

São Paulo Metropolitan Region, 3rd Quarter 2021 (In 1,000 people)

Sex and color/race	Total population aged 14 and over	Young people aged 14 to 29	14 a 17 years	18 a 24 years	25 a 29 years
Black women	2.584	893	(2)	473	368
White women	3.245	883	(2)	428	410
Black men	2.881	935	(2)	466	384
White men	3.692	1.023	(2)	495	486
Total¹	12.460	3.765	225	1.879	1.661

São Paulo Metropolitan Region, 3rd Quarter 2016 (In 1,000 people)

Sex and color/race	Total population aged 14 and over	Young people aged 14 to 29	14 a 17 years	18 a 24 years	25 a 29 years
Black women	2.048	698	(2)	370	276
White women	3.422	1.014	(2)	473	479
Black men	2.553	863	72	437	354
White men	3.934	1.126	(2)	535	539
Total¹	11.981	3.709	239	1.817	1.653

Source: IBGE. Continuous Quarterly Pnad

Note: (1) The total includes people of unknown color/race and indigenous people.

(2) The sample does not include a breakdown for this category (maximum CV of 15.0%)

Note: a) Black people= black and brown; White people= white and yellow

Estimate of the population in the labor force, by age group, sex and color/race

Municipality of São Paulo, 3rd Quarter 2024 (In 1,000 people)

Sex and color/race	Total population aged 14 and over	Young people aged 14 to 29	14 a 17 years	18 a 24 years	25 a 29 years
Black women	1.453	374	(2)	190	163
White women	1.932	455	(2)	229	203
Black men	1.706	501	(2)	233	234
White men	2.156	526	(2)	240	254
Total¹	7.296	1.876	112	900	864

Municipality of São Paulo, 3rd Quarter 2023 (In 1,000 people)

Sex and color/race	Total population aged 14 and over	Young people aged 14 to 29	14 a 17 years	18 a 24 years	25 a 29 years
Black women	1.443	424	(2)	226	163
White women	1.954	487	(2)	224	237
Black men	1.594	494	(2)	244	231
White men	2.169	590	(2)	281	278
Total¹	7.189	2.000	111	975	913

Municipality of São Paulo, 3rd Quarter 2021 (In 1,000 people)

Sex and color/race	Total population aged 14 and over	Young people aged 14 to 29	14 a 17 years	18 a 24 years	25 a 29 years
Black women	1.354	454	(2)	232	194
White women	1.955	497	(2)	217	258
Black men	1.447	450	(2)	195	225
White men	2.251	621	(2)	283	321
Total¹	7.033	2.030	99	927	1.004

Municipality of São Paulo, 3rd Quarter 2016 (In 1,000 people)

Sex and color/race	Total population aged 14 and over	Young people aged 14 to 29	14 a 17 years	18 a 24 years	25 a 29 years
Black women	1.096	380	(2)	201	148
White women	2.076	596	(2)	273	281
Black men	1.315	443	72	225	190
White men	2.391	694	(2)	321	338
Total¹	6.897	2.120	136	1.022	963

Source: IBGE. Continuous Quarterly Pnad

Note: (1) The total includes people of unknown color/race and indigenous people.

(2) The sample does not include a breakdown for this category (maximum CV of 15.0%) Note: a) Black people= black and brown; White people= white and yellow

Estimated participation rate, by age group, sex and color/race

Brazil, 3rd Quarter 2024 (In %)

Sex and color/race	Total population aged 14 and over	Young people aged 14 to 29	14 a 17 years	18 a 24 years	25 a 29 years
Black women	51,7	51,0	13,3	58,9	66,6
White women	54,3	56,7	14,5	65,3	75,8
Black men	72,6	67,4	19,1	76,8	90,5
White men	72,6	68,0	18,5	76,3	90,8
Total¹	62,4	60,6	16,4	69,1	80,4

Brazil, 3rd Quarter 2023 (In %)

Sex and color/race	Total population aged 14 and over	Young people aged 14 to 29	14 a 17 years	18 a 24 years	25 a 29 years
Black women	51,1	50,7	13,0	58,5	67,0
White women	53,8	57,3	14,2	64,9	76,8
Black men	72,0	66,5	18,4	76,9	88,9
White men	71,9	67,2	17,3	75,3	89,9
Total¹	61,8	60,1	15,8	68,7	80,1

Brazil, 3rd Quarter 2021 (In %)

Sex and color/race	Total population aged 14 and over	Young people aged 14 to 29	14 a 17 years	18 a 24 years	25 a 29 years
Black women	51,4	52,5	13,8	61,2	68,0
White women	53,4	56,7	14,3	64,4	76,0
Black men	72,3	67,9	22,4	77,4	89,3
White men	72,2	68,6	19,4	76,7	92,0
Total¹	61,9	61,3	17,7	69,9	80,8

Brazil, 3rd Quarter 2016 (In %)

Sex and color/race	Total population aged 14 and over	Young people aged 14 to 29	14 a 17 years	18 a 24 years	25 a 29 years
Black women	50,8	49,0	15,3	57,0	65,4
White women	54,0	56,9	16,0	64,0	75,8
Black men	73,1	66,6	22,8	76,7	90,6
White men	74,0	68,8	20,9	77,2	92,2
Total¹	62,5	59,9	18,9	68,4	80,6

Fonte: IBGE. Pnad Contínua Trimestral

Nota: (1) O total inclui as pessoas com cor/raça ignorada e indígenas

Obs.: a) Pessoas negras = pretas e pardas; Pessoas brancas = brancas e amarelas

Estimated participation rate, by age group, sex and color/race

State of São Paulo, 3rd Quarter 2024 (In %)

Sex and color/race	Total population aged 14 and over	Young people aged 14 to 29	14 a 17 years	18 a 24 years	25 a 29 years
Black women	59,6	61,2	18,8	75,5	74,2
White women	57,2	62,7	14,7	75,2	80,3
Black men	77,8	74,8	26,5	85,4	93,7
White men	74,0	70,8	18,1	80,6	92,1
Total¹	66,7	67,6	19,6	79,3	85,5

State of São Paulo, 3rd Quarter 2023 (In %)

Sex and color/race	Total population aged 14 and over	Young people aged 14 to 29	14 a 17 years	18 a 24 years	25 a 29 years
Black women	61,0	64,8	24,2	76,9	76,1
White women	56,7	63,8	16,3	74,6	81,0
Black men	77,3	72,4	18,5	85,3	92,6
White men	74,1	70,5	16,8	80,2	92,1
Total¹	66,6	67,9	18,7	79,2	85,8

State of São Paulo, 3rd Quarter 2021 (In %)

Sex and color/race	Total population aged 14 and over	Young people aged 14 to 29	14 a 17 years	18 a 24 years	25 a 29 years
Black women	60,9	68,0	20,4	79,7	79,4
White women	56,4	61,5	13,6	72,2	81,6
Black men	77,5	75,1	25,7	86,5	93,8
White men	74,5	73,1	19,5	81,6	96,7
Total¹	66,5	69,3	19,4	79,8	88,1

State of São Paulo, 3rd Quarter 2016 (In %)

Sex and color/race	Total population aged 14 and over	Young people aged 14 to 29	14 a 17 years	18 a 24 years	25 a 29 years
Black women	59,9	62,2	20,9	73,4	79,0
White women	57,5	62,9	16,7	74,2	80,4
Black men	77,6	71,1	25,1	83,6	93,8
White men	76,0	70,7	18,7	80,2	94,8
Total¹	67,1	66,9	20,0	77,7	87,4

Source: IBGE. Continuous Quarterly Pnad

Note: (1) The total includes people of unknown color/race and indigenous people.

Note: a) Black people= black and brown; white people= white and yellow

Estimated participation rate, by age group, sex and color/race

São Paulo Metropolitan Region, 3rd Quarter 2024 (In %)

Sex and color/race	Total population aged 14 and over	Young people aged 14 to 29	14 a 17 years	18 a 24 years	25 a 29 years
Black women	60,0	60,3	(2)	76,5	76,0
White women	57,7	61,3	(2)	75,0	76,8
Black men	77,7	72,7	(2)	82,6	93,3
White men	75,8	70,1	(2)	79,6	94,4
Total¹	67,4	66,4	18,3	78,6	85,4

São Paulo Metropolitan Region, 3rd Quarter 2023 (In %)

Sex and color/race	Total population aged 14 and over	Young people aged 14 to 29	14 a 17 years	18 a 24 years	25 a 29 years
Black women	62,4	66,2	(2)	75,9	78,7
White women	59,9	66,0	(2)	73,6	86,8
Black men	77,1	71,3	(2)	85,2	92,9
White men	75,1	72,0	(2)	80,5	93,2
Total¹	68,2	69,0	18,3	78,9	88,3

São Paulo Metropolitan Region, 3rd Quarter 2021 (In %)

Sex and color/race	Total population aged 14 and over	Young people aged 14 to 29	14 a 17 years	18 a 24 years	25 a 29 years
Black women	64,8	71,0	(2)	81,0	82,6
White women	57,7	63,3	(2)	73,0	84,8
Black men	78,0	76,0	(2)	86,2	93,9
White men	75,6	72,9	(2)	80,1	96,8
Total¹	68,2	70,8	20,1	80,1	89,6

São Paulo Metropolitan Region, 3rd Quarter 2016 (In %)

Sex and color/race	Total population aged 14 and over	Young people aged 14 to 29	14 a 17 years	18 a 24 years	25 a 29 years
Black women	62,4	65,3	21,5	75,1	82,5
White women	59,7	65,6	18,0	75,2	83,8
Black men	78,4	71,5	23,0	85,4	92,1
White men	76,2	67,8	(2)	77,6	94,2
Total¹	68,5	67,5	18,4	78,0	88,4

Source: IBGE. Continuous Quarterly Pnad

Note: (1) The total includes people of unknown color/race and indigenous people.

(2) The sample does not include a breakdown for this category (maximum CV of 15.0%) Note: a) Black people= black and brown; White people= white and yellow

Estimated participation rate, by age group, sex and color/race

Municipality of São Paulo, 3rd Quarter 2024 (In %)

Sex and color/race	Total population aged 14 and over	Young people aged 14 to 29	14 a 17 years	18 a 24 years	25 a 29 years
Black women	62,6	60,1	(2)	78,5	76,0
White women	58,8	63,2	(2)	74,5	78,8
Black men	79,2	72,7	(2)	80,5	93,3
White men	76,0	68,8	(2)	74,8	94,7
Total¹	68,5	66,5	17,2	76,9	86,3

Municipality of São Paulo, 3rd Quarter 2023 (In %)

Sex and color/race	Total population aged 14 and over	Young people aged 14 to 29	14 a 17 years	18 a 24 years	25 a 29 years
Black women	63,8	63,9	(2)	76,1	73,8
White women	60,3	67,1	(2)	72,1	90,0
Black men	78,1	73,5	(2)	88,7	90,7
White men	75,0	70,3	(2)	78,5	91,8
Total¹	68,6	68,8	17,9	78,6	87,2

Municipality of São Paulo, 3rd Quarter 2021 (In %)

Sex and color/race	Total population aged 14 and over	Young people aged 14 to 29	14 a 17 years	18 a 24 years	25 a 29 years
Black women	65,4	71,4	(2)	79,9	84,4
White women	56,9	61,4	(2)	67,0	84,4
Black men	77,1	74,4	(2)	83,8	95,8
White men	75,7	72,8	(2)	76,0	96,7
Total¹	67,7	69,7	16,9	76,0	90,6

Municipality of São Paulo, 3rd Quarter 2016 (In %)

Sex and color/race	Total population aged 14 and over	Young people aged 14 to 29	14 a 17 years	18 a 24 years	25 a 29 years
Black women	62,3	67,6	(2)	77,3	84,9
White women	59,8	63,5	(2)	71,8	80,9
Black men	79,6	73,3	(2)	85,1	90,1
White men	76,7	68,7	(2)	75,6	93,6
Total¹	68,8	67,8	19,6	76,6	87,6

Source: IBGE. Continuous Quarterly Pnad

Note: (1) The total includes people of unknown color/race and indigenous people.

(2) The sample does not include a breakdown for this category (maximum CV of 15.0%) Note: a) Black people= black and brown; White people= white and yellow

Estimated employed population, by age group, sex and color/race

Brazil, 3rd Quarter 2024 (In 1,000 people)

Sex and color/race	Total population aged 14 and over	Young people aged 14 to 29	14 a 17 years	18 a 24 years	25 a 29 years
Black women	23.893	6.438	299	3.076	3.063
White women	20.357	5.012	257	2.407	2.348
Black men	33.455	9.551	577	4.596	4.377
White men	24.867	6.110	322	2.876	2.913
Total¹	103.029	27.232	1.467	13.013	12.752

Brazil, 3rd Quarter 2023 (In 1,000 people)

Sex and color/race	Total population aged 14 and over	Young people aged 14 to 29	14 a 17 years	18 a 24 years	25 a 29 years
Black women	22.633	6.298	265	3.079	2.953
White women	20.055	5.009	246	2.322	2.442
Black men	31.911	9.104	511	4.441	4.153
White men	24.843	6.154	298	2.910	2.947
Total¹	99.838	26.675	1.325	12.807	12.543

Brazil, 3rd Quarter 2021 (In 1,000 people)

Sex and color/race	Total population aged 14 and over	Young people aged 14 to 29	14 a 17 years	18 a 24 years	25 a 29 years
Black women	20.142	5.682	244	2.765	2.673
White women	18.735	4.588	192	2.146	2.250
Black men	30.015	8.722	549	4.234	3.938
White men	23.729	5.957	299	2.830	2.827
Total¹	92.976	25.057	1.290	12.030	11.737

Brazil, 3rd Quarter 2016 (In 1,000 people)

Sex and color/race	Total population aged 14 and over	Young people aged 14 to 29	14 a 17 years	18 a 24 years	25 a 29 years
Black women	19.017	5.485	294	2.660	2.531
White women	18.792	5.161	232	2.369	2.560
Black men	28.080	8.608	631	4.157	3.821
White men	23.706	6.420	377	2.964	3.079
Total¹	89.821	25.737	1.539	12.179	12.019

Source: IBGE. Continuous Quarterly Pnad

Note: (1) The total includes people of unknown color/race and indigenous people.

Note: a) Black people= black and brown; white people= white and yellow

Estimated employed population, by age group, sex and color/race

State of São Paulo, 3rd Quarter 2024 (In 1,000 people)

Sex and color/race	Total population aged 14 and over	Young people aged 14 to 29	14 a 17 years	18 a 24 years	25 a 29 years
Black women	4.520	1.177	(2)	566	552
White women	6.467	1.526	(2)	774	685
Black men	6.094	1.749	121	841	787
White men	7.597	1.800	(2)	865	853
Total¹	24.763	6.278	333	3.055	2.890

State of São Paulo, 3rd Quarter 2023 (In 1,000 people)

Sex and color/race	Total population aged 14 and over	Young people aged 14 to 29	14 a 17 years	18 a 24 years	25 a 29 years
Black women	4.424	1.237	(2)	650	527
White women	6.381	1.586	(2)	756	754
Black men	5.569	1.585	(2)	802	724
White men	7.758	1.921	(2)	897	947
Total¹	24.199	6.341	272	3.112	2.957

State of São Paulo, 3rd Quarter 2021 (In 1,000 people)

Sex and color/race	Total population aged 14 and over	Young people aged 14 to 29	14 a 17 years	18 a 24 years	25 a 29 years
Black women	3.678	1.135	(2)	580	517
White women	6.037	1.427	(2)	699	685
Black men	5.003	1.428	(2)	701	666
White men	7.393	1.803	(2)	861	872
Total¹	22.188	5.823	211	2.857	2.755

State of São Paulo, 3rd Quarter 2016 (In 1,000 people)

Sex and color/race	Total population aged 14 and over	Young people aged 14 to 29	14 a 17 years	18 a 24 years	25 a 29 years
Black women	3.097	862	(2)	442	377
White women	6.231	1.637	(2)	747	832
Black men	4.411	1.322	83	631	609
White men	7.566	1.925	83	825	1.017
Total¹	21.353	5.756	268	2.647	2.841

Source: IBGE. Continuous Quarterly Pnad

Note: (1) The total includes people of unknown color/race and indigenous people.

(2) The sample does not include a breakdown for this category (maximum CV of 15.0%) Note: a) Black people= black and brown; White people= white and yellow

Estimated employed population, by age group, sex and color/race

São Paulo Metropolitan Region, 3rd Quarter 2024 (In 1,000 people)

Sex and color/race	Total population aged 14 and over	Young people aged 14 to 29	14 a 17 years	18 a 24 years	25 a 29 years
Black women	2.366	577	(2)	269	281
White women	2.968	720	(2)	373	319
Black men	3.082	853	(2)	396	401
White men	3.357	770	(2)	356	377
Total¹	11.834	2.941	152	1.400	1.389

São Paulo Metropolitan Region, 3rd Quarter 2023 (In 1,000 people)

Sex and color/race	Total population aged 14 and over	Young people aged 14 to 29	14 a 17 years	18 a 24 years	25 a 29 years
Black women	2.325	630	(2)	333	271
White women	2.970	718	(2)	319	363
Black men	2.780	797	(2)	394	384
White men	3.450	901	(2)	413	465
Total¹	11.569	3.051	(2)	1.461	1.486

São Paulo Metropolitan Region, 3rd Quarter 2021 (In 1,000 people)

Sex and color/race	Total population aged 14 and over	Young people aged 14 to 29	14 a 17 years	18 a 24 years	25 a 29 years
Black women	2.013	611	(2)	309	282
White women	2.820	686	(2)	313	358
Black men	2.446	698	(2)	333	337
White men	3.270	802	(2)	375	416
Total¹	10.592	2.815	(2)	1.339	1.402

São Paulo Metropolitan Region, 3rd Quarter 2016 (In 1,000 people)

Sex and color/race	Total population aged 14 and over	Young people aged 14 to 29	14 a 17 years	18 a 24 years	25 a 29 years
Black women	1.618	453	(2)	226	203
White women	2.951	768	(2)	330	406
Black men	2.206	655	(2)	311	303
White men	3.498	877	(2)	378	477
Total¹	10.297	2.761	119	1.247	1.395

Source: IBGE. Continuous Quarterly PNAAD

Note: (1) The total includes people of unknown color/race and indigenous people.

(2) The sample does not include a breakdown for this category (maximum CV of 15.0%) Note: a) Black people= black and brown; White people= white and yellow

Estimated employed population, by age group, sex and color/race

Municipality of São Paulo, 3rd Quarter 2024 (In 1,000 people)

Sex and color/race	Total population aged 14 and over	Young people aged 14 to 29	14 a 17 years	18 a 24 years	25 a 29 years
Black women	1.334	328	(2)	163	153
White women	1.836	418	(2)	212	193
Black men	1.618	444	(2)	200	216
White men	2.042	477	(2)	213	238
Total¹	6.874	1.683	(2)	791	809

Municipality of São Paulo, 3rd Quarter 2023 (In 1,000 people)

Sex and color/race	Total population aged 14 and over	Young people aged 14 to 29	14 a 17 years	18 a 24 years	25 a 29 years
Black women	1.302	351	(2)	189	146
White women	1.820	428	(2)	186	220
Black men	1.478	435	(2)	205	220
White men	2.016	505	(2)	229	258
Total¹	6.644	1.722	(2)	810	848

Municipality of São Paulo, 3rd Quarter 2021 (In 1,000 people)

Sex and color/race	Total population aged 14 and over	Young people aged 14 to 29	14 a 17 years	18 a 24 years	25 a 29 years
Black women	1.064	303	(2)	148	149
White women	1.742	402	(2)	162	237
Black men	1.244	339	(2)	132	192
White men	2.004	484	(2)	213	266
Total¹	6.074	1.535	(2)	655	849

Municipality of São Paulo, 3rd Quarter 2016 (In 1,000 people)

Sex and color/race	Total population aged 14 and over	Young people aged 14 to 29	14 a 17 years	18 a 24 years	25 a 29 years
Black women	895	264	(2)	130	117
White women	1.823	464	(2)	198	244
Black men	1.153	349	(2)	170	163
White men	2.129	545	(2)	231	300
Total¹	6.019	1.630	(2)	731	830

Source: IBGE. Continuous Quarterly PNAD

Note: (1) The total includes people of unknown color/race and indigenous people.

(2) The sample does not include a breakdown for this category (maximum CV of 15.0%) Note: a) Black people= black and brown; white people= white and yellow

Estimated distribution of the employed by occupational position, by age group, sex and color/race

Brazil, 3rd Quarter 2024 (In %)

Position in occupation	Total population ages 14 and over	Young people aged 14 to 29				
		Total(1)	Black Women	White Women	Black Men	White Men
Employed in the private sector with signed work permit	37,8	46,6	44,0	50,1	44,5	50,2
Employed in the private sector without signed work permit	13,9	22,9	19,5	18,7	27,8	22,1
Domestic worker with a signed work card	1,3	0,4	1,0	(2)	(2)	(2)
Domestic worker without a work card signed	4,4	2,6	7,5	3,4	(2)	(2)
Employed in the public sector with signed work card	1,5	1,2	1,5	2,0	(2)	(2)
Employed in the public sector without signed work card	3,3	4,0	6,9	5,3	2,5	2,4
Military and civil servants	7,6	2,5	2,0	3,0	2,3	3,0
Employer	4,2	1,3	(2)	1,1	1,3	2,1
Self-employed	24,6	16,4	14,2	14,3	18,2	17,4
Auxiliary family worker	1,3	2,1	2,8	1,6	2,2	1,7
Total¹	100,0	100,0	100,0	100,0	100,0	100,0

Brazil, 3rd Quarter 2023 (In %)

Position in occupation	Total population ages 14 and over	Young people aged 14 to 29				
		Total(1)	Black Women	White Women	Black Men	White Men
Employed in the private sector with signed work permit	37,4	46,2	44,0	49,8	43,2	50,3
Employed in the private sector without signed work permit	13,3	22,3	19,8	17,2	28,3	20,1
Domestic worker with a signed work card	1,4	0,4	1,1	(2)	(2)	(2)
Domestic worker without a work card signed	4,4	2,6	7,2	3,5	(2)	(2)
Employed in the public sector with signed work card	1,4	0,9	1,5	1,5	(2)	(2)
Employed in the public sector without signed work card	3,1	3,8	5,6	5,4	2,5	2,5
Military and civil servants	7,7	2,4	2,1	2,8	2,4	2,4
Employer	4,2	1,6	0,8	1,6	1,5	2,5
Self-employed	25,5	17,4	15,2	15,8	18,7	19,0
Auxiliary family worker	1,5	2,3	2,8	1,9	2,4	2,2
Total¹	100,0	100,0	100,0	100,0	100,0	100,0

Source: IBGE. Continuous Quarterly PNAD

Note: (1) The total includes people of unknown color/race and indigenous people.

(2) The sample does not include a breakdown for this category (maximum CV of 15.0%) Note: a) Black people= black and brown; white people= white and yellow

Estimated distribution of the employed by occupational position, by age group, sex and color/race

Brazil, 3rd Quarter 2021 (In %)

Position in occupation	Total population ages 14 and over	Young people aged 14 to 29				
		Total(1)	Black Women	White Women	Black Men	White Men
Employed in the private sector with signed work permit	36,0	44,1	41,4	49,5	39,7	49,2
Employed in the private sector without signed work permit	12,6	21,4	17,6	14,9	28,4	19,8
Domestic worker with a signed work card	1,4	0,5	1,2	(2)	(2)	(2)
Domestic worker without a work card signed	4,4	2,9	8,7	4,0	0,4	(2)
Employed in the public sector with signed work card	1,3	0,8	1,0	1,5	(2)	(2)
Employed in the public sector without signed work card	2,4	2,9	4,2	4,3	2,0	1,7
Military and civil servants	8,3	2,5	2,1	2,6	2,5	2,8
Employer	4,1	1,6	0,9	1,4	1,5	2,6
Self-employed	27,4	19,6	18,9	17,5	20,8	19,9
Auxiliary family worker	2,1	3,7	3,9	3,5	4,1	3,0
Total¹	100,0	100,0	100,0	100,0	100,0	100,0

Brazil, 3rd Quarter 2016 (In %)

Position in occupation	Total population ages 14 and over	Young people aged 14 to 29				
		Total(1)	Black Women	White Women	Black Men	White Men
Employed in the private sector with signed work permit	38,9	48,9	43,8	55,6	44,6	53,6
Employed in the private sector without signed work permit	11,6	19,0	15,4	13,4	25,4	18,2
Domestic worker with a signed work card	2,2	0,8	2,3	1,0	(2)	(2)
Domestic worker without a work card signed	4,4	3,2	10,1	4,1	0,4	(2)
Employed in the public sector with signed work card	1,2	0,9	0,9	1,4	0,7	0,8
Employed in the public sector without signed work card	2,5	3,0	5,1	4,1	1,9	2,0
Military and civil servants	8,6	3,8	3,3	4,6	3,3	4,2
Employer	4,5	1,7	1,0	1,6	1,3	2,9
Self-employed	23,8	15,0	13,6	11,4	18,0	15,2
Auxiliary family worker	2,2	3,6	4,5	2,9	4,1	2,8
Total¹	100,0	100,0	100,0	100,0	100,0	100,0

Source: IBGE. Continuous Quarterly PNAD

Note: (1) The total includes people of unknown color/race and indigenous people.

(2) The sample does not include a breakdown for this category (maximum CV of 15.0%) Note: a) Black people= black and brown; white people= white and yellow

Estimated distribution of the employed by occupational position, by age group, sex and color/race

State of São Paulo, 3rd Quarter 2024 (In %)

Position in occupation	Total population ages 14 and over	Young people aged 14 to 29				
		Total(1)	Black Women	White Women	Black Men	White Men
Employed in the private sector with signed work permit	47,6	58,3	62,2	55,5	57,6	59,0
Employed in the private sector without signed work permit	11,2	18,2	13,3	19,8	19,9	18,5
Domestic worker with a signed work card	1,6	(2)	(2)	(2)	(2)	(2)
Domestic worker without a work card signed	3,9	1,6	(2)	(2)	(2)	(2)
Employed in the public sector with signed work card	1,5	(2)	(2)	(2)	(2)	(2)
Employed in the public sector without signed work card	0,9	1,6	(2)	(2)	(2)	(2)
Military and civil servants	6,0	2,1	(2)	(2)	(2)	(2)
Employer	3,8	(2)	(2)	(2)	(2)	(2)
Self-employed	23,0	15,2	11,2	13,6	18,5	15,4
Auxiliary family worker	0,5	(2)	(2)	(2)	(2)	(2)
Total¹	100,0	100,0	100,0	100,0	100,0	100,0

State of São Paulo, 3rd Quarter 2023 (In %)

Position in occupation	Total population ages 14 and over	Young people aged 14 to 29				
		Total(1)	Black Women	White Women	Black Men	White Men
Employed in the private sector with signed work permit	46,1	57,3	59,9	56,0	56,9	57,0
Employed in the private sector without signed work permit	11,2	18,7	17,8	17,4	20,4	18,9
Domestic worker with a signed work card	1,7	(2)	(2)	(2)	(2)	(2)
Domestic worker without a work card signed	4,3	1,7	(2)	(2)	(2)	(2)
Employed in the public sector with signed work card	1,6	(2)	(2)	(2)	(2)	(2)
Employed in the public sector without signed work card	0,8	(2)	(2)	(2)	(2)	(2)
Military and civil servants	6,1	1,8	(2)	(2)	(2)	(2)
Employer	4,1	(2)	(2)	(2)	(2)	(2)
Self-employed	23,8	16,1	11,3	15,6	18,6	17,6
Auxiliary family worker	0,4	(2)	(2)	(2)	(2)	(2)
Total¹	100,0	100,0	100,0	100,0	100,0	100,0

Source: IBGE. Continuous Quarterly PNAD

Note: (1) The total includes people of unknown color/race and indigenous people.

(2) The sample does not include a breakdown for this category (maximum CV of 15.0%) Note: a) Black people= black and brown; white people= white and yellow

Estimated distribution of the employed by occupational position, by age group, sex and color/race

State of São Paulo, 3rd Quarter 2021 (In %)

Position in occupation	Total population ages 14 and over	Young people aged 14 to 29				
		Total(1)	Black Women	White Women	Black Men	White Men
Employed in the private sector with signed work permit	46,8	56,9	56,7	57,2	54,7	58,7
Employed in the private sector without signed work permit	10,4	18,1	17,4	14,7	21,9	18,2
Domestic worker with a signed work card	1,7	(2)	(2)	(2)	(2)	(2)
Domestic worker without a work card signed	4,1	2,0	(2)	(2)	(2)	(2)
Employed in the public sector with signed work card	1,6	(2)	(2)	(2)	(2)	(2)
Employed in the public sector without signed work card	(2)	(2)	(2)	(2)	(2)	(2)
Military and civil servants	6,3	1,8	(2)	(2)	(2)	(2)
Employer	4,5	(2)	(2)	(2)	(2)	(2)
Self-employed	23,4	15,7	12,7	15,1	18,0	16,2
Auxiliary family worker	0,7	(2)	(2)	(2)	(2)	(2)
Total¹	100,0	100,0	100,0	100,0	100,0	100,0

State of São Paulo, 3rd Quarter 2016 (In %)

Position in occupation	Total population ages 14 and over	Young people aged 14 to 29				
		Total(1)	Black Women	White Women	Black Men	White Men
Employed in the private sector with signed work permit	50,2	63,8	63,7	63,8	61,7	65,1
Employed in the private sector without signed work permit	8,9	15,3	13,0	13,2	19,7	15,1
Domestic worker with a signed work card	2,9	(2)	(2)	(2)	(2)	(2)
Domestic worker without a work card signed	3,8	1,8	(2)	(2)	(2)	(2)
Employed in the public sector with signed work card	1,4	(2)	(2)	(2)	(2)	(2)
Employed in the public sector without signed work card	0,7	(2)	(2)	(2)	(2)	(2)
Military and civil servants	7,3	(2)	(2)	(2)	(2)	(2)
Employer	5,4	(2)	(2)	(2)	(2)	(2)
Self-employed	18,7	10,6	9,2	10,2	12,0	10,6
Auxiliary family worker	0,7	(2)	(2)	(2)	(2)	(2)
Total¹	100,0	100,0	100,0	100,0	100,0	100,0

Source: IBGE. Continuous Quarterly PNAD

Note: (1) The total includes people of unknown color/race and indigenous people.

(2) The sample does not include a breakdown for this category (maximum CV of 15.0%) Note: a) Black people= black and brown; white people= white and yellow

Estimated distribution of the employed by occupational position, by age group, sex and color/race

São Paulo Metropolitan Region, 3rd Quarter 2024 (In %)

Position in occupation	Total population ages 14 and over	Young people aged 14 to 29				
		Total(1)	Black Women	White Women	Black Men	White Men
Employed in the private sector with signed work permit	47,5	57,7	(2)	(2)	(2)	(2)
Employed in the private sector without signed work permit	11,9	19,5	(2)	(2)	(2)	(2)
Domestic worker with a signed work card	1,7	(2)	(2)	(2)	(2)	(2)
Domestic worker without a work card signed	3,6	(2)	(2)	(2)	(2)	(2)
Employed in the public sector with signed work card	1,1	(2)	(2)	(2)	(2)	(2)
Employed in the public sector without signed work card	(2)	(2)	(2)	(2)	(2)	(2)
Military and civil servants	5,2	(2)	(2)	(2)	(2)	(2)
Employer	4,0	(2)	(2)	(2)	(2)	(2)
Self-employed	24,0	16,1	(2)	(2)	(2)	(2)
Auxiliary family worker	(2)	(2)	(2)	(2)	(2)	(2)
Total¹	100,0	100,0	100,0	100,0	100,0	100,0

São Paulo Metropolitan Region, 3rd Quarter 2023 (In %)

Position in occupation	Total population ages 14 and over	Young people aged 14 to 29				
		Total(1)	Black Women	White Women	Black Men	White Men
Employed in the private sector with signed work permit	45,5	56,8	(2)	(2)	(2)	(2)
Employed in the private sector without signed work permit	12,0	20,0	(2)	(2)	(2)	(2)
Domestic worker with a signed work card	1,5	(2)	(2)	(2)	(2)	(2)
Domestic worker without a work card signed	3,9	(2)	(2)	(2)	(2)	(2)
Employed in the public sector with signed work card	1,0	(2)	(2)	(2)	(2)	(2)
Employed in the public sector without signed work card	(2)	(2)	(2)	(2)	(2)	(2)
Military and civil servants	5,2	(2)	(2)	(2)	(2)	(2)
Employer	4,3	(2)	(2)	(2)	(2)	(2)
Self-employed	25,5	17,5	(2)	(2)	(2)	(2)
Auxiliary family worker	(2)	(2)	(2)	(2)	(2)	(2)
Total¹	100,0	100,0	100,0	100,0	100,0	100,0

Source: IBGE. Continuous Quarterly PNAD

Note: (1) The total includes people of unknown color/race and indigenous people.

(2) The sample does not include a breakdown for this category (maximum CV of 15.0%) Note: a) Black people= black and brown; white people= white and yellow

Estimated distribution of the employed by occupational position, by age group, sex and color/race

São Paulo Metropolitan Region, 3rd Quarter 2021 (In %)

Position in occupation	Total population ages 14 and over	Young people aged 14 to 29				
		Total(1)	Black Women	White Women	Black Men	White Men
Employed in the private sector with signed work permit	48,6	57,7	(2)	(2)	(2)	(2)
Employed in the private sector without signed work permit	10,2	18,5	(2)	(2)	(2)	(2)
Domestic worker with a signed work card	1,6	(2)	(2)	(2)	(2)	(2)
Domestic worker without a work card signed	3,2	(2)	(2)	(2)	(2)	(2)
Employed in the public sector with signed work card	1,3	(2)	(2)	(2)	(2)	(2)
Employed in the public sector without signed work card	(2)	(2)	(2)	(2)	(2)	(2)
Military and civil servants	5,5	(2)	(2)	(2)	(2)	(2)
Employer	4,4	(2)	(2)	(2)	(2)	(2)
Self-employed	23,9	16,4	(2)	(2)	(2)	(2)
Auxiliary family worker	(2)	(2)	(2)	(2)	(2)	(2)
Total¹	100,0	100,0	100,0	100,0	100,0	100,0

São Paulo Metropolitan Region, 3rd Quarter 2016 (In %)

Position in occupation	Total population ages 14 and over	Young people aged 14 to 29				
		Total(1)	Black Women	White Women	Black Men	White Men
Employed in the private sector with signed work permit	51,4	65,7	(2)	(2)	(2)	(2)
Employed in the private sector without signed work permit	9,1	16,1	(2)	(2)	(2)	(2)
Domestic worker with a signed work card	2,5	(2)	(2)	(2)	(2)	(2)
Domestic worker without a work card signed	3,4	(2)	(2)	(2)	(2)	(2)
Employed in the public sector with signed work card	1,0	(2)	(2)	(2)	(2)	(2)
Employed in the public sector without signed work card	(2)	(2)	(2)	(2)	(2)	(2)
Military and civil servants	6,9	(2)	(2)	(2)	(2)	(2)
Employer	5,6	(2)	(2)	(2)	(2)	(2)
Self-employed	19,3	9,7	(2)	(2)	(2)	(2)
Auxiliary family worker	(2)	(2)	(2)	(2)	(2)	(2)
Total¹	100,0	100,0	100,0	100,0	100,0	100,0

Source: IBGE. Continuous Quarterly PNAD

Note: (1) The total includes people of unknown color/race and indigenous people.

(2) The sample does not include a breakdown for this category (maximum CV of 15.0%) Note: a) Black people= black and brown; white people= white and yellow

Estimated distribution of the employed by occupational position, by age group, sex and color/race

Municipality of São Paulo, 3rd Quarter 2024 (In %)

Position in occupation	Total population ages 14 and over	Young people aged 14 to 29				
		Total(1)	Black Women	White Women	Black Men	White Men
Employed in the private sector with signed work permit	46,1	56,6	(2)	(2)	(2)	(2)
Employed in the private sector without signed work permit	12,1	20,1	(2)	(2)	(2)	(2)
Domestic worker with a signed work card	(2)	(2)	(2)	(2)	(2)	(2)
Domestic worker without a work card signed	3,2	(2)	(2)	(2)	(2)	(2)
Employed in the public sector with signed work card	(2)	(2)	(2)	(2)	(2)	(2)
Employed in the public sector without signed work card	(2)	(2)	(2)	(2)	(2)	(2)
Military and civil servants	4,9	(2)	(2)	(2)	(2)	(2)
Employer	4,2	(2)	(2)	(2)	(2)	(2)
Self-employed	25,5	17,4	(2)	(2)	(2)	(2)
Auxiliary family worker	(2)	(2)	(2)	(2)	(2)	(2)
Total¹	100,0	100,0	100,0	100,0	100,0	100,0

Municipality of São Paulo, 3rd Quarter 2023 (In %)

Position in occupation	Total population ages 14 and over	Young people aged 14 to 29				
		Total(1)	Black Women	White Women	Black Men	White Men
Employed in the private sector with signed work permit	43,7	54,2	(2)	(2)	(2)	(2)
Employed in the private sector without signed work permit	12,7	21,7	(2)	(2)	(2)	(2)
Domestic worker with a signed work card	1,9	(2)	(2)	(2)	(2)	(2)
Domestic worker without a work card signed	3,8	(2)	(2)	(2)	(2)	(2)
Employed in the public sector with signed work card	(2)	(2)	(2)	(2)	(2)	(2)
Employed in the public sector without signed work card	(2)	(2)	(2)	(2)	(2)	(2)
Military and civil servants	5,2	(2)	(2)	(2)	(2)	(2)
Employer	4,5	(2)	(2)	(2)	(2)	(2)
Self-employed	26,1	17,7	(2)	(2)	(2)	(2)
Auxiliary family worker	(2)	(2)	(2)	(2)	(2)	(2)
Total¹	100,0	100,0	100,0	100,0	100,0	100,0

Source: IBGE. Continuous Quarterly PNAD

Note: (1) The total includes people of unknown color/race and indigenous people.

(2) The sample does not include a breakdown for this category (maximum CV of 15.0%) Note: a) Black people= black and brown; white people= white and yellow

Estimated distribution of the employed by occupational position, by age group, sex and color/race

Municipality of São Paulo, 3rd Quarter 2021 (In %)

Position in occupation	Total population ages 14 and over	Young people aged 14 to 29				
		Total(1)	Black Women	White Women	Black Men	White Men
Employed in the private sector with signed work permit	46,5	55,1	(2)	(2)	(2)	(2)
Employed in the private sector without signed work permit	10,0	17,7	(2)	(2)	(2)	(2)
Domestic worker with a signed work card	1,6	(2)	(2)	(2)	(2)	(2)
Domestic worker without a work card signed	2,7	(2)	(2)	(2)	(2)	(2)
Employed in the public sector with signed work card	(2)	(2)	(2)	(2)	(2)	(2)
Employed in the public sector without signed work card	(2)	(2)	(2)	(2)	(2)	(2)
Military and civil servants	5,4	(2)	(2)	(2)	(2)	(2)
Employer	5,1	(2)	(2)	(2)	(2)	(2)
Self-employed	26,1	20,4	(2)	(2)	(2)	(2)
Auxiliary family worker	(2)	(2)	(2)	(2)	(2)	(2)
Total¹	100,0	100,0	100,0	100,0	100,0	100,0

Municipality of São Paulo, 3rd Quarter 2016 (In %)

Position in occupation	Total population ages 14 and over	Young people aged 14 to 29				
		Total(1)	Black Women	White Women	Black Men	White Men
Employed in the private sector with signed work permit	50,6	65,3	(2)	(2)	(2)	(2)
Employed in the private sector without signed work permit	9,3	15,8	(2)	(2)	(2)	(2)
Domestic worker with a signed work card	2,2	(2)	(2)	(2)	(2)	(2)
Domestic worker without a work card signed	3,2	(2)	(2)	(2)	(2)	(2)
Employed in the public sector with signed work card	(2)	(2)	(2)	(2)	(2)	(2)
Employed in the public sector without signed work card	(2)	(2)	(2)	(2)	(2)	(2)
Military and civil servants	6,2	(2)	(2)	(2)	(2)	(2)
Employer	6,3	(2)	(2)	(2)	(2)	(2)
Self-employed	20,7	10,5	(2)	(2)	(2)	(2)
Auxiliary family worker	(2)	(2)	(2)	(2)	(2)	(2)
Total¹	100,0	100,0	100,0	100,0	100,0	100,0

Source: IBGE. Continuous Quarterly PNAD

Note: (1) The total includes people of unknown color/race and indigenous people.

(2) The sample does not include a breakdown for this category (maximum CV of 15.0%) Note: a) Black people= black and brown; white people= white and yellow

Estimated informality rate, by age group, sex and color/race

Brazil, 3rd Quarter 2024 (In %)

Sex and color/race	Total population aged 14 and over	Young people aged 14 to 29	14 to 17 years	18 to 24 years	25 to 29 years
Black women	39,4	40,8	71,8	42,2	36,4
White women	29,5	32,4	61,5	34,4	27,2
Black men	41,1	45,3	81,4	45,8	40,1
White men	30,4	35,1	70,2	37,7	28,6
Total¹	35,9	39,7	73,6	41,1	34,3

Brasil, 3º Trimestre de 2023 (Em %)

Sex and color/race	Total population aged 14 and over	Young people aged 14 to 29	14 to 17 years	18 to 24 years	25 to 29 years
Black women	40,4	41,8	77,9	42,2	38,2
White women	29,7	32,8	63,7	33,8	28,7
Black men	42,1	46,9	83,6	48,0	41,1
White men	30,4	35,1	71,0	36,5	30,0
Total¹	36,3	40,4	76,0	41,5	35,5

Brasil, 3º Trimestre de 2021 (Em %)

Sex and color/race	Total population aged 14 and over	Young people aged 14 to 29	14 to 17 years	18 to 24 years	25 to 29 years
Black women	43,0	46,1	82,7	47,8	40,9
White women	31,4	34,6	72,6	37,0	29,1
Black men	45,7	51,2	88,6	52,9	44,1
White men	32,7	37,5	79,6	38,0	32,7
Total¹	38,9	43,7	83,0	45,4	37,7

Brasil, 3º Trimestre de 2016 (Em %)

Sex and color/race	Total population aged 14 and over	Young people aged 14 to 29	14 to 17 years	18 to 24 years	25 to 29 years
Black women	41,2	41,8	76,2	43,3	36,2
White women	27,6	28,2	64,8	32,4	21,0
Black men	43,6	46,2	84,5	47,1	39,0
White men	28,5	32,4	72,6	35,1	24,9
Total¹	35,8	38,2	76,9	40,5	31,0

Source: IBGE. Continuous Quarterly PNAD

Note: (1) The total includes people of unknown color/race and indigenous people.

Note: a) Black people= black and brown; white people= white and yellow

b) Employees in the private sector without a signed work permit, domestic workers without a signed work permit, employees and self-employed workers without social security contributions, and auxiliary family workers were considered informal.

Estimated informality rate, by age group, sex and color/race

State of São Paulo, 3rd Quarter 2024 (In %)

Sex and color/race	Total population aged 14 and over	Young people aged 14 to 29	14 to 17 years	18 to 24 years	25 to 29 years
Black women	31,1	26,1	(2)	24,4	25,9
White women	28,3	30,7	70,1	31,1	26,3
Black men	31,1	35,2	76,0	32,5	31,9
White men	27,5	29,8	64,9	32,1	24,2
Total¹	29,3	31,0	66,3	30,6	27,3

State of São Paulo, 3rd Quarter 2023 (In %)

Sex and color/race	Total population aged 14 and over	Young people aged 14 to 29	14 to 17 years	18 to 24 years	25 to 29 years
Black women	34,4	29,9	(2)	27,4	28,7
White women	28,3	30,8	51,7	30,1	29,3
Black men	32,9	36,4	82,5	36,2	33,0
White men	27,6	31,3	68,4	33,1	26,6
Total¹	30,3	32,2	66,6	31,9	29,3

State of São Paulo, 3rd Quarter 2021 (In %)

Sex and color/race	Total population aged 14 and over	Young people aged 14 to 29	14 to 17 years	18 to 24 years	25 to 29 years
Black women	33,9	34,9	(2)	37,3	29,5
White women	29,2	31,7	80,3	32,8	27,5
Black men	33,2	37,6	79,9	38,1	33,2
White men	28,3	30,8	72,3	30,1	28,3
Total¹	30,6	33,5	76,1	34,3	29,5

State of São Paulo, 3rd Quarter 2016 (In %)

Sex and color/race	Total population aged 14 and over	Young people aged 14 to 29	14 to 17 years	18 to 24 years	25 to 29 years
Black women	30,4	26,6	59,2	24,5	25,3
White women	24,4	23,9	62,1	29,3	16,5
Black men	28,6	31,2	72,4	31,4	25,4
White men	22,1	23,6	59,1	27,0	18,0
Total¹	25,3	25,9	63,9	28,2	20,0

Source: IBGE. Continuous Quarterly PNAD

Note: (1) The total includes people of unknown color/race and indigenous people.

Note: a) Black people= black and brown; white people= white and yellow

b) Employees in the private sector without a signed work permit, domestic workers without a signed work permit, employees and self-employed workers without social security contributions, and auxiliary family workers were considered informal.

Estimated informality rate, by age group, sex and color/race

São Paulo Metropolitan Region, 3rd Quarter 2024 (In %)

Sex and color/race	Total population aged 14 and over	Young people aged 14 to 29	14 to 17 years	18 to 24 years	25 to 29 years
Black women	32,7	29,5	53,2	29,0	(2)
White women	29,5	32,2	78,9	34,8	(2)
Black men	33,3	37,7	(2)	36,4	31,7
White men	29,7	34,0	(2)	33,3	31,0
Total¹	31,3	34,0	76,9	33,9	29,4

São Paulo Metropolitan Region, 3rd Quarter 2023 (In %)

Sex and color/race	Total population aged 14 and over	Young people aged 14 to 29	14 to 17 years	18 to 24 years	25 to 29 years
Black women	36,6	34,6	85,8	32,5	(2)
White women	29,5	31,6	46,5	29,5	(2)
Black men	35,1	39,1	(2)	40,1	35,5
White men	30,2	32,4	(2)	35,2	27,5
Total¹	32,6	34,4	71,5	34,6	31,6

São Paulo Metropolitan Region, 3rd Quarter 2021 (In %)

Sex and color/race	Total population aged 14 and over	Young people aged 14 to 29	14 to 17 years	18 to 24 years	25 to 29 years
Black women	31,7	35,0	93,2	39,4	(2)
White women	28,0	31,4	87,8	33,8	(2)
Black men	32,0	37,9	(2)	42,2	30,9
White men	29,4	30,9	(2)	29,5	31,1
Total¹	30,1	33,7	81,3	36,0	29,0

São Paulo Metropolitan Region, 3rd Quarter 2016 (In %)

Sex and color/race	Total population aged 14 and over	Young people aged 14 to 29	14 to 17 years	18 to 24 years	25 to 29 years
Black women	31,1	28,3	(2)	23,9	28,5
White women	24,6	25,6	74,0	29,1	19,0
Black men	28,4	30,6	66,0	33,6	22,6
White men	22,2	21,0	(2)	24,0	17,7
Total¹	25,6	25,7	63,8	27,7	20,6

Source: IBGE. Continuous Quarterly PNAD

Note: (1) The total includes people of unknown color/race and indigenous people.

Note: a) Black people= black and brown; white people= white and yellow

b) Employees in the private sector without a signed work permit, domestic workers without a signed work permit, employees and self-employed workers without social security contributions, and auxiliary family workers were considered informal.

Estimated informality rate, by age group, sex and color/race

Municipality of São Paulo, 3rd Quarter 2024 (In %)

Sex and color/race	Total population aged 14 and over	Young people aged 14 to 29	14 to 17 years	18 to 24 years	25 to 29 years
Black women	33,0	29,1	(2)	32,0	(2)
White women	28,5	31,5	(2)	(2)	(2)
Black men	35,8	40,7	(2)	42,1	(2)
White men	29,5	33,3	(2)	35,5	28,0
Total¹	31,5	34,4	(2)	36,6	28,6

Municipality of São Paulo, 3rd Quarter 2023 (In %)

Sex and color/race	Total population aged 14 and over	Young people aged 14 to 29	14 to 17 years	18 to 24 years	25 to 29 years
Black women	37,0	36,9	(2)	39,9	(2)
White women	29,9	31,2	(2)	(2)	(2)
Black men	34,6	40,1	(2)	45,8	(2)
White men	29,3	33,8	(2)	39,0	26,6
Total¹	32,3	35,4	(2)	38,2	30,5

Municipality of São Paulo, 3rd Quarter 2021 (In %)

Sex and color/race	Total population aged 14 and over	Young people aged 14 to 29	14 to 17 years	18 to 24 years	25 to 29 years
Black women	30,5	35,6	(2)	39,9	(2)
White women	27,7	31,4	(2)	(2)	(2)
Black men	32,5	38,3	(2)	48,0	(2)
White men	32,0	35,2	(2)	33,6	36,4
Total¹	30,6	35,0	(2)	38,6	31,0

Municipality of São Paulo, 3rd Quarter 2016 (In %)

Sex and color/race	Total population aged 14 and over	Young people aged 14 to 29	14 to 17 years	18 to 24 years	25 to 29 years
Black women	32,4	31,7	(2)	(2)	(2)
White women	24,5	25,2	85,4	(2)	(2)
Black men	28,1	31,0	(2)	33,5	(2)
White men	23,0	19,8	(2)	(2)	(2)
Total¹	25,9	25,6	66,2	27,6	20,4

Source: IBGE. Continuous Quarterly PNAD

Note: (1) The total includes people of unknown color/race and indigenous people.

Note: a) Black people= black and brown; white people= white and yellow

b) Employees in the private sector without a signed work permit, domestic workers without a signed work permit, employees and self-employed workers without social security contributions, and auxiliary family workers were considered informal.

Estimated proportion of self-employed workers without a CNPJ in the main occupation, by age group, sex and color/race

Brazil, 3rd Quarter 2024 (In %)

Sex and color/race	Total population aged 14 and over	Young people aged 14 to 29	14 to 17 years	18 to 24 years	25 to 29 years
Black women	79,0	81,7	99,0	86,0	77,9
White women	65,2	69,1	100,0	73,0	64,9
Black men	81,6	85,6	97,3	88,2	83,1
White men	67,5	72,5	96,4	80,4	65,9
Total¹	74,6	79,1	97,9	83,6	75,0

Brazil, 3rd Quarter 2023 (In %)

Sex and color/race	Total population aged 14 and over	Young people aged 14 to 29	14 to 17 years	18 to 24 years	25 to 29 years
Black women	80,0	82,0	89,3	83,0	80,9
White women	65,1	69,7	96,7	75,0	64,8
Black men	82,9	85,4	97,0	88,5	82,2
White men	67,3	71,3	80,2	75,9	68,0
Total¹	75,0	78,5	92,1	82,0	75,3

Brazil, 3rd Quarter 2021 (In %)

Sex and color/race	Total population aged 14 and over	Young people aged 14 to 29	14 to 17 years	18 to 24 years	25 to 29 years
Black women	79,8	83,6	99,2	90,3	77,9
White women	65,9	70,7	95,2	76,4	65,7
Black men	83,3	85,3	94,2	90,0	80,7
White men	68,2	72,6	93,2	76,5	68,7
Total¹	75,6	79,5	95,2	84,8	74,6

Brazil, 3rd Quarter 2016 (In %)

Sex and color/race	Total population aged 14 and over	Young people aged 14 to 29	14 to 17 years	18 to 24 years	25 to 29 years
Black women	86,3	87,6	99,0	90,5	84,6
White women	71,6	74,1	91,2	82,8	66,5
Black men	88,8	92,3	96,0	94,4	90,2
White men	72,8	80,2	83,6	85,6	75,8
Total¹	81,1	85,5	92,6	89,8	81,6

Source: IBGE. Continuous Quarterly Pnad

Note: (1) The total includes people of unknown color/race and indigenous people.

Note: a) Black people= black and brown; white people= white and yellow

Estimated proportion of self-employed workers without a CNPJ in the main occupation, by age group, sex and color/race

State of São Paulo, 3rd Quarter 2024 (In %)

Sex and color/race	Total population aged 14 and over	Young people aged 14 to 29	14 to 17 years	18 to 24 years	25 to 29 years
Black women	67,8	68,9	(2)	75,2	62,8
White women	59,6	63,3	(2)	65,1	60,4
Black men	70,2	75,1	(2)	80,1	70,2
White men	59,0	68,2	(2)	75,3	60,9
Total¹	63,6	69,8	98,9	74,7	64,5

State of São Paulo, 3rd Quarter 2023 (In %)

Sex and color/race	Total population aged 14 and over	Young people aged 14 to 29	14 to 17 years	18 to 24 years	25 to 29 years
Black women Negras	70,6	72,0	(2)	70,1	74,2
White women Branças	58,0	62,6	(2)	66,2	58,0
Black men Negros	72,4	78,5	(2)	76,8	77,9
White men Branços	56,8	61,0	(2)	68,6	57,7
Total¹	63,2	68,1	77,8	70,4	65,7

State of São Paulo, 3rd Quarter 2021 (In %)

Sex and color/race	Total population aged 14 and over	Young people aged 14 to 29	14 to 17 years	18 to 24 years	25 to 29 years
Black women	70,4	79,6	(2)	92,6	69,4
White women	61,0	67,0	(2)	68,6	64,2
Black men	73,4	72,7	(2)	87,2	58,9
White men	57,6	64,2	(2)	68,3	59,6
Total¹	64,0	69,9	98,6	78,5	62,1

State of São Paulo, 3rd Quarter 2016 (In %)

Sex and color/race	Total population aged 14 and over	Young people aged 14 to 29	14 to 17 years	18 to 24 years	25 to 29 years
Black women	76,9	74,2	(2)	91,7	62,5
White women	65,7	68,0	(2)	83,2	53,1
Black men	79,7	89,7	(2)	95,5	86,3
White men	61,1	77,7	(2)	85,0	72,7
Total¹	68,3	77,7	87,0	87,9	69,9

Source: IBGE. Continuous Quarterly Pnad

Note: (1) The total includes people of unknown color/race and indigenous people.

(2) The sample does not include a breakdown for this category (maximum CV of 15.0%) Note: a) Black people= black and brown; White people= white and yellow

Estimated proportion of self-employed workers without a CNPJ in the main occupation, by age group, sex and color/race

São Paulo Metropolitan Region, 3rd Quarter 2024 (In %)

Sex and color/race	Total population aged 14 and over	Young people aged 14 to 29	14 to 17 years	18 to 24 years	25 to 29 years
Black women	76,0	76,8	(2)	87,6	(2)
White women	60,8	70,4	(2)	(2)	(2)
Black men	72,2	75,4	(2)	84,2	(2)
White men	57,9	64,1	(2)	(2)	57,4
Total¹	65,8	71,8	(2)	78,8	65,0

São Paulo Metropolitan Region, 3rd Quarter 2023 (In %)

Sex and color/race	Total population aged 14 and over	Young people aged 14 to 29	14 to 17 years	18 to 24 years	25 to 29 years
Black women	74,6	76,3	(2)	69,6	(2)
White women	57,6	63,2	(2)	(2)	(2)
Black men	75,2	83,1	(2)	81,5	(2)
White men	55,6	56,4	(2)	(2)	51,5
Total¹	64,6	69,3	(2)	71,6	67,2

São Paulo Metropolitan Region, 3rd Quarter 2021 (In %)

Sex and color/race	Total population aged 14 and over	Young people aged 14 to 29	14 to 17 years	18 to 24 years	25 to 29 years
Black women	68,0	70,5	(2)	88,2	(2)
White women	59,3	63,1	(2)	(2)	(2)
Black men	69,8	66,1	(2)	97,5	(2)
White men	55,5	63,3	(2)	(2)	62,2
Total¹	61,9	65,7	(2)	78,9	55,3

São Paulo Metropolitan Region, 3rd Quarter 2016 (In %)

Sex and color/race	Total population aged 14 and over	Young people aged 14 to 29	14 to 17 years	18 to 24 years	25 to 29 years
Black women	79,3	77,8	(2)	87,5	(2)
White women	66,5	71,4	(2)	82,3	(2)
Black men	78,2	91,9	(2)	95,0	90,9
White men	58,9	80,9	(2)	82,7	79,4
Total¹	68,2	81,8	(2)	87,7	77,4

Source: IBGE. Continuous Quarterly Pnad

Note: (1) The total includes people of unknown color/race and indigenous people.

(2) The sample does not include a breakdown for this category (maximum CV of 15.0%) Note: a) Black people= black and brown; White people= white and yellow

Estimated proportion of self-employed workers without a CNPJ in the main occupation, by age group, sex and color/race

Municipality of São Paulo, 3rd Quarter 2024 (In %)

Sex and color/race	Total population aged 14 and over	Young people aged 14 to 29	14 to 17 years	18 to 24 years	25 to 29 years
Black women	73,4	(2)	(2)	(2)	(2)
White women	56,6	57,1	(2)	(2)	(2)
Black men	70,0	(2)	(2)	82,9	(2)
White men	55,6	62,2	(2)	(2)	(2)
Total¹	62,6	66,1	(2)	77,7	55,7

Municipality of São Paulo, 3rd Quarter 2023 (In %)

Sex and color/race	Total population aged 14 and over	Young people aged 14 to 29	14 to 17 years	18 to 24 years	25 to 29 years
Black women	71,4	(2)	(2)	(2)	(2)
White women	55,5	51,8	(2)	(2)	(2)
Black men	68,6	(2)	(2)	81,4	(2)
White men	49,4	49,0	(2)	(2)	(2)
Total¹	59,2	61,8	(2)	66,9	56,3

Municipality of São Paulo, 3rd Quarter 2021 (In %)

Sex and color/race	Total population aged 14 and over	Young people aged 14 to 29	14 to 17 years	18 to 24 years	25 to 29 years
Black women	67,4	(2)	(2)	(2)	(2)
White women	57,3	62,7	(2)	(2)	(2)
Black men	67,7	(2)	(2)	95,5	(2)
White men	48,9	57,3	(2)	(2)	(2)
Total¹	57,7	61,5	(2)	69,6	56,6

Municipality of São Paulo, 3rd Quarter 2016 (In %)

Sex and color/race	Total population aged 14 and over	Young people aged 14 to 29	14 to 17 years	18 to 24 years	25 to 29 years
Black women	75,7	(2)	(2)	(2)	(2)
White women	64,4	71,1	(2)	(2)	(2)
Black men	77,0	96,7	(2)	(2)	93,4
White men	56,9	81,1	(2)	(2)	85,9
Total¹	65,4	80,9	(2)	87,3	74,7

Source: IBGE. Continuous Quarterly Pnad

Note: (1) The total includes people of unknown color/race and indigenous people.

(2) The sample does not include a breakdown for this category (maximum CV of 15.0%)

Note: a) Black people= black and brown; White people= white and yellow

Estimate of the proportion of employed people with less than 1 year in their current job, single or main, by sex, color/race and age group

Brazil, 3rd Quarter 2024 (In %)

Sex and color/race	Total population aged 14 and over	Young people aged 14 to 29	14 to 17 years	18 to 24 years	25 to 29 years
Black women	28,2	45,7	71,5	52,2	36,8
White women	22,0	41,6	70,5	48,7	31,1
Black men	25,8	42,4	66,0	48,3	32,9
White men	18,7	36,0	58,7	42,9	26,6
Total¹	23,9	41,6	66,5	48,1	32,1

Brazil, 3rd Quarter 2023 (In %)

Sex and color/race	Total population aged 14 and over	Young people aged 14 to 29	14 to 17 years	18 to 24 years	25 to 29 years
Black women	27,4	44,1	67,2	51,7	34,1
White women	21,1	38,2	68,8	45,0	28,6
Black men	25,4	41,2	61,7	47,2	32,3
White men	18,4	35,9	61,6	41,4	27,8
Total¹	23,2	40,1	64,1	46,6	30,9

Brazil, 3rd Quarter 2021 (In %)

Sex and color/race	Total population aged 14 and over	Young people aged 14 to 29	14 to 17 years	18 to 24 years	25 to 29 years
Black women	26,5	44,7	68,0	51,4	35,7
White women	20,6	40,0	65,3	48,5	29,9
Black men	24,9	41,0	61,5	47,1	31,5
White men	18,5	36,0	53,4	42,3	27,9
Total¹	22,7	40,4	61,4	47,2	31,3

Brazil, 3rd Quarter 2016 (In %)

Sex and color/race	Total population aged 14 and over	Young people aged 14 to 29	14 to 17 years	18 to 24 years	25 to 29 years
Black women	23,6	38,8	58,3	44,7	30,2
White women	17,9	33,6	60,9	41,0	24,2
Black men	23,0	36,9	51,5	41,0	30,1
White men	16,2	29,9	49,5	34,1	23,4
Total¹	20,3	34,9	53,8	40,1	27,1

Source: IBGE. Continuous Quarterly Pnad

Note: (1) The total includes people of unknown color/race and indigenous people.

(2) The sample does not include a breakdown for this category (maximum CV of 15.0%)

Note: a) Black people= black and brown; White people= white and yellow

Estimate of the proportion of employed people with less than 1 year in their current job, single or main, by sex, color/race and age group

State of São Paulo, 3rd Quarter 2024 (In %)

Sex and color/race	Total population aged 14 and over	Young people aged 14 to 29	14 to 17 years	18 to 24 years	25 to 29 years
Black women	27,2	44,6	87,7	46,8	37,7
White women	22,0	42,7	(2)	49,3	32,5
Black men	23,2	39,7	68,0	44,5	30,3
White men	18,6	37,1	59,5	45,5	26,5
Total¹	22,2	40,6	70,5	46,4	31,0

State of São Paulo, 3rd Quarter 2023 (In %)

Sex and color/race	Total population aged 14 and over	Young people aged 14 to 29	14 to 17 years	18 to 24 years	25 to 29 years
Black women	27,1	42,1	75,4	47,5	31,7
White women	21,2	36,3	(2)	41,3	27,9
Black men	23,2	39,5	69,2	46,6	29,2
White men	17,6	35,2	59,5	40,6	28,1
Total¹	21,6	37,9	68,2	43,7	28,9

State of São Paulo, 3rd Quarter 2021 (In %)

Sex and color/race	Total population aged 14 and over	Young people aged 14 to 29	14 to 17 years	18 to 24 years	25 to 29 years
Black women	27,5	47,0	88,0	51,8	38,7
White women	20,1	38,8	(2)	45,7	31,0
Black men	24,6	40,6	80,8	46,6	30,5
White men	18,6	37,5	59,0	42,9	30,5
Total¹	21,8	40,3	69,0	46,1	32,1

State of São Paulo, 3rd Quarter 2016 (In %)

Sex and color/race	Total population aged 14 and over	Young people aged 14 to 29	14 to 17 years	18 to 24 years	25 to 29 years
Black women	22,5	34,8	71,9	38,4	26,2
White women	17,3	33,1	70,3	40,8	23,5
Black men	22,0	35,8	58,5	41,4	27,0
White men	15,0	28,5	54,8	31,5	23,9
Total¹	18,2	32,4	62,1	37,6	24,7

Source: IBGE. Continuous Quarterly Pnad

Note: (1) The total includes people of unknown color/race and indigenous people.

(2) The sample does not include a breakdown for this category (maximum CV of 15.0%)

Note: a) Black people= black and brown; White people= white and yellow

Estimate of the proportion of employed people with less than 1 year in their current job, single or main, by sex, color/race and age group

São Paulo Metropolitan Region, 3rd Quarter 2024 (In %)

Sex and color/race	Total population aged 14 and over	Young people aged 14 to 29	14 to 17 years	18 to 24 years	25 to 29 years
Black women	25,5	44,6	87,9	49,8	35,4
White women	22,2	43,8	(2)	50,9	33,1
Black men	21,5	37,6	65,8	42,4	28,9
White men	17,2	34,8	(2)	43,6	23,5
Total¹	21,3	39,8	70,9	46,5	29,6

São Paulo Metropolitan Region, 3rd Quarter 2023 (In %)

Sex and color/race	Total population aged 14 and over	Young people aged 14 to 29	14 to 17 years	18 to 24 years	25 to 29 years
Black women	25,5	43,3	65,4	48,7	34,5
White women	20,7	36,0	(2)	43,9	26,1
Black men	22,6	37,8	62,2	44,7	29,5
White men	16,3	30,8	(2)	34,8	25,2
Total¹	20,8	36,4	66,3	42,6	28,2

São Paulo Metropolitan Region, 3rd Quarter 2021 (In %)

Sex and color/race	Total population aged 14 and over	Young people aged 14 to 29	14 to 17 years	18 to 24 years	25 to 29 years
Black women	27,1	44,6	82,2	50,3	35,6
White women	20,8	38,6	(2)	48,2	30,4
Black men	22,8	38,0	89,5	45,6	26,3
White men	18,4	38,6	(2)	40,6	36,0
Total¹	21,7	39,5	73,1	45,6	32,0

São Paulo Metropolitan Region, 3rd Quarter 2016 (In %)

Sex and color/race	Total population aged 14 and over	Young people aged 14 to 29	14 to 17 years	18 to 24 years	25 to 29 years
Black women	21,1	37,8	81,7	43,0	(2)
White women	15,7	31,0	75,8	36,4	23,2
Black men	19,3	33,1	(2)	39,4	23,6
White men	14,3	28,4	74,5	32,2	23,3
Total¹	16,8	31,8	69,3	37,0	23,8

Source: IBGE. Continuous Quarterly Pnad

Note: (1) The total includes people of unknown color/race and indigenous people.

(2) The sample does not include a breakdown for this category (maximum CV of 15.0%)

Note: a) Black people= black and brown; White people= white and yellow

Estimate of the proportion of employed people with less than 1 year in their current job, single or main, by sex, color/race and age group

Municipality of São Paulo, 3rd Quarter 2024 (In %)

Sex and color/race	Total population aged 14 and over	Young people aged 14 to 29	14 to 17 years	18 to 24 years	25 to 29 years
Black women	25,9	43,7	(2)	48,9	(2)
White women	21,6	42,5	(2)	51,1	31,0
Black men	22,8	41,2	(2)	46,4	(2)
White men	17,3	34,4	(2)	41,7	24,9
Total¹	21,5	40,1	70,0	46,9	30,4

Municipality of São Paulo, 3rd Quarter 2023 (In %)

Sex and color/race	Total population aged 14 and over	Young people aged 14 to 29	14 to 17 years	18 to 24 years	25 to 29 years
Black women	25,1	40,4	(2)	48,2	(2)
White women	21,4	40,0	(2)	50,6	27,4
Black men	23,2	38,5	(2)	48,4	(2)
White men	16,9	35,1	(2)	41,2	26,7
Total¹	21,1	38,2	76,6	46,8	27,0

Municipality of São Paulo, 3rd Quarter 2021 (In %)

Sex and color/race	Total population aged 14 and over	Young people aged 14 to 29	14 to 17 years	18 to 24 years	25 to 29 years
Black women	27,2	43,0	(2)	52,5	(2)
White women	20,5	40,1	(2)	53,3	30,8
Black men	22,7	33,2	(2)	47,7	(2)
White men	17,3	36,6	(2)	40,2	32,7
Total¹	21,1	38,0	83,8	47,7	28,8

Municipality of São Paulo, 3rd Quarter 2016 (In %)

Sex and color/race	Total population aged 14 and over	Young people aged 14 to 29	14 to 17 years	18 to 24 years	25 to 29 years
Black women	22,5	43,1	79,6	52,7	(2)
White women	17,0	33,9	(2)	37,0	27,2
Black men	19,4	34,0	(2)	41,3	(2)
White men	15,0	30,2	(2)	36,4	(2)
Total¹	17,6	34,1	71,8	40,5	25,3

Source: IBGE. Continuous Quarterly Pnad

Note: (1) The total includes people of unknown color/race and indigenous people.

(2) The sample does not include a breakdown for this category (maximum CV of 15.0%)

Note: a) Black people= black and brown; White people= white and yellow

Estimated usual average monthly income from all jobs of the employed population with income, by age group, sex and color/race

Brazil, 3rd Quarter 2024 (In R\$)

Sex and color/race	Total population aged 14 and over	Young people aged 14 to 29	14 to 17 years	18 to 24 years	25 to 29 years
Black women	2.173	1.727	743	1.472	2.064
White women	3.501	2.349	885	1.825	3.032
Black men	2.724	2.033	959	1.804	2.391
White men	4.690	2.769	1.215	2.106	3.565
Total¹	3.227	2.184	961	1.795	2.700

Brazil, 3rd Quarter 2023 (In R\$)

Sex and color/race	Total population aged 14 and over	Young people aged 14 to 29	14 to 17 years	18 to 24 years	25 to 29 years
Black women	2.073	1.653	748	1.450	1.933
White women	3.441	2.282	921	1.809	2.856
Black men	2.596	1.913	910	1.668	2.275
White men	4.456	2.643	1.036	2.137	3.273
Total¹	3.112	2.090	908	1.746	2.544

Brazil, 3rd Quarter 2021 (In R\$)

Sex and color/race	Total population aged 14 and over	Young people aged 14 to 29	14 to 17 years	18 to 24 years	25 to 29 years
Black women	1.925	1.518	652	1.348	1.757
White women	3.232	2.121	845	1.767	2.539
Black men	2.391	1.753	809	1.555	2.061
White men	4.158	2.451	959	1.948	3.067
Total¹	2.914	1.934	819	1.638	2.326

Brazil, 3rd Quarter 2016 (In R\$)

Sex and color/race	Total population aged 14 and over	Young people aged 14 to 29	14 to 17 years	18 to 24 years	25 to 29 years
Black women	1.850	1.509	733	1.309	1.789
White women	3.201	2.221	857	1.671	2.831
Black men	2.350	1.744	832	1.521	2.095
White men	4.321	2.477	1.015	1.931	3.140
Total¹	2.948	1.975	863	1.605	2.457

Source: IBGE. Continuous Quarterly Pnad

Note: (1) The total includes people of unknown color/race and indigenous people.

(2) The sample does not include a breakdown for this category (maximum CV of 15.0%)

Note: a) Black people= black and brown; White people= white and yellow

Estimated usual average monthly income from all jobs of the employed population with income, by age group, sex and color/race

State of São Paulo, 3rd Quarter 2024 (In R\$)

Sex and color/race	Total population aged 14 and over	Young people aged 14 to 29	14 to 17 years	18 to 24 years	25 to 29 years
Black women	2.439	2.045	845	1.747	2.478
White women	3.874	2.610	967	1.975	3.466
Black men	3.318	2.591	1.203	2.352	3.046
White men	5.459	3.159	1.728	2.239	4.217
Total¹	3.959	2.654	1.228	2.111	3.380

State of São Paulo, 3rd Quarter 2023 (In R\$)

Sex and color/race	Total population aged 14 and over	Young people aged 14 to 29	14 to 17 years	18 to 24 years	25 to 29 years
Black women	2.322	2.009	963	1.734	2.454
White women	3.889	2.531	974	2.143	3.076
Black men	2.962	2.254	1.163	2.023	2.598
White men	5.088	2.977	972	2.288	3.769
Total¹	3.772	2.496	1.014	2.068	3.073

State of São Paulo, 3rd Quarter 2021 (In R\$)

Sex and color/race	Total population aged 14 and over	Young people aged 14 to 29	14 to 17 years	18 to 24 years	25 to 29 years
Black women	2.135	1.786	744	1.611	2.054
White women	3.697	2.557	851	2.165	3.038
Black men	2.825	2.271	824	2.120	2.548
White men	4.967	2.909	1.045	2.078	3.856
Total¹	3.662	2.442	885	2.015	2.987

State of São Paulo, 3rd Quarter 2016 (In R\$)

Sex and color/race	Total population aged 14 and over	Young people aged 14 to 29	14 to 17 years	18 to 24 years	25 to 29 years
Black women	2.016	1.777	913	1.612	2.061
White women	3.768	2.527	977	1.826	3.247
Black men	2.759	2.068	1.162	1.840	2.416
White men	5.421	2.836	1.129	2.125	3.543
Total¹	3.891	2.413	1.073	1.888	3.016

Source: IBGE. Continuous Quarterly Pnad

Note: (1) The total includes people of unknown color/race and indigenous people.

(2) The sample does not include a breakdown for this category (maximum CV of 15.0%)

Note: a) Black people= black and brown; White people= white and yellow

Estimated usual average monthly income from all jobs of the employed population with income, by age group, sex and color/race

São Paulo Metropolitan Region, 3rd Quarter 2024 (In R\$)

Sex and color/race	Total population aged 14 and over	Young people aged 14 to 29	14 to 17 years	18 to 24 years	25 to 29 years
Black women	2.635	2.234	(2)	1.808	2.778
White women	4.866	3.019	(2)	2.158	4.180
Black men	3.466	2.629	(2)	2.216	3.247
White men	6.977	3.444	(2)	2.273	4.665
Total¹	4.645	2.857	(2)	2.136	3.745

São Paulo Metropolitan Region, 3rd Quarter 2023 (In R\$)

Sex and color/race	Total population aged 14 and over	Young people aged 14 to 29	14 to 17 years	18 to 24 years	25 to 29 years
Black women	2.510	2.141	(2)	1.790	2.665
White women	4.959	3.036	(2)	2.461	3.734
Black men	3.200	2.251	(2)	1.928	2.639
White men	6.583	3.730	(2)	2.572	4.852
Total¹	4.524	2.853	(2)	2.196	3.613

São Paulo Metropolitan Region, 3rd Quarter 2021 (In R\$)

Sex and color/race	Total population aged 14 and over	Young people aged 14 to 29	14 to 17 years	18 to 24 years	25 to 29 years
Black women	2.348	1.983	(2)	1.697	2.384
White women	4.718	3.098	(2)	(2)	3.658
Black men	2.952	2.461	(2)	(2)	2.960
White men	5.975	3.474	(2)	2.216	4.648
Total¹	4.242	2.802	(2)	2.149	3.519

São Paulo Metropolitan Region, 3rd Quarter 2016 (In R\$)

Sex and color/race	Total population aged 14 and over	Young people aged 14 to 29	14 to 17 years	18 to 24 years	25 to 29 years
Black women	2.171	1.851	997	1.639	2.185
White women	4.753	3.011	1.008	2.034	3.934
Black men	2.813	2.071	1.172	1.797	2.463
White men	6.680	3.305	1.118	2.247	4.240
Total¹	4.584	2.689	1.083	1.967	3.459

Source: IBGE. Continuous Quarterly Pnad

Note: (1) The total includes people of unknown color/race and indigenous people.

(2) The sample does not include a breakdown for this category (maximum CV of 15.0%)

Note: a) Black people= black and brown; White people= white and yellow

Estimated usual average monthly income from all jobs of the employed population with income, by age group, sex and color/race

Municipality of São Paulo, 3rd Quarter 2024 (In R\$)

Sex and color/race	Total population aged 14 and over	Young people aged 14 to 29	14 to 17 years	18 to 24 years	25 to 29 years
Black women	2.781	2.278	(2)	1.747	2.955
White women	5.710	3.574	(2)	2.171	5.267
Black men	3.803	2.883	(2)	2.068	3.853
White men	7.962	4.027	(2)	2.324	5.664
Total¹	5.345	3.257	(2)	2.099	4.551

Municipality of São Paulo, 3rd Quarter 2023 (In R\$)

Sex and color/race	Total population aged 14 and over	Young people aged 14 to 29	14 to 17 years	18 to 24 years	25 to 29 years
Black women	2.751	2.318	(2)	1.850	3.057
White women	5.429	3.418	(2)	2.752	4.231
Black men	3.487	2.383	(2)	2.079	2.720
White men	7.912	4.489	(2)	2.850	6.105
Total¹	5.220	3.252	(2)	2.401	4.219

Municipality of São Paulo, 3rd Quarter 2021 (In R\$)

Sex and color/race	Total population aged 14 and over	Young people aged 14 to 29	14 to 17 years	18 to 24 years	25 to 29 years
Black women	2.535	2.244	(2)	1.859	2.698
White women	5.512	3.159	(2)	1.910	4.025
Black men	3.136	2.561	(2)	1.821	3.221
White men	7.152	4.229	(2)	2.466	5.673
Total¹	5.034	3.178	(2)	2.060	4.114

Municipality of São Paulo, 3rd Quarter 2016 (In R\$)

Sex and color/race	Total population aged 14 and over	Young people aged 14 to 29	14 to 17 years	18 to 24 years	25 to 29 years
Black women	2.264	1.889	965	1.616	2.313
White women	5.191	3.264	1.021	2.072	4.427
Black men	2.748	2.152	(2)	1.821	2.565
White men	7.016	3.481	1.074	2.266	4.527
Total¹	4.928	2.872	(2)	1.993	3.785

Source: IBGE. Continuous Quarterly Pnad

Note: (1) The total includes people of unknown color/race and indigenous people.

(2) The sample does not include a breakdown for this category (maximum CV of 15.0%)

Note: a) Black people= black and brown; White people= white and yellow

Estimate of the composite rate of underutilization of the workforce, by age group, gender and color/race

Brazil, 3rd Quarter 2024 (In %)

Sex and color/race	Total population aged 14 and over	Young people aged 14 to 29	14 to 17 years	18 to 24 years	25 to 29 years
Black women	23,2	32,4	61,3	34,6	24,3
White women	14,5	21,7	46,9	23,9	15,1
Black men	14,7	22,1	49,1	24,1	14,1
White men	9,6	16,2	44,4	16,9	10,6
Total¹	15,7	23,5	50,9	25,4	16,2

Brazil, 3rd Quarter 2023 (In %)

Sex and color/race	Total population aged 14 and over	Young people aged 14 to 29	14 to 17 years	18 to 24 years	25 to 29 years
Black women	26,5	35,7	69,3	36,9	27,3
White women	15,9	23,5	50,0	26,5	16,2
Black men	16,6	24,9	53,6	27,0	16,1
White men	10,7	18,6	47,4	20,8	11,4
Total¹	17,6	26,2	56,3	28,3	18,0

Brazil, 3rd Quarter 2021 (In %)

Sex and color/race	Total population aged 14 and over	Young people aged 14 to 29	14 to 17 years	18 to 24 years	25 to 29 years
Black women	39,1	50,3	79,7	52,9	39,6
White women	26,0	37,7	70,6	41,9	26,2
Black men	24,1	35,0	65,0	38,0	22,7
White men	16,7	28,0	61,2	30,6	18,0
Total¹	26,5	38,2	69,2	41,3	26,8

Brazil, 3rd Quarter 2016 (In %)

Sex and color/race	Total population aged 14 and over	Young people aged 14 to 29	14 to 17 years	18 to 24 years	25 to 29 years
Black women	31,1	44,6	73,0	47,8	32,5
White women	19,5	30,9	64,0	34,8	20,2
Black men	21,3	32,2	60,0	34,7	20,6
White men	13,5	23,9	51,1	27,0	14,8
Total¹	21,3	33,1	62,3	36,4	21,9

Source: IBGE. Continuous Quarterly PNAD

Note: (1) The total includes people of unknown color/race and indigenous people.

(2) The sample does not include a breakdown for this category (maximum CV of 15.0%).

Note: a) Black people= black and brown; white people= white and yellow

b) The composite underutilization rate was considered to be the proportion of underemployed due to insufficient hours, unemployed and potential workforce, in relation to the expanded workforce, expressed as a percentage

Estimate of the composite rate of underutilization of the workforce, by age group, gender and color/race

State of São Paulo, 3rd Quarter 2024 (In %)

Sex and color/race	Total population aged 14 and over	Young people aged 14 to 29	14 to 17 years	18 to 24 years	25 to 29 years
Black women	17,0	23,6	59,8	24,8	14,7
White women	13,2	19,5	42,8	21,2	14,1
Black men	11,7	18,6	49,3	19,1	10,0
White men	8,9	14,8	49,8	14,2	9,8
Total¹	12,3	18,8	50,1	19,5	11,8

State of São Paulo, 3rd Quarter 2023 (In %)

Sex and color/race	Total population aged 14 and over	Young people aged 14 to 29	14 to 17 years	18 to 24 years	25 to 29 years
Black women	20,8	26,7	67,9	24,5	18,9
White women	14,7	19,6	49,5	21,0	13,5
Black men	11,8	17,7	61,6	17,8	9,4
White men	10,1	16,9	52,3	19,0	9,4
Total¹	13,8	19,8	58,3	20,4	12,3

State of São Paulo, 3rd Quarter 2021 (In %)

Sex and color/race	Total population aged 14 and over	Young people aged 14 to 29	14 to 17 years	18 to 24 years	25 to 29 years
Black women	35,0	42,4	81,1	44,9	30,4
White women	26,5	36,5	77,9	39,6	24,8
Black men	21,0	31,1	76,1	32,8	17,4
White men	16,9	27,6	66,8	29,4	18,1
Total¹	23,9	34,0	75,1	36,4	22,3

State of São Paulo, 3rd Quarter 2016 (In %)

Sex and color/race	Total population aged 14 and over	Young people aged 14 to 29	14 to 17 years	18 to 24 years	25 to 29 years
Black women	28,1	41,6	69,0	45,5	28,1
White women	19,5	30,7	68,9	34,0	20,5
Black men	18,2	29,9	64,9	31,4	18,1
White men	14,1	25,5	62,4	30,1	14,8
Total¹	18,8	30,8	66,0	34,5	19,1

Source: IBGE. Continuous Quarterly PNAD

Note: (1) The total includes people of unknown color/race and indigenous people.

(2) The sample does not include a breakdown for this category (maximum CV of 15.0%).

Note: a) Black people= black and brown; white people= white and yellow

b) The composite underutilization rate was considered to be the proportion of underemployed due to insufficient hours, unemployed and potential workforce, in relation to the expanded workforce, expressed as a percentage

Estimate of the composite rate of underutilization of the workforce, by age group, gender and color/race

São Paulo Metropolitan Region, 3rd Quarter 2024 (In %)

Sex and color/race	Total population aged 14 and over	Young people aged 14 to 29	14 to 17 years	18 to 24 years	25 to 29 years
Black women	15,4	23,1	62,5	25,7	11,7
White women	12,6	17,5	47,1	16,7	(2)
Black men	12,1	18,5	49,4	22,0	(2)
White men	10,4	17,4	42,6	18,6	(2)
Total¹	12,5	18,9	50,0	20,6	11,1

São Paulo Metropolitan Region, 3rd Quarter 2023 (In %)

Sex and color/race	Total population aged 14 and over	Young people aged 14 to 29	14 to 17 years	18 to 24 years	25 to 29 years
Black women	20,8	27,7	72,9	26,0	18,2
White women	14,8	18,8	48,2	21,3	(2)
Black men	12,7	18,6	71,8	20,2	(2)
White men	11,9	19,5	64,4	22,7	(2)
Total¹	14,8	21,0	65,4	22,5	12,1

São Paulo Metropolitan Region, 3rd Quarter 2021 (In %)

Sex and color/race	Total population aged 14 and over	Young people aged 14 to 29	14 to 17 years	18 to 24 years	25 to 29 years
Black women	34,3	42,3	79,1	44,0	32,5
White women	25,7	36,1	85,6	41,0	(2)
Black men	23,8	34,1	83,1	37,6	(2)
White men	19,3	29,4	84,0	33,2	(2)
Total¹	25,2	35,4	83,0	38,9	22,1

São Paulo Metropolitan Region, 3rd Quarter 2016 (In %)

Sex and color/race	Total population aged 14 and over	Young people aged 14 to 29	14 to 17 years	18 to 24 years	25 to 29 years
Black women	27,6	40,3	(2)	44,9	29,7
White women	19,7	30,4	61,4	35,2	20,7
Black men	18,3	30,7	61,1	33,9	19,6
White men	14,9	26,6	72,9	32,4	14,7
Total¹	19,2	31,1	63,7	36,0	19,9

Source: IBGE. Continuous Quarterly PNAD

Note: (1) The total includes people of unknown color/race and indigenous people.

(2) The sample does not include a breakdown for this category (maximum CV of 15.0%).

Note: a) Black people= black and brown; white people= white and yellow

b) The composite underutilization rate was considered to be the proportion of underemployed due to insufficient hours, unemployed and potential workforce, in relation to the expanded workforce, expressed as a percentage

Estimate of the composite rate of underutilization of the workforce, by age group, gender and color/race

Municipality of São Paulo, 3rd Quarter 2024 (In %)

Sex and color/race	Total population aged 14 and over	Young people aged 14 to 29	14 to 17 years	18 to 24 years	25 to 29 years
Black women	15,9	20,0	54,4	23,1	11,2
White women	12,6	16,2	49,3	16,9	(2)
Black men	10,7	19,4	48,3	23,9	(2)
White men	10,1	15,2	30,6	17,8	(2)
Total¹	12,1	17,6	44,0	20,5	10,3

Municipality of São Paulo, 3rd Quarter 2023 (In %)

Sex and color/race	Total population aged 14 and over	Young people aged 14 to 29	14 to 17 years	18 to 24 years	25 to 29 years
Black women	19,6	25,2	70,4	22,6	17,0
White women	14,4	18,7	45,7	21,9	(2)
Black men	12,6	15,9	62,0	18,7	(2)
White men	13,4	21,2	53,3	25,3	(2)
Total¹	14,8	20,2	58,8	22,3	12,4

Municipality of São Paulo, 3rd Quarter 2021 (In %)

Sex and color/race	Total population aged 14 and over	Young people aged 14 to 29	14 to 17 years	18 to 24 years	25 to 29 years
Black women	35,4	45,0	88,4	45,1	35,6
White women	23,7	32,4	91,0	41,6	(2)
Black men	24,2	34,1	74,1	43,8	(2)
White men	20,0	31,3	85,6	37,2	(2)
Total¹	25,0	35,4	84,6	41,7	22,1

Municipality of São Paulo, 3rd Quarter 2016 (In %)

Sex and color/race	Total population aged 14 and over	Young people aged 14 to 29	14 to 17 years	18 to 24 years	25 to 29 years
Black women	25,4	36,8	(2)	42,2	25,9
White women	18,7	28,3	(2)	33,1	18,9
Black men	16,5	27,1	(2)	29,0	(2)
White men	15,7	26,9	76,4	32,6	14,6
Total¹	18,3	29,0	61,2	33,8	18,3

Source: IBGE. Continuous Quarterly PNAD

Note: (1) The total includes people of unknown color/race and indigenous people.

(2) The sample does not include a breakdown for this category (maximum CV of 15.0%).

Note: a) Black people= black and brown; white people= white and yellow

b) The composite underutilization rate was considered to be the proportion of underemployed due to insufficient hours, unemployed and potential workforce, in relation to the expanded workforce, expressed as a percentage

Estimated unemployed population, by age group, sex and color/race

Brazil, 3rd Quarter 2024 (In 1,000 people)

Sex and color/race	Total population aged 14 and over	Young people aged 14 to 29	14 to 17 years	18 to 24 years	25 to 29 years
Black women	2.447	1.225	163	694	368
White women	1.240	606	83	351	171
Black men	2.127	1.107	147	647	313
White men	1.148	588	96	312	180
Total¹	7.001	3.543	491	2.015	1.037

Brazil, 3rd Quarter 2023 (In 1,000 people)

Sex and color/race	Total population aged 14 and over	Young people aged 14 to 29	14 to 17 years	18 to 24 years	25 to 29 years
Black women	2.883	1.409	196	788	425
White women	1.502	727	82	449	197
Black men	2.537	1.332	194	786	352
White men	1.344	704	99	411	194
Total¹	8.316	4.200	572	2.447	1.181

Brazil, 3rd Quarter 2021 (In 1,000 people)

Sex and color/race	Total population aged 14 and over	Young people aged 14 to 29	14 to 17 years	18 to 24 years	25 to 29 years
Black women	4.681	2.364	243	1.414	707
White women	2.662	1.324	150	795	379
Black men	3.841	2.098	311	1.246	541
White men	2.209	1.188	163	694	331
Total¹	13.453	7.013	873	4.168	1.972

Brazil, 3rd Quarter 2016 (In 1,000 people)

Sex and color/race	Total population aged 14 and over	Young people aged 14 to 29	14 to 17 years	18 to 24 years	25 to 29 years
Black women	3.763	2.168	307	1.274	586
White women	2.318	1.309	187	773	349
Black men	3.835	2.183	343	1.287	553
White men	2.213	1.266	177	737	352
Total¹	12.156	6.941	1.016	4.081	1.844

Source: IBGE. Continuous Quarterly Pnad

Note: (1) The total includes people of unknown color/race and indigenous people.

Note: a) Black people= black and brown; white people= white and yellow

Estimated unemployed population, by age group, sex and color/race

State of São Paulo, 3rd Quarter 2024 (In 1,000 people)

Sex and color/race	Total population aged 14 and over	Young people aged 14 to 29	14 to 17 years	18 to 24 years	25 to 29 years
Black women	446	211	(2)	111	54
White women	387	188	(2)	106	54
Black men	404	203	(2)	109	57
White men	348	176	(2)	90	57
Total¹	1.593	783	140	421	222

State of São Paulo, 3rd Quarter 2023 (In 1,000 people)

Sex and color/race	Total population aged 14 and over	Young people aged 14 to 29	14 to 17 years	18 to 24 years	25 to 29 years
Black women	549	263	(2)	130	66
White women	466	220	(2)	138	55
Black men	401	201	(2)	113	(2)
White men	437	225	(2)	133	56
Total¹	1.862	914	176	515	223

State of São Paulo, 3rd Quarter 2021 (In 1,000 people)

Sex and color/race	Total population aged 14 and over	Young people aged 14 to 29	14 to 17 years	18 to 24 years	25 to 29 years
Black women	958	467	(2)	283	129
White women	940	445	(2)	262	128
Black men	710	392	(2)	230	(2)
White men	797	429	(2)	231	137
Total¹	3.426	1.750	256	1.017	477

State of São Paulo, 3rd Quarter 2016 (In 1,000 people)

Sex and color/race	Total population aged 14 and over	Young people aged 14 to 29	14 to 17 years	18 to 24 years	25 to 29 years
Black women	749	444	(2)	268	112
White women	882	478	73	277	128
Black men	655	390	(2)	221	90
White men	865	482	68	278	136
Total¹	3.155	1.796	283	1.044	468

Source: IBGE. Continuous Quarterly Pnad

Note: (1) The total includes people of unknown color/race and indigenous people.

(2) The sample does not include a breakdown for this category (maximum CV of 15.0%)

Note: a) Black people= black and brown; White people= white and yellow

Estimated unemployed population, by age group, sex and color/race

São Paulo Metropolitan Region, 3rd Quarter 2024 (In 1,000 people)

Sex and color/race	Total population aged 14 and over	Young people aged 14 to 29	14 to 17 years	18 to 24 years	25 to 29 years
Black women	236	109	(2)	61	(2)
White women	174	72	(2)	(2)	(2)
Black men	207	100	(2)	63	(2)
White men	216	106	(2)	57	(2)
Total¹	838	392	70	220	102

São Paulo Metropolitan Region, 3rd Quarter 2023 (In 1,000 people)

Sex and color/race	Total population aged 14 and over	Young people aged 14 to 29	14 to 17 years	18 to 24 years	25 to 29 years
Black women	318	169	(2)	87	(2)
White women	245	107	(2)	(2)	(2)
Black men	223	116	(2)	(2)	(2)
White men	258	148	(2)	(2)	(2)
Total¹	1.046	540	103	311	126

São Paulo Metropolitan Region, 3rd Quarter 2021 (In 1,000 people)

Sex and color/race	Total population aged 14 and over	Young people aged 14 to 29	14 to 17 years	18 to 24 years	25 to 29 years
Black women	571	282	(2)	164	(2)
White women	425	197	(2)	(2)	(2)
Black men	434	238	(2)	(2)	(2)
White men	422	220	(2)	(2)	(2)
Total¹	1.868	950	151	540	258

São Paulo Metropolitan Region, 3rd Quarter 2016 (In 1,000 people)

Sex and color/race	Total population aged 14 and over	Young people aged 14 to 29	14 to 17 years	18 to 24 years	25 to 29 years
Black women	430	245	(2)	145	(2)
White women	471	247	(2)	143	73
Black men	348	208	(2)	126	(2)
White men	436	249	(2)	157	(2)
Total¹	1.684	948	120	570	258

Source: IBGE. Continuous Quarterly PNAD

Note: (1) The total includes people of unknown color/race and indigenous people.

(2) The sample does not include a breakdown for this category (maximum CV of 15.0%)

Note: a) Black people= black and brown; white people= white and yellow

Estimated unemployed population, by age group, sex and color/race

Municipality of São Paulo, 3rd Quarter 2024 (In 1,000 people)

Sex and color/race	Total population aged 14 and over	Young people aged 14 to 29	14 to 17 years	18 to 24 years	25 to 29 years
Black women	119	45	(2)	(2)	(2)
White women	96	37	(2)	(2)	(2)
Black men	88	57	(2)	(2)	(2)
White men	114	(2)	(2)	(2)	(2)
Total¹	421	192	(2)	109	54

Municipality of São Paulo, 3rd Quarter 2023 (In 1,000 people)

Sex and color/race	Total population aged 14 and over	Young people aged 14 to 29	14 to 17 years	18 to 24 years	25 to 29 years
Black women	141	72	(2)	37	(2)
White women	134	60	(2)	(2)	(2)
Black men	116	59	(2)	(2)	(2)
White men	153	(2)	(2)	(2)	(2)
Total¹	545	278	(2)	166	66

Municipality of São Paulo, 3rd Quarter 2021 (In 1,000 people)

Sex and color/race	Total population aged 14 and over	Young people aged 14 to 29	14 to 17 years	18 to 24 years	25 to 29 years
Black women	290	150	(2)	84	(2)
White women	213	94	(2)	(2)	(2)
Black men	203	111	(2)	(2)	(2)
White men	247	(2)	(2)	(2)	(2)
Total¹	959	496	(2)	272	155

Municipality of São Paulo, 3rd Quarter 2016 (In 1,000 people)

Sex and color/race	Total population aged 14 and over	Young people aged 14 to 29	14 to 17 years	18 to 24 years	25 to 29 years
Black women	201	116	(2)	71	(2)
White women	253	131	(2)	75	(2)
Black men	162	94	(2)	(2)	(2)
White men	262	149	(2)	90	(2)
Total¹	878	490	67	291	132

Source: IBGE. Continuous Quarterly PNAD

Note: (1) The total includes people of unknown color/race and indigenous people.

(2) The sample does not include a breakdown for this category (maximum CV of 15.0%)

Note: a) Black people= black and brown; White people= white and yellow

Estimate of the unemployed population, by age group, sex and color/race

Brazil, 3rd Quarter 2024 (In %)

Sex and color/race	Total population aged 14 and over	Young people aged 14 to 29	14 to 17 years	18 to 24 years	25 to 29 years
Black women	9,3	16,0	35,3	18,4	10,7
White women	5,7	10,8	24,5	12,7	6,8
Black men	6,0	10,4	20,3	12,3	6,7
White men	4,4	8,8	23,0	9,8	5,8
Total¹	6,4	11,5	25,1	13,4	7,5

Brazil, 3rd Quarter 2023 (In %)

Sex and color/race	Total population aged 14 and over	Young people aged 14 to 29	14 to 17 years	18 to 24 years	25 to 29 years
Black women	11,3	18,3	42,5	20,4	12,6
White women	7,0	12,7	25,0	16,2	7,5
Black men	7,4	12,8	27,5	15,0	7,8
White men	5,1	10,3	25,0	12,4	6,2
Total¹	7,7	13,6	30,2	16,0	8,6

Brazil, 3rd Quarter 2021 (In %)

Sex and color/race	Total population aged 14 and over	Young people aged 14 to 29	14 to 17 years	18 to 24 years	25 to 29 years
Black women	18,9	29,4	49,9	33,8	20,9
White women	12,4	22,4	43,8	27,0	14,4
Black men	11,3	19,4	36,1	22,7	12,1
White men	8,5	16,6	35,2	19,7	10,5
Total¹	12,6	21,9	40,4	25,7	14,4

Brazil, 3rd Quarter 2016 (In %)

Sex and color/race	Total population aged 14 and over	Young people aged 14 to 29	14 to 17 years	18 to 24 years	25 to 29 years
Black women	16,5	28,3	51,1	32,4	18,8
White women	11,0	20,2	44,6	24,6	12,0
Black men	12,0	20,2	35,2	23,6	12,6
White men	8,5	16,5	32,0	19,9	10,3
Total¹	11,9	21,2	39,8	25,1	13,3

Source: IBGE. Continuous Quarterly PNAD

Note: (1) The total includes people of unknown color/race and indigenous people.

(2) The sample does not include a breakdown for this category (maximum CV of 15.0%)

Note: a) Black people= black and brown; White people= white and yellow

Estimate of the unemployed population, by age group, sex and color/race

State of São Paulo, 3rd Quarter 2024 (In %)

Sex and color/race	Total population aged 14 and over	Young people aged 14 to 29	14 to 17 years	18 to 24 years	25 to 29 years
Black women	9,0	15,2	43,6	16,4	9,0
White women	5,6	11,0	29,3	12,1	7,3
Black men	6,2	10,4	23,6	11,5	6,7
White men	4,4	8,9	26,5	9,4	6,2
Total¹	6,0	11,1	29,6	12,1	7,1

State of São Paulo, 3rd Quarter 2023 (In %)

Sex and color/race	Total population aged 14 and over	Young people aged 14 to 29	14 to 17 years	18 to 24 years	25 to 29 years
Black women	11,0	17,5	52,9	16,7	11,1
White women	6,8	12,2	26,4	15,4	6,8
Black men	6,7	11,3	43,5	12,3	(2)
White men	5,3	10,5	31,9	12,9	5,6
Total¹	7,1	12,6	39,3	14,2	7,0

State of São Paulo, 3rd Quarter 2021 (In %)

Sex and color/race	Total population aged 14 and over	Young people aged 14 to 29	14 to 17 years	18 to 24 years	25 to 29 years
Black women	20,7	29,2	59,2	32,8	19,9
White women	13,5	23,8	56,4	27,2	15,7
Black men	12,4	21,5	57,1	24,7	(2)
White men	9,7	19,2	46,7	21,2	13,5
Total¹	13,4	23,1	54,8	26,3	14,7

State of São Paulo, 3rd Quarter 2016 (In %)

Sex and color/race	Total population aged 14 and over	Young people aged 14 to 29	14 to 17 years	18 to 24 years	25 to 29 years
Black women	19,5	34,0	59,6	37,7	23,0
White women	12,4	22,6	55,5	27,0	13,4
Black men	12,9	22,8	48,7	26,0	12,9
White men	10,3	20,0	45,1	25,2	11,8
Total¹	12,9	23,8	51,4	28,3	14,2

Source: IBGE. Continuous Quarterly PNAD

Note: (1) The total includes people of unknown color/race and indigenous people.

(2) The sample does not include a breakdown for this category (maximum CV of 15.0%)

Note: a) Black people= black and brown; White people= white and yellow

Estimate of the unemployed population, by age group, sex and color/race

São Paulo Metropolitan Region, 3rd Quarter 2024 (In %)

Sex and color/race	Total population aged 14 and over	Young people aged 14 to 29	14 to 17 years	18 to 24 years	25 to 29 years
Black women	9,1	15,9	45,5	18,5	(2)
White women	5,5	9,1	37,4	(2)	(2)
Black men	6,3	10,5	20,3	13,7	(2)
White men	6,0	12,1	29,9	13,7	(2)
Total¹	6,6	11,8	31,5	13,6	6,8

São Paulo Metropolitan Region, 3rd Quarter 2023 (In %)

Sex and color/race	Total population aged 14 and over	Young people aged 14 to 29	14 to 17 years	18 to 24 years	25 to 29 years
Black women	12,0	21,1	61,3	20,7	(2)
White women	7,6	12,9	22,7	17,1	(2)
Black men	7,4	12,7	58,9	15,0	(2)
White men	6,9	14,1	51,2	17,7	(2)
Total¹	8,3	15,0	49,7	17,6	7,8

São Paulo Metropolitan Region, 3rd Quarter 2021 (In %)

Sex and color/race	Total population aged 14 and over	Young people aged 14 to 29	14 to 17 years	18 to 24 years	25 to 29 years
Black women	22,1	31,6	(2)	34,7	(2)
White women	13,1	22,3	65,4	27,0	(2)
Black men	15,1	25,4	67,3	28,5	(2)
White men	11,4	21,6	73,7	24,2	(2)
Total¹	15,0	25,2	67,1	28,8	15,6

São Paulo Metropolitan Region, 3rd Quarter 2016 (In %)

Sex and color/race	Total population aged 14 and over	Young people aged 14 to 29	14 to 17 years	18 to 24 years	25 to 29 years
Black women	21,0	35,1	52,6	(2)	(2)
White women	13,8	24,3	50,0	(2)	15,2
Black men	13,6	24,1	42,7	28,8	(2)
White men	11,1	22,1	58,3	29,3	11,3
Total¹	14,1	25,6	50,2	31,4	15,6

Source: IBGE. Continuous Quarterly PNAD

Note: (1) The total includes people of unknown color/race and indigenous people.

(2) The sample does not include a breakdown for this category (maximum CV of 15.0%)

Note: a) Black people= black and brown; White people= white and yellow

Estimate of the unemployed population, by age group, sex and color/race

Municipality of São Paulo, 3rd Quarter 2024 (In %)

Sex and color/race	Total population aged 14 and over	Young people aged 14 to 29	14 to 17 years	18 to 24 years	25 to 29 years
Black women	8,2	12,2	38,8	14,1	(2)
White women	5,0	8,1	41,9	(2)	(2)
Black men	5,2	11,3	(2)	14,3	(2)
White men	5,3	9,3	(2)	(2)	(2)
Total¹	5,8	10,3	25,8	12,1	6,3

Municipality of São Paulo, 3rd Quarter 2023 (In %)

Sex and color/race	Total population aged 14 and over	Young people aged 14 to 29	14 to 17 years	18 to 24 years	25 to 29 years
Black women	9,7	17,1	54,2	16,5	(2)
White women	6,8	12,2	16,4	(2)	(2)
Black men	7,3	11,9	(2)	16,0	(2)
White men	7,1	14,4	(2)	(2)	(2)
Total¹	7,6	13,9	41,8	17,0	7,2

Municipality of São Paulo, 3rd Quarter 2021 (In %)

Sex and color/race	Total population aged 14 and over	Young people aged 14 to 29	14 to 17 years	18 to 24 years	25 to 29 years
Black women	21,4	33,1	76,0	36,2	(2)
White women	10,9	19,0	85,9	(2)	(2)
Black men	14,0	24,7	(2)	32,3	(2)
White men	11,0	22,1	(2)	(2)	(2)
Total¹	13,6	24,4	69,3	29,4	15,4

Municipality of São Paulo, 3rd Quarter 2016 (In %)

Sex and color/race	Total population aged 14 and over	Young people aged 14 to 29	14 to 17 years	18 to 24 years	25 to 29 years
Black women	18,4	30,5	(2)	35,1	(2)
White women	12,2	22,0	(2)	27,5	(2)
Black men	12,3	21,2	(2)	24,4	(2)
White men	11,0	21,5	(2)	28,1	(2)
Total¹	12,7	23,1	49,1	28,5	13,8

Source: IBGE. Continuous Quarterly PNAD

Note: (1) The total includes people of unknown color/race and indigenous people.

(2) The sample does not include a breakdown for this category (maximum CV of 15.0%)

Note: a) Black people= black and brown; White people= white and yellow

Estimated proportion of unemployed people with 2 years or more of job search time, by sex, color/race and age group

Brazil, 3rd Quarter 2024 (In %)

Sex and color/race	Total population aged 14 and over	Young people aged 14 to 29	14 to 17 years	18 to 24 years	25 to 29 years
Black women	24,1	19,2	(2)	19,2	22,2
White women	24,3	18,0	(2)	19,1	17,2
Black men	16,7	15,5	(2)	15,4	18,5
White men	18,9	16,0	(2)	15,5	17,6
Total¹	21,0	17,3	12,5	17,4	19,4

Brazil, 3rd Quarter 2023 (In %)

Sex and color/race	Total population aged 14 and over	Young people aged 14 to 29	14 to 17 years	18 to 24 years	25 to 29 years
Black women	25,6	21,0	(2)	22,5	24,3
White women	23,9	18,8	(2)	17,2	25,2
Black men	18,6	17,3	(2)	18,3	18,8
White men	19,7	16,5	(2)	18,3	18,1
Total¹	22,2	18,7	8,8	19,4	21,9

Brazil, 3rd Quarter 2021 (In %)

Sex and color/race	Total population aged 14 and over	Young people aged 14 to 29	14 to 17 years	18 to 24 years	25 to 29 years
Black women	33,9	30,5	(2)	31,3	34,2
White women	31,9	27,9	(2)	28,0	34,7
Black men	23,4	23,3	(2)	25,5	25,9
White men	24,3	23,2	(2)	25,6	22,2
Total¹	28,9	26,6	12,4	28,0	30,1

Brazil, 3rd Quarter 2016 (In %)

Sex and color/race	Total population aged 14 and over	Young people aged 14 to 29	14 to 17 years	18 to 24 years	25 to 29 years
Black women	25,2	21,8	10,1	22,3	26,8
White women	22,2	19,4	(2)	18,7	24,5
Black men	15,7	16,0	9,7	18,2	14,7
White men	15,3	14,6	(2)	15,0	15,8
Total¹	19,8	18,2	10,5	19,0	20,6

Source: IBGE. Continuous Quarterly PNAD

Note: (1) The total includes people of unknown color/race and indigenous people.

(2) The sample does not include a breakdown for this category (maximum CV of 15.0%)

Note: a) Black people= black and brown; White people= white and yellow

Estimated proportion of unemployed people with 2 years or more of job search time, by sex, color/race and age group

State of São Paulo, 3rd Quarter 2024 (In %)

Sex and color/race	Total population aged 14 and over	Young people aged 14 to 29	14 to 17 years	18 to 24 years	25 to 29 years
Black women	19,5	12,9	(2)	14,0	(2)
White women	24,2	15,5	(2)	18,8	(2)
Black men	16,5	11,6	(2)	(2)	(2)
White men	20,5	17,0	(2)	(2)	(2)
Total¹	20,1	14,1	(2)	14,8	10,6

State of São Paulo, 3rd Quarter 2023 (In %)

Sex and color/race	Total population aged 14 and over	Young people aged 14 to 29	14 to 17 years	18 to 24 years	25 to 29 years
Black women	14,8	10,3	(2)	16,8	(2)
White women	21,3	15,8	(2)	14,5	(2)
Black men	18,5	12,0	(2)	(2)	(2)
White men	20,0	15,2	(2)	(2)	(2)
Total¹	18,5	13,2	(2)	17,2	10,7

State of São Paulo, 3rd Quarter 2021 (In %)

Sex and color/race	Total population aged 14 and over	Young people aged 14 to 29	14 to 17 years	18 to 24 years	25 to 29 years
Black women	33,0	26,6	(2)	27,6	(2)
White women	31,8	27,8	(2)	28,4	(2)
Black men	19,8	19,7	(2)	(2)	(2)
White men	26,0	24,7	(2)	(2)	(2)
Total¹	28,3	25,0	(2)	26,9	27,0

State of São Paulo, 3rd Quarter 2016 (In %)

Sex and color/race	Total population aged 14 and over	Young people aged 14 to 29	14 to 17 years	18 to 24 years	25 to 29 years
Black women	20,4	17,2	(2)	(2)	(2)
White women	21,2	16,1	(2)	(2)	(2)
Black men	15,3	(2)	(2)	(2)	(2)
White men	16,5	14,1	(2)	(2)	(2)
Total¹	18,5	15,4	(2)	16,1	17,4

Source: IBGE. Continuous Quarterly PNAD

Note: (1) The total includes people of unknown color/race and indigenous people.

(2) The sample does not include a breakdown for this category (maximum CV of 15.0%)

Note: a) Black people= black and brown; White people= white and yellow

Estimated proportion of unemployed people with 2 years or more of job search time, by sex, color/race and age group

São Paulo Metropolitan Region, 3rd Quarter 2024 (In %)

Sex and color/race	Total population aged 14 and over	Young people aged 14 to 29	14 to 17 years	18 to 24 years	25 to 29 years
Black women	19,3	(2)	(2)	(2)	(2)
White women	26,8	(2)	(2)	(2)	(2)
Black men	20,2	(2)	(2)	(2)	(2)
White men	22,8	(2)	(2)	(2)	(2)
Total¹	22,0	14,3	(2)	(2)	(2)

São Paulo Metropolitan Region, 3rd Quarter 2023 (In %)

Sex and color/race	Total population aged 14 and over	Young people aged 14 to 29	14 to 17 years	18 to 24 years	25 to 29 years
Black women	14,8	(2)	(2)	(2)	(2)
White women	23,7	(2)	(2)	(2)	(2)
Black men	(2)	(2)	(2)	(2)	(2)
White men	19,0	(2)	(2)	(2)	(2)
Total¹	18,7	12,9	(2)	18,2	(2)

São Paulo Metropolitan Region, 3rd Quarter 2021 (In %)

Sex and color/race	Total population aged 14 and over	Young people aged 14 to 29	14 to 17 years	18 to 24 years	25 to 29 years
Black women	33,8	(2)	(2)	(2)	(2)
White women	33,5	(2)	(2)	(2)	(2)
Black men	(2)	(2)	(2)	(2)	(2)
White men	27,7	(2)	(2)	(2)	(2)
Total¹	28,6	26,3	(2)	30,0	(2)

São Paulo Metropolitan Region, 3rd Quarter 2016 (In %)

Sex and color/race	Total population aged 14 and over	Young people aged 14 to 29	14 to 17 years	18 to 24 years	25 to 29 years
Black women	17,4	(2)	(2)	(2)	(2)
White women	20,8	(2)	(2)	(2)	(2)
Black men	(2)	(2)	(2)	(2)	(2)
White men	(2)	(2)	(2)	(2)	(2)
Total¹	17,6	14,4	(2)	15,3	(2)

Source: IBGE. Continuous Quarterly PNAD

Note: (1) The total includes people of unknown color/race and indigenous people.

(2) The sample does not include a breakdown for this category (maximum CV of 15.0%)

Note: a) Black people= black and brown; White people= white and yellow

Estimated proportion of unemployed people with 2 years or more of job search time, by sex, color/race and age group

Municipality of São Paulo, 3rd Quarter 2024 (In %)

Sex and color/race	Total population aged 14 and over	Young people aged 14 to 29	14 to 17 years	18 to 24 years	25 to 29 years
Black women	23,1	(2)	(2)	(2)	(2)
White women	24,9	(2)	(2)	(2)	(2)
Black men	(2)	(2)	(2)	(2)	(2)
White men	27,0	(2)	(2)	(2)	(2)
Total¹	22,5	15,6	(2)	(2)	(2)

Municipality of São Paulo, 3rd Quarter 2023 (In %)

Sex and color/race	Total population aged 14 and over	Young people aged 14 to 29	14 to 17 years	18 to 24 years	25 to 29 years
Black women	18,4	(2)	(2)	(2)	(2)
White women	26,6	(2)	(2)	(2)	(2)
Black men	(2)	(2)	(2)	(2)	(2)
White men	21,7	(2)	(2)	(2)	(2)
Total¹	21,2	14,4	(2)	17,3	(2)

Municipality of São Paulo, 3rd Quarter 2021 (In %)

Sex and color/race	Total population aged 14 and over	Young people aged 14 to 29	14 to 17 years	18 to 24 years	25 to 29 years
Black women	38,2	(2)	(2)	(2)	(2)
White women	37,8	(2)	(2)	(2)	(2)
Black men	(2)	(2)	(2)	(2)	(2)
White men	30,2	(2)	(2)	(2)	(2)
Total¹	33,2	32,5	(2)	37,2	(2)

Municipality of São Paulo, 3rd Quarter 2016 (In %)

Sex and color/race	Total population aged 14 and over	Young people aged 14 to 29	14 to 17 years	18 to 24 years	25 to 29 years
Black women	(2)	(2)	(2)	(2)	(2)
White women	24,7	(2)	(2)	(2)	(2)
Black men	(2)	(2)	(2)	(2)	(2)
White men	(2)	(2)	(2)	(2)	(2)
Total¹	19,0	(2)	(2)	(2)	(2)

Source: IBGE. Continuous Quarterly PNAD

Note: (1) The total includes people of unknown color/race and indigenous people.

(2) The sample does not include a breakdown for this category (maximum CV of 15.0%)

Note: a) Black people= black and brown; White people= white and yellow

Estimate of the discouraged population, by age group, sex and color/race

Brazil, 3rd Quarter 2024 (In 1,000 people)

Sex and color/race	Total population aged 14 and over	Young people aged 14 to 29	14 to 17 years	18 to 24 years	25 to 29 years
Black women	1.276	536	123	272	141
White women	468	166	37	85	45
Black men	1.020	485	120	262	103
White men	322	134	39	61	35
Total¹	3.106	1.331	320	686	325

Brazil, 3rd Quarter 2023 (In 1,000 people)

Sex and color/race	Total population aged 14 and over	Young people aged 14 to 29	14 to 17 years	18 to 24 years	25 to 29 years
Black women	1.420	584	122	307	155
White women	488	187	44	91	51
Black men	1.165	526	139	283	104
White men	399	163	45	84	34
Total¹	3.504	1.473	353	772	347

Brazil, 3rd Quarter 2021 (In 1,000 people)

Sex and color/race	Total population aged 14 and over	Young people aged 14 to 29	14 to 17 years	18 to 24 years	25 to 29 years
Black women	2.134	936	247	465	224
White women	792	327	95	164	67
Black men	1.599	840	264	423	153
White men	593	281	107	122	52
Total¹	5.145	2.395	716	1.179	501

Brazil, 3rd Quarter 2016 (In 1,000 people)

Sex and color/race	Total population aged 14 and over	Young people aged 14 to 29	14 to 17 years	18 to 24 years	25 to 29 years
Black women	1.438	722	188	355	179
White women	501	238	84	106	48
Black men	1.140	641	225	303	113
White men	393	213	79	91	43
Total¹	3.481	1.818	577	858	383

Source: IBGE. Continuous Quarterly PNAD

Note: (1) The total includes people of unknown color/race and indigenous people.

(2) The sample does not include a breakdown for this category (maximum CV of 15.0%)

Note: a) Black people= black and brown; White people= white and yellow

Estimate of the discouraged population, by age group, sex and color/race

State of São Paulo, 3rd Quarter 2024 (In 1,000 people)

Sex and color/race	Total population aged 14 and over	Young people aged 14 to 29	14 to 17 years	18 to 24 years	25 to 29 years
Black women	72	(2)	(2)	(2)	(2)
White women	99	(2)	(2)	(2)	(2)
Black men	70	(2)	(2)	(2)	(2)
White men	58	(2)	(2)	(2)	(2)
Total¹	299	107	(2)	(2)	(2)

State of São Paulo, 3rd Quarter 2023 (In 1,000 people)

Sex and color/race	Total population aged 14 and over	Young people aged 14 to 29	14 to 17 years	18 to 24 years	25 to 29 years
Black women	83	(2)	(2)	(2)	(2)
White women	81	(2)	(2)	(2)	(2)
Black men	58	(2)	(2)	(2)	(2)
White men	71	(2)	(2)	(2)	(2)
Total¹	295	79	(2)	(2)	(2)

State of São Paulo, 3rd Quarter 2021 (In 1,000 people)

Sex and color/race	Total population aged 14 and over	Young people aged 14 to 29	14 to 17 years	18 to 24 years	25 to 29 years
Black women	149	(2)	(2)	(2)	(2)
White women	173	(2)	(2)	(2)	(2)
Black men	109	(2)	(2)	(2)	(2)
White men	126	(2)	(2)	(2)	(2)
Total¹	558	220	(2)	(2)	(2)

State of São Paulo, 3rd Quarter 2016 (In 1,000 people)

Sex and color/race	Total population aged 14 and over	Young people aged 14 to 29	14 to 17 years	18 to 24 years	25 to 29 years
Black women	88	(2)	(2)	(2)	(2)
White women	103	(2)	(2)	(2)	(2)
Black men	(2)	(2)	(2)	(2)	(2)
White men	86	(2)	(2)	(2)	(2)
Total¹	353	151	(2)	(2)	(2)

Source: IBGE. Continuous Quarterly PNAD

Note: (1) The total includes people of unknown color/race and indigenous people.

(2) The sample does not include a breakdown for this category (maximum CV of 15.0%)

Note: a) Black people= black and brown; White people= white and yellow

Estimate of the discouraged population, by age group, sex and color/race

São Paulo Metropolitan Region, 3rd Quarter 2024 (In 1,000 people)

Sex and color/race	Total population aged 14 and over	Young people aged 14 to 29	14 to 17 years	18 to 24 years	25 to 29 years
Black women	(2)	(2)	(2)	(2)	(2)
White women	(2)	(2)	(2)	(2)	(2)
Black men	(2)	(2)	(2)	(2)	(2)
White men	(2)	(2)	(2)	(2)	(2)
Total¹	137	(2)	(2)	(2)	(2)

São Paulo Metropolitan Region, 3rd Quarter 2023 (In 1,000 people)

Sex and color/race	Total population aged 14 and over	Young people aged 14 to 29	14 to 17 years	18 to 24 years	25 to 29 years
Black women	(2)	(2)	(2)	(2)	(2)
White women	(2)	(2)	(2)	(2)	(2)
Black men	(2)	(2)	(2)	(2)	(2)
White men	(2)	(2)	(2)	(2)	(2)
Total¹	143	(2)	(2)	(2)	(2)

São Paulo Metropolitan Region, 3rd Quarter 2021 (In 1,000 people)

Sex and color/race	Total population aged 14 and over	Young people aged 14 to 29	14 to 17 years	18 to 24 years	25 to 29 years
Black women	(2)	(2)	(2)	(2)	(2)
White women	(2)	(2)	(2)	(2)	(2)
Black men	(2)	(2)	(2)	(2)	(2)
White men	(2)	(2)	(2)	(2)	(2)
Total¹	244	(2)	(2)	(2)	(2)

São Paulo Metropolitan Region, 3rd Quarter 2016 (In 1,000 people)

Sex and color/race	Total population aged 14 and over	Young people aged 14 to 29	14 to 17 years	18 to 24 years	25 to 29 years
Black women	(2)	(2)	(2)	(2)	(2)
White women	(2)	(2)	(2)	(2)	(2)
Black men	(2)	(2)	(2)	(2)	(2)
White men	(2)	(2)	(2)	(2)	(2)
Total¹	148	(2)	(2)	(2)	(2)

Source: IBGE. Continuous Quarterly PNAD

Note: (1) The total includes people of unknown color/race and indigenous people.

(2) The sample does not include a breakdown for this category (maximum CV of 15.0%)

Note: a) Black people= black and brown; White people= white and yellow

Estimate of the discouraged population, by age group, sex and color/race

Municipality of São Paulo, 3rd Quarter 2024 (In 1,000 people)

Sex and color/race	Total population aged 14 and over	Young people aged 14 to 29	14 to 17 years	18 to 24 years	25 to 29 years
Black women	(2)	(2)	(2)	(2)	(2)
White women	(2)	(2)	(2)	(2)	(2)
Black men	(2)	(2)	(2)	(2)	(2)
White men	(2)	(2)	(2)	(2)	(2)
Total¹	67	(2)	(2)	(2)	(2)

Municipality of São Paulo, 3rd Quarter 2023 (In 1,000 people)

Sex and color/race	Total population aged 14 and over	Young people aged 14 to 29	14 to 17 years	18 to 24 years	25 to 29 years
Black women	(2)	(2)	(2)	(2)	(2)
White women	(2)	(2)	(2)	(2)	(2)
Black men	(2)	(2)	(2)	(2)	(2)
White men	(2)	(2)	(2)	(2)	(2)
Total¹	92	(2)	(2)	(2)	(2)

Municipality of São Paulo, 3rd Quarter 2021 (In 1,000 people)

Sex and color/race	Total population aged 14 and over	Young people aged 14 to 29	14 to 17 years	18 to 24 years	25 to 29 years
Black women	(2)	(2)	(2)	(2)	(2)
White women	(2)	(2)	(2)	(2)	(2)
Black men	(2)	(2)	(2)	(2)	(2)
White men	(2)	(2)	(2)	(2)	(2)
Total¹	149	(2)	(2)	(2)	(2)

Municipality of São Paulo, 3rd Quarter 2016 (In 1,000 people)

Sex and color/race	Total population aged 14 and over	Young people aged 14 to 29	14 to 17 years	18 to 24 years	25 to 29 years
Black women	(2)	(2)	(2)	(2)	(2)
White women	(2)	(2)	(2)	(2)	(2)
Black men	(2)	(2)	(2)	(2)	(2)
White men	(2)	(2)	(2)	(2)	(2)
Total¹	(2)	(2)	(2)	(2)	(2)

Source: IBGE. Continuous Quarterly PNAD

Note: (1) The total includes people of unknown color/race and indigenous people.

(2) The sample does not include a breakdown for this category (maximum CV of 15.0%)

Note: a) Black people= black and brown; White people= white and yellow

Estimated distribution of the young population aged 14 to 29 by work and study situation, by age group, sex and color/race

Brazil, 3rd Quarter 2024 (In %)

Position in occupation	Total population ages 14 and over	Young people aged 14 to 29				
		Total(1)	White men	Black men	White women	Black women
Works and studies	5,9	12,7	14,8	11,1	15,9	10,8
Works and does not study	52,4	40,9	47,3	49,3	34,7	32,1
Looking for work and studying	0,7	2,2	2,2	2,0	2,1	2,5
Looking for work and not studying	3,2	4,7	3,7	5,0	4,0	5,7
Out of the workforce and studying	7,8	25,6	25,1	23,6	28,4	26,1
Out of the workforce and not studying	29,8	13,9	6,9	9,0	14,9	22,9
Total¹	100,0	100,0	100,0	100,0	100,0	100,0

Brazil, 3rd Quarter 2023 (In %)

Position in occupation	Total population ages 14 and over	Young people aged 14 to 29				
		Total(1)	White men	Black men	White women	Black women
Works and studies	5,9	12,4	14,9	10,6	15,4	10,6
Works and does not study	51,2	39,6	45,4	47,4	34,7	30,8
Looking for work and studying	0,9	2,6	2,5	2,5	2,4	2,9
Looking for work and not studying	3,9	5,6	4,4	6,0	4,8	6,3
Out of the workforce and studying	7,9	25,5	25,3	24,1	27,2	26,1
Out of the workforce and not studying	30,2	14,4	7,5	9,4	15,4	23,3
Total¹	100,0	100,0	100,0	100,0	100,0	100,0

Brazil, 3rd Quarter 2021 (In %)

Position in occupation	Total population ages 14 and over	Young people aged 14 to 29				
		Total(1)	White men	Black men	White women	Black women
Works and studies	5,5	11,3	13,5	10,8	13,4	8,9
Works and does not study	48,6	36,6	43,7	43,9	30,7	28,1
Looking for work and studying	1,5	4,4	4,1	4,5	4,2	4,5
Looking for work and not studying	6,3	9,0	7,3	8,7	8,5	10,9
Out of the workforce and studying	8,2	25,4	24,4	23,5	28,4	26,0
Out of the workforce and not studying	29,9	13,3	7,0	8,6	14,9	21,5
Total¹	100,0	100,0	100,0	100,0	100,0	100,0

Brazil, 3rd Quarter 2016 (In %)

Position in occupation	Total population ages 14 and over	Young people aged 14 to 29				
		Total(1)	White men	Black men	White women	Black women
Works and studies	5,1	10,4	13,2	9,8	12,0	7,9
Works and does not study	50,0	36,8	44,3	43,3	33,3	27,2
Looking for work and studying	1,5	4,0	3,8	4,0	4,1	4,1
Looking for work and not studying	6,0	8,7	7,5	9,5	7,4	9,8
Out of the workforce and studying	8,9	25,5	24,6	24,5	26,5	26,4
Out of the workforce and not studying	28,6	14,6	6,6	8,8	16,7	24,6
Total¹	100,0	100,0	100,0	100,0	100,0	100,0

Source: IBGE. Continuous Quarterly Pnad

Note: (1) The total includes people of unknown color/race and indigenous people.

(2) The sample does not include a breakdown for this category (maximum CV of 15.0%) Note: a) Black people= black and brown; white people= white and yellow

Estimated distribution of the young population aged 14 to 29 by work and study situation, by age group, sex and color/race

State of São Paulo, 3rd Quarter 2024 (In %)

Position in occupation	Total population ages 14 and over	Young people aged 14 to 29				
		Total(1)	White men	Black men	White women	Black women
Works and studies	6,0	14,1	14,6	13,1	16,4	11,7
Works and does not study	56,7	46,1	49,9	53,9	39,5	40,2
Looking for work and studying	0,7	2,5	2,6	2,2	2,1	2,9
Looking for work and not studying	3,3	5,0	3,8	5,6	4,7	6,4
Out of the workforce and studying	6,3	22,4	23,4	17,9	26,3	22,0
Out of the workforce and not studying	27,1	9,9	5,7	7,3	11,0	16,8
Total¹	100,0	100,0	100,0	100,0	100,0	100,0

State of São Paulo, 3rd Quarter 2023 (In %)

Position in occupation	Total population ages 14 and over	Young people aged 14 to 29				
		Total(1)	White men	Black men	White women	Black women
Works and studies	6,3	14,2	15,8	11,6	15,6	13,1
Works and does not study	55,6	45,2	47,3	52,7	40,4	40,3
Looking for work and studying	1,0	3,1	3,4	(2)	2,4	4,0
Looking for work and not studying	3,8	5,4	4,0	5,2	5,4	7,4
Out of the workforce and studying	6,4	22,2	23,3	20,4	23,9	20,5
Out of the workforce and not studying	27,0	9,9	6,2	7,2	12,4	14,8
Total¹	100,0	100,0	100,0	100,0	100,0	100,0

State of São Paulo, 3rd Quarter 2021 (In %)

Position in occupation	Total population ages 14 and over	Young people aged 14 to 29				
		Total(1)	White men	Black men	White women	Black women
Works and studies	5,7	11,9	13,3	9,0	13,5	10,4
Works and does not study	52,0	41,4	45,7	49,9	33,4	37,8
Looking for work and studying	1,7	5,4	5,0	(2)	4,7	5,6
Looking for work and not studying	7,2	10,6	9,0	9,9	9,9	14,2
Out of the workforce and studying	6,5	21,9	21,6	19,1	28,0	17,7
Out of the workforce and not studying	26,9	8,8	5,3	5,8	10,6	14,2
Total¹	100,0	100,0	100,0	100,0	100,0	100,0

State of São Paulo, 3rd Quarter 2016 (In %)

Position in occupation	Total population ages 14 and over	Young people aged 14 to 29				
		Total(1)	White men	Black men	White women	Black women
Works and studies	4,9	10,8	13,0	8,6	12,0	7,7
Works and does not study	53,7	40,2	43,6	46,3	36,7	33,4
Looking for work and studying	1,8	5,3	4,6	5,5	5,5	5,8
Looking for work and not studying	6,8	10,6	9,5	10,7	8,7	15,4
Out of the workforce and studying	7,4	23,2	24,0	22,9	24,0	21,0
Out of the workforce and not studying	25,4	9,9	5,3	5,9	13,1	16,7
Total¹	100,0	100,0	100,0	100,0	100,0	100,0

Source: IBGE. Continuous Quarterly Pnad

Note: (1) The total includes people of unknown color/race and indigenous people.

(2) The sample does not include a breakdown for this category (maximum CV of 15.0%) Note: a) Black people= black and brown; white people= white and yellow

Estimated distribution of the young population aged 14 to 29 by work and study situation, by age group, sex and color/race

São Paulo Metropolitan Region, 3rd Quarter 2024 (In %)

Position in occupation	Total population ages 14 and over	Young people aged 14 to 29				
		Total(1)	White men	Black men	White women	Black women
Works and studies	6,6	15,3	16,4	15,0	16,8	12,8
Works and does not study	56,3	43,2	45,2	50,1	38,9	37,9
Looking for work and studying	0,9	3,0	(2)	(2)	(2)	(2)
Looking for work and not studying	3,6	4,8	4,7	5,2	(2)	6,2
Out of the workforce and studying	6,8	24,0	25,6	18,9	26,9	25,2
Out of the workforce and not studying	25,9	9,6	4,3	8,4	11,8	14,5
Total¹	100,0	100,0	100,0	100,0	100,0	100,0

São Paulo Metropolitan Region, 3rd Quarter 2023 (In %)

Position in occupation	Total population ages 14 and over	Young people aged 14 to 29				
		Total(1)	White men	Black men	White women	Black women
Works and studies	6,9	14,7	15,5	11,6	18,1	13,2
Works and does not study	55,7	44,0	46,3	50,7	39,4	39,0
Looking for work and studying	1,2	3,9	(2)	(2)	(2)	5,0
Looking for work and not studying	4,4	6,4	5,1	5,9	6,0	9,0
Out of the workforce and studying	6,4	21,4	21,6	20,9	23,0	19,9
Out of the workforce and not studying	25,4	9,5	6,4	7,7	10,9	13,9
Total¹	100,0	100,0	100,0	100,0	100,0	100,0

São Paulo Metropolitan Region, 3rd Quarter 2021 (In %)

Position in occupation	Total population ages 14 and over	Young people aged 14 to 29				
		Total(1)	White men	Black men	White women	Black women
Works and studies	6,6	12,6	13,4	9,7	14,4	11,9
Works and does not study	51,4	40,3	43,8	47,1	34,8	36,7
Looking for work and studying	2,1	6,5	(2)	(2)	(2)	6,4
Looking for work and not studying	8,1	11,3	10,5	10,3	8,3	16,0
Out of the workforce and studying	6,6	21,2	21,1	18,0	29,0	16,1
Out of the workforce and not studying	25,2	8,0	6,0	6,0	7,6	(2)
Total¹	100,0	100,0	100,0	100,0	100,0	100,0

São Paulo Metropolitan Region, 3rd Quarter 2016 (In %)

Position in occupation	Total population ages 14 and over	Young people aged 14 to 29				
		Total(1)	White men	Black men	White women	Black women
Works and studies	5,3	11,6	12,7	9,4	14,2	8,4
Works and does not study	53,6	38,6	40,1	44,9	35,4	34,0
Looking for work and studying	2,1	5,9	5,0	6,1	6,3	6,5
Looking for work and not studying	7,5	11,4	10,0	11,1	9,7	16,4
Out of the workforce and studying	7,7	23,6	27,1	22,7	23,1	19,8
Out of the workforce and not studying	23,7	8,9	5,0	5,8	11,3	14,8
Total¹	100,0	100,0	100,0	100,0	100,0	100,0

Source: IBGE. Continuous Quarterly Pnad

Note: (1) The total includes people of unknown color/race and indigenous people.

(2) The sample does not include a breakdown for this category (maximum CV of 15.0%) Note: a) Black people= black and brown; white people= white and yellow

Estimated distribution of the young population aged 14 to 29 by work and study situation, by age group, sex and color/race

Municipality of São Paulo, 3rd Quarter 2024 (In %)

Position in occupation	Total population ages 14 and over	Young people aged 14 to 29				
		Total(1)	White men	Black men	White women	Black women
Works and studies	7,5	17,5	18,3	16,7	20,1	13,8
Works and does not study	57,0	42,2	44,0	47,8	38,0	38,9
Looking for work and studying	0,9	2,8	(2)	(2)	(2)	(2)
Looking for work and not studying	3,1	4,1	(2)	(2)	(2)	(2)
Out of the workforce and studying	6,8	24,1	27,1	18,2	25,5	26,0
Out of the workforce and not studying	24,8	9,4	(2)	9,1	11,3	13,9
Total¹	100,0	100,0	100,0	100,0	100,0	100,0

Municipality of São Paulo, 3rd Quarter 2023 (In %)

Position in occupation	Total population ages 14 and over	Young people aged 14 to 29				
		Total(1)	White men	Black men	White women	Black women
Works and studies	7,8	16,6	18,5	13,0	19,4	14,7
Works and does not study	55,6	42,6	41,6	51,7	39,4	38,2
Looking for work and studying	1,1	3,6	(2)	(2)	(2)	(2)
Looking for work and not studying	4,1	5,9	(2)	(2)	(2)	(2)
Out of the workforce and studying	6,4	21,7	21,6	19,2	24,1	21,8
Out of the workforce and not studying	25,0	9,5	(2)	(2)	8,8	14,4
Total¹	100,0	100,0	100,0	100,0	100,0	100,0

Municipality of São Paulo, 3rd Quarter 2021 (In %)

Position in occupation	Total population ages 14 and over	Young people aged 14 to 29				
		Total(1)	White men	Black men	White women	Black women
Works and studies	7,4	13,5	(2)	(2)	12,7	13,6
Works and does not study	51,1	39,2	42,0	43,6	37,0	34,1
Looking for work and studying	2,0	6,1	(2)	(2)	(2)	(2)
Looking for work and not studying	7,3	10,9	11,2	(2)	(2)	15,9
Out of the workforce and studying	6,7	22,3	20,9	19,9	30,3	16,7
Out of the workforce and not studying	25,6	8,0	(2)	(2)	(2)	(2)
Total¹	100,0	100,0	100,0	100,0	100,0	100,0

Municipality of São Paulo, 3rd Quarter 2016 (In %)

Position in occupation	Total population ages 14 and over	Young people aged 14 to 29				
		Total(1)	White men	Black men	White women	Black women
Works and studies	5,7	12,4	13,0	(2)	15,3	10,3
Works and does not study	54,3	39,7	41,0	48,8	34,2	36,7
Looking for work and studying	2,1	5,9	(2)	(2)	(2)	(2)
Looking for work and not studying	6,6	9,8	9,2	10,5	7,4	14,4
Out of the workforce and studying	7,5	23,1	25,7	19,4	25,3	18,4
Out of the workforce and not studying	23,7	9,1	(2)	(2)	11,2	14,0
Total¹	100,0	100,0	100,0	100,0	100,0	100,0

Source: IBGE. Continuous Quarterly Pnad

Note: (1) The total includes people of unknown color/race and indigenous people.

(2) The sample does not include a breakdown for this category (maximum CV of 15.0%) Note: a) Black people= black and brown; white people= white and yellow

Estimated distribution of the young population aged 14 to 17 by work and study situation, by age group, sex and color/race

Brazil, 3rd Quarter 2024 (In %)

Position in occupation	Population young people aged 14 to 29	Young people aged 14 to 17				
		Total(1)	White men	Black men	White women	Black women
Works and studies	12,7	10,8	12,5	12,8	10,2	7,7
Works and does not study	40,9	1,5	1,7	2,3	(2)	(2)
Looking for work and studying	2,2	3,7	3,7	3,5	3,2	4,4
Looking for work and not studying	4,7	0,4	(2)	(2)	(2)	(2)
Out of the workforce and studying	25,6	80,7	79,5	78,3	83,0	82,9
Out of the workforce and not studying	13,9	2,9	(2)	2,6	2,5	3,8
Total¹	100,0	100,0	100,0	100,0	100,0	100,0

Brazil, 3rd Quarter 2023 (In %)

Position in occupation	Population young people aged 14 to 29	Young people aged 14 to 17				
		Total(1)	White men	Black men	White women	Black women
Works and studies	12,4	9,4	11,4	10,8	9,8	6,5
Works and does not study	39,6	1,6	1,6	2,6	(2)	(2)
Looking for work and studying	2,6	4,3	3,9	4,5	3,3	5,1
Looking for work and not studying	5,6	0,4	(2)	(2)	(2)	(2)
Out of the workforce and studying	25,5	80,8	80,2	78,5	82,9	82,2
Out of the workforce and not studying	14,4	3,5	(2)	3,1	2,8	4,8
Total¹	100,0	100,0	100,0	100,0	100,0	100,0

Brazil, 3rd Quarter 2021 (In %)

Position in occupation	Population young people aged 14 to 29	Young people aged 14 to 17				
		Total(1)	White men	Black men	White women	Black women
Works and studies	11,3	9,4	11,0	12,6	7,3	6,2
Works and does not study	36,6	1,2	1,5	1,7	(2)	(2)
Looking for work and studying	4,4	6,6	6,4	7,5	5,7	6,2
Looking for work and not studying	9,0	0,6	(2)	(2)	(2)	(2)
Out of the workforce and studying	25,4	79,2	78,0	74,9	82,5	82,6
Out of the workforce and not studying	13,3	3,0	2,7	2,6	3,2	3,6
Total¹	100,0	100,0	100,0	100,0	100,0	100,0

Brazil, 3rd Quarter 2016 (In %)

Position in occupation	Population young people aged 14 to 29	Young people aged 14 to 17				
		Total(1)	White men	Black men	White women	Black women
Works and studies	10,4	9,0	11,1	11,3	7,3	6,1
Works and does not study	36,8	2,4	3,1	3,5	1,6	1,4
Looking for work and studying	4,0	6,2	5,5	6,6	6,1	6,3
Looking for work and not studying	8,7	1,3	1,1	1,4	(2)	1,5
Out of the workforce and studying	25,5	75,4	75,5	72,1	78,6	76,6
Out of the workforce and not studying	14,6	5,8	3,6	5,1	5,4	8,1
Total¹	100,0	100,0	100,0	100,0	100,0	100,0

Source: IBGE. Continuous Quarterly Pnad

Note: (1) The total includes people of unknown color/race and indigenous people.

(2) The sample does not include a breakdown for this category (maximum CV of 15.0%) Note: a) Black people= black and brown; white people= white and yellow

Estimated distribution of the young population aged 14 to 17 by work and study situation, by age group, sex and color/race

State of São Paulo, 3rd Quarter 2024 (In %)

Position in occupation	Population young people aged 14 to 29	Young people aged 14 to 17				
		Total(1)	White men	Black men	White women	Black women
Works and studies	14,1	12,4	(2)	(2)	(2)	(2)
Works and does not study	46,1	(2)	(2)	(2)	(2)	(2)
Looking for work and studying	2,5	5,2	(2)	(2)	(2)	(2)
Looking for work and not studying	5,0	(2)	(2)	(2)	(2)	(2)
Out of the workforce and studying	22,4	78,3	80,3	70,6	83,1	79,2
Out of the workforce and not studying	9,9	(2)	(2)	(2)	(2)	(2)
Total¹	100,0	100,0	100,0	100,0	100,0	100,0

State of São Paulo, 3rd Quarter 2023 (In %)

Position in occupation	Population young people aged 14 to 29	Young people aged 14 to 17				
		Total(1)	White men	Black men	White women	Black women
Works and studies	14,2	10,1	(2)	(2)	(2)	(2)
Works and does not study	45,2	(2)	(2)	(2)	(2)	(2)
Looking for work and studying	3,1	6,8	(2)	(2)	(2)	(2)
Looking for work and not studying	5,4	(2)	(2)	(2)	(2)	(2)
Out of the workforce and studying	22,2	79,5	81,1	79,5	81,3	75,3
Out of the workforce and not studying	9,9	(2)	(2)	(2)	(2)	(2)
Total¹	100,0	100,0	100,0	100,0	100,0	100,0

State of São Paulo, 3rd Quarter 2021 (In %)

Position in occupation	Population young people aged 14 to 29	Young people aged 14 to 17				
		Total(1)	White men	Black men	White women	Black women
Works and studies	11,9	7,8	(2)	(2)	(2)	(2)
Works and does not study	41,4	(2)	(2)	(2)	(2)	(2)
Looking for work and studying	5,4	10,2	(2)	(2)	(2)	(2)
Looking for work and not studying	10,6	(2)	(2)	(2)	(2)	(2)
Out of the workforce and studying	21,9	78,9	78,9	73,2	83,7	79,0
Out of the workforce and not studying	8,8	(2)	(2)	(2)	(2)	(2)
Total¹	100,0	100,0	100,0	100,0	100,0	100,0

State of São Paulo, 3rd Quarter 2016 (In %)

Position in occupation	Population young people aged 14 to 29	Young people aged 14 to 17				
		Total(1)	White men	Black men	White women	Black women
Works and studies	10,8	7,9	8,6	10,2	(2)	(2)
Works and does not study	40,2	(2)	(2)	(2)	(2)	(2)
Looking for work and studying	5,3	8,7	7,1	(2)	(2)	(2)
Looking for work and not studying	10,6	(2)	(2)	(2)	(2)	(2)
Out of the workforce and studying	23,2	75,8	79,0	71,0	78,1	72,9
Out of the workforce and not studying	9,9	4,3	(2)	(2)	(2)	(2)
Total¹	100,0	100,0	100,0	100,0	100,0	100,0

Source: IBGE. Continuous Quarterly Pnad

Note: (1) The total includes people of unknown color/race and indigenous people.

(2) The sample does not include a breakdown for this category (maximum CV of 15.0%) Note: a) Black people= black and brown; white people= white and yellow

Estimated distribution of the young population aged 14 to 17 by work and study situation, by age group, sex and color/race

São Paulo Metropolitan Region, 3rd Quarter 2024 (In %)

Position in occupation	Population young people aged 14 to 29	Young people aged 14 to 17				
		Total(1)	White men	Black men	White women	Black women
Works and studies	15,3	11,2	(2)	(2)	(2)	(2)
Works and does not study	43,2	(2)	(2)	(2)	(2)	(2)
Looking for work and studying	3,0	(2)	(2)	(2)	(2)	(2)
Looking for work and not studying	4,8	(2)	(2)	(2)	(2)	(2)
Out of the workforce and studying	24,0	79,0	(2)	(2)	(2)	(2)
Out of the workforce and not studying	9,6	(2)	(2)	(2)	(2)	(2)
Total¹	100,0	100,0	100,0	100,0	100,0	100,0

São Paulo Metropolitan Region, 3rd Quarter 2023 (In %)

Position in occupation	Population young people aged 14 to 29	Young people aged 14 to 17				
		Total(1)	White men	Black men	White women	Black women
Works and studies	14,7	(2)	(2)	(2)	(2)	(2)
Works and does not study	44,0	(2)	(2)	(2)	(2)	(2)
Looking for work and studying	3,9	8,6	(2)	(2)	(2)	(2)
Looking for work and not studying	6,4	(2)	(2)	(2)	(2)	(2)
Out of the workforce and studying	21,4	79,4	(2)	(2)	(2)	(2)
Out of the workforce and not studying	9,5	(2)	(2)	(2)	(2)	(2)
Total¹	100,0	100,0	100,0	100,0	100,0	100,0

São Paulo Metropolitan Region, 3rd Quarter 2021 (In %)

Position in occupation	Population young people aged 14 to 29	Young people aged 14 to 17				
		Total(1)	White men	Black men	White women	Black women
Works and studies	12,6	(2)	(2)	(2)	(2)	(2)
Works and does not study	40,3	(2)	(2)	(2)	(2)	(2)
Looking for work and studying	6,5	12,8	(2)	(2)	(2)	(2)
Looking for work and not studying	11,3	(2)	(2)	(2)	(2)	(2)
Out of the workforce and studying	21,2	78,4	(2)	(2)	(2)	(2)
Out of the workforce and not studying	8,0	(2)	(2)	(2)	(2)	(2)
Total¹	100,0	100,0	100,0	100,0	100,0	100,0

São Paulo Metropolitan Region, 3rd Quarter 2016 (In %)

Position in occupation	Population young people aged 14 to 29	Young people aged 14 to 17				
		Total(1)	White men	Black men	White women	Black women
Works and studies	11,6	7,7	(2)	(2)	(2)	(2)
Works and does not study	38,6	(2)	(2)	(2)	(2)	(2)
Looking for work and studying	5,9	8,1	(2)	(2)	(2)	(2)
Looking for work and not studying	11,4	(2)	(2)	(2)	(2)	(2)
Out of the workforce and studying	23,6	77,5	84,9	74,1	75,7	72,4
Out of the workforce and not studying	8,9	(2)	(2)	(2)	(2)	(2)
Total¹	100,0	100,0	100,0	100,0	100,0	100,0

Source: IBGE. Continuous Quarterly Pnad

Note: (1) The total includes people of unknown color/race and indigenous people.

(2) The sample does not include a breakdown for this category (maximum CV of 15.0%) Note: a) Black people= black and brown; white people= white and yellow

Estimated distribution of the young population aged 14 to 17 by work and study situation, by age group, sex and color/race

Municipality of São Paulo, 3rd Quarter 2024 (In %)

Position in occupation	Population young people aged 14 to 29	Young people aged 14 to 17				
		Total(1)	White men	Black men	White women	Black women
Works and studies	17,5	(2)	(2)	(2)	(2)	(2)
Works and does not study	42,2	(2)	(2)	(2)	(2)	(2)
Looking for work and studying	2,8	(2)	(2)	(2)	(2)	(2)
Looking for work and not studying	4,1	(2)	(2)	(2)	(2)	(2)
Out of the workforce and studying	24,1	(2)	(2)	(2)	(2)	(2)
Out of the workforce and not studying	9,4	(2)	(2)	(2)	(2)	(2)
Total¹	100,0	100,0	100,0	100,0	100,0	100,0

Municipality of São Paulo, 3rd Quarter 2023 (In %)

Position in occupation	Population young people aged 14 to 29	Young people aged 14 to 17				
		Total(1)	White men	Black men	White women	Black women
Works and studies	16,6	(2)	(2)	(2)	(2)	(2)
Works and does not study	42,6	(2)	(2)	(2)	(2)	(2)
Looking for work and studying	3,6	(2)	(2)	(2)	(2)	(2)
Looking for work and not studying	5,9	(2)	(2)	(2)	(2)	(2)
Out of the workforce and studying	21,7	(2)	(2)	(2)	(2)	(2)
Out of the workforce and not studying	9,5	(2)	(2)	(2)	(2)	(2)
Total¹	100,0	100,0	100,0	100,0	100,0	100,0

Municipality of São Paulo, 3rd Quarter 2021 (In %)

Position in occupation	Population young people aged 14 to 29	Young people aged 14 to 17				
		Total(1)	White men	Black men	White women	Black women
Works and studies	13,5	(2)	(2)	(2)	(2)	(2)
Works and does not study	39,2	(2)	(2)	(2)	(2)	(2)
Looking for work and studying	6,1	(2)	(2)	(2)	(2)	(2)
Looking for work and not studying	10,9	(2)	(2)	(2)	(2)	(2)
Out of the workforce and studying	22,3	(2)	(2)	(2)	(2)	(2)
Out of the workforce and not studying	8,0	(2)	(2)	(2)	(2)	(2)
Total¹	100,0	100,0	100,0	100,0	100,0	100,0

Municipality of São Paulo, 3rd Quarter 2016 (In %)

Position in occupation	Population young people aged 14 to 29	Young people aged 14 to 17				
		Total(1)	White men	Black men	White women	Black women
Works and studies	12,4	(2)	(2)	(2)	(2)	(2)
Works and does not study	39,7	(2)	(2)	(2)	(2)	(2)
Looking for work and studying	5,9	(2)	(2)	(2)	(2)	(2)
Looking for work and not studying	9,8	(2)	(2)	(2)	(2)	(2)
Out of the workforce and studying	23,1	76,3	81,9	75,4	76,4	67,0
Out of the workforce and not studying	9,1	(2)	(2)	(2)	(2)	(2)
Total¹	100,0	100,0	100,0	100,0	100,0	100,0

Source: IBGE. Continuous Quarterly Pnad

Note: (1) The total includes people of unknown color/race and indigenous people.

(2) The sample does not include a breakdown for this category (maximum CV of 15.0%) Note: a) Black people= black and brown; white people= white and yellow

Estimated distribution of the young population aged 18 to 24 by work and study situation, by age group, sex and color/race

Brazil, 3rd Quarter 2024 (In %)

Position in occupation	Population young people aged 14 to 29	Young people aged 18 to 24				
		Total(1)	White men	Black men	White women	Black women
Works and studies	12,7	15,8	18,5	13,0	21,1	13,5
Works and does not study	40,9	44,1	50,3	54,3	35,9	34,5
Looking for work and studying	2,2	2,6	2,5	2,4	2,6	2,7
Looking for work and not studying	4,7	6,7	5,0	7,1	5,7	8,2
Out of the workforce and studying	25,6	13,5	14,0	10,2	17,6	14,0
Out of the workforce and not studying	13,9	17,4	9,7	13,0	17,2	27,1
Total¹	100,0	100,0	100,0	100,0	100,0	100,0

Brazil, 3rd Quarter 2023 (In %)

Position in occupation	Population young people aged 14 to 29	Young people aged 18 to 24				
		Total(1)	White men	Black men	White women	Black women
Works and studies	12,4	15,5	18,5	12,3	20,2	13,7
Works and does not study	39,6	42,2	47,5	53,0	34,2	32,8
Looking for work and studying	2,6	3,1	3,0	2,8	3,2	3,2
Looking for work and not studying	5,6	8,0	6,3	8,8	7,3	8,7
Out of the workforce and studying	25,5	13,1	14,5	10,1	16,1	13,5
Out of the workforce and not studying	14,4	18,1	10,2	13,0	19,0	28,0
Total¹	100,0	100,0	100,0	100,0	100,0	100,0

Brazil, 3rd Quarter 2021 (In %)

Position in occupation	Population young people aged 14 to 29	Young people aged 18 to 24				
		Total(1)	White men	Black men	White women	Black women
Works and studies	11,3	14,1	17,0	12,3	17,7	11,4
Works and does not study	36,6	37,8	44,6	47,4	29,3	29,1
Looking for work and studying	4,4	5,4	5,0	5,3	5,3	5,9
Looking for work and not studying	9,0	12,6	10,1	12,3	12,1	14,8
Out of the workforce and studying	25,4	13,8	13,3	11,1	18,6	13,9
Out of the workforce and not studying	13,3	16,3	10,0	11,6	17,0	24,9
Total¹	100,0	100,0	100,0	100,0	100,0	100,0

Brazil, 3rd Quarter 2016 (In %)

Position in occupation	Population young people aged 14 to 29	Young people aged 18 to 24				
		Total(1)	White men	Black men	White women	Black women
Works and studies	10,4	12,8	16,7	11,3	15,5	9,7
Works and does not study	36,8	38,4	45,1	47,3	32,7	28,8
Looking for work and studying	4,0	4,7	4,9	4,5	5,2	4,6
Looking for work and not studying	8,7	12,4	10,5	13,7	10,5	13,9
Out of the workforce and studying	25,5	13,6	13,6	11,5	16,5	13,7
Out of the workforce and not studying	14,6	18,0	9,2	11,7	19,5	29,3
Total¹	100,0	100,0	100,0	100,0	100,0	100,0

Source: IBGE. Continuous Quarterly Pnad

Note: (1) The total includes people of unknown color/race and indigenous people.

(2) The sample does not include a breakdown for this category (maximum CV of 15.0%) Note: a) Black people= black and brown; white people= white and yellow

Estimated distribution of the young population aged 18 to 24 by work and study situation, by age group, sex and color/race

State of São Paulo, 3rd Quarter 2024 (In %)

Position in occupation	Population young people aged 14 to 29	Young people aged 18 to 24				
		Total(1)	White men	Black men	White women	Black women
Works and studies	14,1	18,5	17,5	16,1	23,6	16,0
Works and does not study	46,1	51,3	55,4	59,5	42,5	47,0
Looking for work and studying	2,5	2,3	(2)	(2)	(2)	(2)
Looking for work and not studying	5,0	7,3	5,0	8,2	6,5	10,0
Out of the workforce and studying	22,4	8,9	12,0	(2)	13,6	5,4
Out of the workforce and not studying	9,9	11,7	7,4	10,9	11,2	19,1
Total¹	100,0	100,0	100,0	100,0	100,0	100,0

State of São Paulo, 3rd Quarter 2023 (In %)

Position in occupation	Population young people aged 14 to 29	Young people aged 18 to 24				
		Total(1)	White men	Black men	White women	Black women
Works and studies	14,2	18,6	20,3	15,1	20,8	17,5
Works and does not study	45,2	49,4	49,5	59,7	42,3	46,5
Looking for work and studying	3,1	3,1	(2)	(2)	(2)	(2)
Looking for work and not studying	5,4	8,2	6,1	8,3	8,5	10,2
Out of the workforce and studying	22,2	8,6	11,5	(2)	10,8	7,2
Out of the workforce and not studying	9,9	12,1	8,3	10,5	14,7	15,9
Total¹	100,0	100,0	100,0	100,0	100,0	100,0

State of São Paulo, 3rd Quarter 2021 (In %)

Position in occupation	Population young people aged 14 to 29	Young people aged 18 to 24				
		Total(1)	White men	Black men	White women	Black women
Works and studies	11,9	15,3	18,0	9,2	19,0	13,1
Works and does not study	41,4	43,5	46,3	55,9	33,6	40,4
Looking for work and studying	5,4	6,0	(2)	(2)	(2)	(2)
Looking for work and not studying	10,6	15,0	11,6	14,8	14,4	19,6
Out of the workforce and studying	21,9	9,3	8,9	(2)	16,6	(2)
Out of the workforce and not studying	8,8	10,9	9,5	8,1	11,2	15,4
Total¹	100,0	100,0	100,0	100,0	100,0	100,0

State of São Paulo, 3rd Quarter 2016 (In %)

Position in occupation	Population young people aged 14 to 29	Young people aged 18 to 24				
		Total(1)	White men	Black men	White women	Black women
Works and studies	10,8	13,7	17,6	9,8	15,4	9,8
Works and does not study	40,2	42,0	42,5	52,1	38,7	35,9
Looking for work and studying	5,3	6,4	6,3	(2)	7,6	(2)
Looking for work and not studying	10,6	15,6	13,9	16,4	12,5	21,5
Out of the workforce and studying	23,2	10,0	11,5	(2)	11,8	6,5
Out of the workforce and not studying	9,9	12,2	8,2	7,8	14,0	20,1
Total¹	100,0	100,0	100,0	100,0	100,0	100,0

Source: IBGE. Continuous Quarterly Pnad

Note: (1) The total includes people of unknown color/race and indigenous people.

(2) The sample does not include a breakdown for this category (maximum CV of 15.0%) Note: a) Black people= black and brown; white people= white and yellow

Estimated distribution of the young population aged 18 to 24 by work and study situation, by age group, sex and color/race

São Paulo Metropolitan Region, 3rd Quarter 2024 (In %)

Position in occupation	Population young people aged 14 to 29	Young people aged 18 to 24				
		Total(1)	White men	Black men	White women	Black women
Works and studies	15,3	20,8	20,0	20,7	25,4	16,6
Works and does not study	43,2	47,1	48,7	50,6	43,2	45,8
Looking for work and studying	3,0	3,5	(2)	(2)	(2)	(2)
Looking for work and not studying	4,8	7,2	(2)	(2)	(2)	(2)
Out of the workforce and studying	24,0	10,3	(2)	(2)	(2)	(2)
Out of the workforce and not studying	9,6	11,2	(2)	(2)	(2)	(2)
Total¹	100,0	100,0	100,0	100,0	100,0	100,0

São Paulo Metropolitan Region, 3rd Quarter 2023 (In %)

Position in occupation	Population young people aged 14 to 29	Young people aged 18 to 24				
		Total(1)	White men	Black men	White women	Black women
Works and studies	14,7	19,3	19,9	(2)	23,3	18,1
Works and does not study	44,0	45,7	46,3	56,7	37,8	42,1
Looking for work and studying	3,9	4,0	(2)	(2)	(2)	(2)
Looking for work and not studying	6,4	9,9	(2)	(2)	(2)	(2)
Out of the workforce and studying	21,4	8,3	(2)	(2)	(2)	(2)
Out of the workforce and not studying	9,5	12,8	(2)	(2)	(2)	(2)
Total¹	100,0	100,0	100,0	100,0	100,0	100,0

São Paulo Metropolitan Region, 3rd Quarter 2021 (In %)

Position in occupation	Population young people aged 14 to 29	Young people aged 18 to 24				
		Total(1)	White men	Black men	White women	Black women
Works and studies	12,6	16,7	19,8	(2)	19,6	(2)
Works and does not study	40,3	40,4	40,9	50,7	33,8	37,6
Looking for work and studying	6,5	7,7	(2)	(2)	(2)	(2)
Looking for work and not studying	11,3	15,3	(2)	(2)	(2)	20,5
Out of the workforce and studying	21,2	9,5	(2)	(2)	(2)	(2)
Out of the workforce and not studying	8,0	10,4	(2)	(2)	(2)	(2)
Total¹	100,0	100,0	100,0	100,0	100,0	100,0

São Paulo Metropolitan Region, 3rd Quarter 2016 (In %)

Position in occupation	Population young people aged 14 to 29	Young people aged 18 to 24				
		Total(1)	White men	Black men	White women	Black women
Works and studies	11,6	15,3	18,6	(2)	19,6	(2)
Works and does not study	38,6	38,2	36,2	50,1	32,9	35,9
Looking for work and studying	5,9	8,0	(2)	(2)	9,6	(2)
Looking for work and not studying	11,4	16,5	15,7	17,8	13,2	20,8
Out of the workforce and studying	23,6	11,1	14,5	(2)	13,0	(2)
Out of the workforce and not studying	8,9	10,9	(2)	(2)	11,8	18,1
Total¹	100,0	100,0	100,0	100,0	100,0	100,0

Source: IBGE. Continuous Quarterly Pnad

Note: (1) The total includes people of unknown color/race and indigenous people.

(2) The sample does not include a breakdown for this category (maximum CV of 15.0%) Note: a) Black people= black and brown; white people= white and yellow

Estimated distribution of the young population aged 18 to 24 by work and study situation, by age group, sex and color/race

Municipality of São Paulo, 3rd Quarter 2024 (In %)

Position in occupation	Population young people aged 14 to 29	Young people aged 18 to 24				
		Total(1)	White men	Black men	White women	Black women
Works and studies	17,5	24,3	(2)	(2)	(2)	(2)
Works and does not study	42,2	43,3	44,1	44,4	38,9	47,6
Looking for work and studying	2,8	(2)	(2)	(2)	(2)	(2)
Looking for work and not studying	4,1	(2)	(2)	(2)	(2)	(2)
Out of the workforce and studying	24,1	11,5	(2)	(2)	(2)	(2)
Out of the workforce and not studying	9,4	11,5	(2)	(2)	(2)	(2)
Total¹	100,0	100,0	100,0	100,0	100,0	100,0

Municipality of São Paulo, 3rd Quarter 2023 (In %)

Position in occupation	Population young people aged 14 to 29	Young people aged 18 to 24				
		Total(1)	White men	Black men	White women	Black women
Works and studies	16,6	20,9	(2)	(2)	(2)	(2)
Works and does not study	42,6	44,3	42,1	58,2	36,9	42,1
Looking for work and studying	3,6	(2)	(2)	(2)	(2)	(2)
Looking for work and not studying	5,9	(2)	(2)	(2)	(2)	(2)
Out of the workforce and studying	21,7	(2)	(2)	(2)	(2)	(2)
Out of the workforce and not studying	9,5	11,8	(2)	(2)	(2)	(2)
Total¹	100,0	100,0	100,0	100,0	100,0	100,0

Municipality of São Paulo, 3rd Quarter 2021 (In %)

Position in occupation	Population young people aged 14 to 29	Young people aged 18 to 24				
		Total(1)	White men	Black men	White women	Black women
Works and studies	13,5	18,0	(2)	(2)	(2)	(2)
Works and does not study	39,2	35,8	35,7	41,9	32,9	34,3
Looking for work and studying	6,1	(2)	(2)	(2)	(2)	(2)
Looking for work and not studying	10,9	14,2	(2)	(2)	(2)	(2)
Out of the workforce and studying	22,3	(2)	(2)	(2)	(2)	(2)
Out of the workforce and not studying	8,0	10,7	(2)	(2)	(2)	(2)
Total¹	100,0	100,0	100,0	100,0	100,0	100,0

Municipality of São Paulo, 3rd Quarter 2016 (In %)

Position in occupation	Population young people aged 14 to 29	Young people aged 18 to 24				
		Total(1)	White men	Black men	White women	Black women
Works and studies	12,4	16,6	19,3	(2)	20,2	(2)
Works and does not study	39,7	38,2	35,1	53,5	31,9	37,9
Looking for work and studying	5,9	8,1	(2)	(2)	(2)	(2)
Looking for work and not studying	9,8	13,7	(2)	15,5	(2)	(2)
Out of the workforce and studying	23,1	12,5	16,1	(2)	(2)	(2)
Out of the workforce and not studying	9,1	10,9	(2)	(2)	11,6	17,3
Total¹	100,0	100,0	100,0	100,0	100,0	100,0

Source: IBGE. Continuous Quarterly Pnad

Note: (1) The total includes people of unknown color/race and indigenous people.

(2) The sample does not include a breakdown for this category (maximum CV of 15.0%) Note: a) Black people= black and brown; white people= white and yellow

Estimated distribution of the young population aged 25 to 29 by work and study situation, by age group, sex and color/race

Brazil, 3rd Quarter 2024 (In %)

Position in occupation	Population young people aged 14 to 29	Young people aged 25 to 29				
		Total(1)	White men	Black men	White women	Black women
Works and studies	12,7	10,0	11,8	7,2	13,3	9,4
Works and does not study	40,9	64,4	73,7	77,2	57,3	50,0
Looking for work and studying	2,2	0,8	(2)	(2)	(2)	(2)
Looking for work and not studying	4,7	5,3	4,3	5,5	4,4	6,3
Out of the workforce and studying	25,6	2,5	2,5	1,2	3,6	3,0
Out of the workforce and not studying	13,9	17,1	6,7	8,3	20,7	30,4
Total¹	100,0	100,0	100,0	100,0	100,0	100,0

Brazil, 3rd Quarter 2023 (In %)

Position in occupation	Population young people aged 14 to 29	Young people aged 25 to 29				
		Total(1)	White men	Black men	White women	Black women
Works and studies	12,4	10,4	12,8	8,0	13,2	9,4
Works and does not study	39,6	62,8	71,6	73,9	57,9	49,2
Looking for work and studying	2,6	0,9	(2)	(2)	(2)	(2)
Looking for work and not studying	5,6	6,0	4,5	6,3	4,8	7,5
Out of the workforce and studying	25,5	2,8	2,8	1,7	3,8	3,0
Out of the workforce and not studying	14,4	17,1	7,3	9,4	19,4	30,0
Total¹	100,0	100,0	100,0	100,0	100,0	100,0

Brazil, 3rd Quarter 2021 (In %)

Position in occupation	Population young people aged 14 to 29	Young people aged 25 to 29				
		Total(1)	White men	Black men	White women	Black women
Works and studies	11,3	8,9	10,5	7,2	11,7	7,5
Works and does not study	36,6	60,3	71,8	71,3	53,3	46,2
Looking for work and studying	4,4	1,4	(2)	1,1	1,8	1,5
Looking for work and not studying	9,0	10,2	8,2	9,7	9,1	12,8
Out of the workforce and studying	25,4	2,5	2,2	1,9	3,8	2,5
Out of the workforce and not studying	13,3	16,7	5,9	8,9	20,3	29,6
Total¹	100,0	100,0	100,0	100,0	100,0	100,0

Brazil, 3rd Quarter 2016 (In %)

Position in occupation	Population young people aged 14 to 29	Young people aged 25 to 29				
		Total(1)	White men	Black men	White women	Black women
Works and studies	10,4	8,2	10,0	6,4	10,8	6,8
Works and does not study	36,8	61,7	72,8	72,8	55,9	46,4
Looking for work and studying	4,0	1,3	1,2	1,1	1,4	1,7
Looking for work and not studying	8,7	9,4	8,3	10,4	7,7	10,6
Out of the workforce and studying	25,5	2,6	2,5	1,5	3,6	3,0
Out of the workforce and not studying	14,6	16,8	5,3	7,9	20,6	31,6
Total¹	100,0	100,0	100,0	100,0	100,0	100,0

Source: IBGE. Continuous Quarterly Pnad

Note: (1) The total includes people of unknown color/race and indigenous people.

(2) The sample does not include a breakdown for this category (maximum CV of 15.0%)

Note: a) Black people= black and brown; white people= white and yellow

Estimated distribution of the young population aged 25 to 29 by work and study situation, by age group, sex and color/race

State of São Paulo, 3rd Quarter 2024 (In %)

Position in occupation	Population young people aged 14 to 29	Young people aged 25 to 29				
		Total(1)	White men	Black men	White women	Black women
Works and studies	14,1	9,9	12,8	(2)	11,9	(2)
Works and does not study	46,1	69,5	73,6	80,8	62,5	59,8
Looking for work and studying	2,5	(2)	(2)	(2)	(2)	(2)
Looking for work and not studying	5,0	(2)	(2)	(2)	(2)	(2)
Out of the workforce and studying	22,4	(2)	(2)	(2)	(2)	(2)
Out of the workforce and not studying	9,9	12,9	(2)	(2)	17,0	24,3
Total¹	100,0	100,0	100,0	100,0	100,0	100,0

State of São Paulo, 3rd Quarter 2023 (In %)

Position in occupation	Population young people aged 14 to 29	Young people aged 25 to 29				
		Total(1)	White men	Black men	White women	Black women
Works and studies	14,2	11,3	13,6	(2)	12,0	(2)
Works and does not study	45,2	68,5	73,3	77,7	63,6	58,5
Looking for work and studying	3,1	(2)	(2)	(2)	(2)	(2)
Looking for work and not studying	5,4	(2)	(2)	(2)	(2)	(2)
Out of the workforce and studying	22,2	(2)	(2)	(2)	(2)	(2)
Out of the workforce and not studying	9,9	12,4	(2)	(2)	16,0	22,8
Total¹	100,0	100,0	100,0	100,0	100,0	100,0

State of São Paulo, 3rd Quarter 2021 (In %)

Position in occupation	Population young people aged 14 to 29	Young people aged 25 to 29				
		Total(1)	White men	Black men	White women	Black women
Works and studies	11,9	10,0	(2)	(2)	12,1	(2)
Works and does not study	41,4	65,1	73,9	75,4	56,7	54,7
Looking for work and studying	5,4	(2)	(2)	(2)	(2)	(2)
Looking for work and not studying	10,6	11,6	11,4	(2)	(2)	14,4
Out of the workforce and studying	21,9	(2)	(2)	(2)	(2)	(2)
Out of the workforce and not studying	8,8	10,7	(2)	(2)	15,5	20,4
Total¹	100,0	100,0	100,0	100,0	100,0	100,0

State of São Paulo, 3rd Quarter 2016 (In %)

Position in occupation	Population young people aged 14 to 29	Young people aged 25 to 29				
		Total(1)	White men	Black men	White women	Black women
Works and studies	10,8	9,2	10,8	(2)	12,2	(2)
Works and does not study	40,2	65,8	72,9	76,1	57,5	55,8
Looking for work and studying	5,3	(2)	(2)	(2)	(2)	(2)
Looking for work and not studying	10,6	11,0	10,1	10,6	9,3	16,5
Out of the workforce and studying	23,2	(2)	(2)	(2)	(2)	(2)
Out of the workforce and not studying	9,9	11,1	(2)	(2)	17,3	20,1
Total¹	100,0	100,0	100,0	100,0	100,0	100,0

Source: IBGE. Continuous Quarterly Pnad

Note: (1) The total includes people of unknown color/race and indigenous people.

(2) The sample does not include a breakdown for this category (maximum CV of 15.0%)

Note: a) Black people= black and brown; white people= white and yellow

Estimated distribution of the young population aged 25 to 29 by work and study situation, by age group, sex and color/race

São Paulo Metropolitan Region, 3rd Quarter 2024 (In %)

Position in occupation	Population young people aged 14 to 29	Young people aged 25 to 29				
		Total(1)	White men	Black men	White women	Black women
Works and studies	15,3	11,7	(2)	(2)	(2)	(2)
Works and does not study	43,2	67,9	71,1	80,3	60,3	58,3
Looking for work and studying	3,0	(2)	(2)	(2)	(2)	(2)
Looking for work and not studying	4,8	(2)	(2)	(2)	(2)	(2)
Out of the workforce and studying	24,0	(2)	(2)	(2)	(2)	(2)
Out of the workforce and not studying	9,6	12,7	(2)	(2)	(2)	(2)
Total¹	100,0	100,0	100,0	100,0	100,0	100,0

São Paulo Metropolitan Region, 3rd Quarter 2023 (In %)

Position in occupation	Population young people aged 14 to 29	Young people aged 25 to 29				
		Total(1)	White men	Black men	White women	Black women
Works and studies	14,7	12,9	(2)	(2)	(2)	(2)
Works and does not study	44,0	68,5	71,7	77,3	64,7	59,2
Looking for work and studying	3,9	(2)	(2)	(2)	(2)	(2)
Looking for work and not studying	6,4	(2)	(2)	(2)	(2)	(2)
Out of the workforce and studying	21,4	(2)	(2)	(2)	(2)	(2)
Out of the workforce and not studying	9,5	10,1	(2)	(2)	(2)	(2)
Total¹	100,0	100,0	100,0	100,0	100,0	100,0

São Paulo Metropolitan Region, 3rd Quarter 2021 (In %)

Position in occupation	Population young people aged 14 to 29	Young people aged 25 to 29				
		Total(1)	White men	Black men	White women	Black women
Works and studies	12,6	11,3	(2)	(2)	(2)	(2)
Works and does not study	40,3	64,4	72,1	73,9	59,5	53,7
Looking for work and studying	6,5	(2)	(2)	(2)	(2)	(2)
Looking for work and not studying	11,3	12,7	(2)	(2)	(2)	(2)
Out of the workforce and studying	21,2	(2)	(2)	(2)	(2)	(2)
Out of the workforce and not studying	8,0	8,9	(2)	(2)	(2)	(2)
Total¹	100,0	100,0	100,0	100,0	100,0	100,0

São Paulo Metropolitan Region, 3rd Quarter 2016 (In %)

Position in occupation	Population young people aged 14 to 29	Young people aged 25 to 29				
		Total(1)	White men	Black men	White women	Black women
Works and studies	11,6	9,6	(2)	(2)	12,4	(2)
Works and does not study	38,6	65,0	72,4	72,1	58,7	54,9
Looking for work and studying	5,9	(2)	(2)	(2)	(2)	(2)
Looking for work and not studying	11,4	12,1	(2)	(2)	11,1	(2)
Out of the workforce and studying	23,6	(2)	(2)	(2)	(2)	(2)
Out of the workforce and not studying	8,9	9,7	(2)	(2)	13,7	(2)
Total¹	100,0	100,0	100,0	100,0	100,0	100,0

Source: IBGE. Continuous Quarterly Pnad

Note: (1) The total includes people of unknown color/race and indigenous people.

(2) The sample does not include a breakdown for this category (maximum CV of 15.0%)

Note: a) Black people= black and brown; white people= white and yellow

Estimated distribution of the young population aged 25 to 29 by work and study situation, by age group, sex and color/race

Municipality of São Paulo, 3rd Quarter 2024 (In %)

Position in occupation	Population young people aged 14 to 29	Young people aged 25 to 29				
		Total(1)	White men	Black men	White women	Black women
Works and studies	17,5	13,7	(2)	(2)	(2)	(2)
Works and does not study	42,2	67,2	71,2	77,0	59,8	59,2
Looking for work and studying	2,8	(2)	(2)	(2)	(2)	(2)
Looking for work and not studying	4,1	(2)	(2)	(2)	(2)	(2)
Out of the workforce and studying	24,1	(2)	(2)	(2)	(2)	(2)
Out of the workforce and not studying	9,4	(2)	(2)	(2)	(2)	(2)
Total¹	100,0	100,0	100,0	100,0	100,0	100,0

Municipality of São Paulo, 3rd Quarter 2023 (In %)

Position in occupation	Population young people aged 14 to 29	Young people aged 25 to 29				
		Total(1)	White men	Black men	White women	Black women
Works and studies	16,6	15,7	(2)	(2)	(2)	(2)
Works and does not study	42,6	65,2	64,9	72,9	64,7	57,9
Looking for work and studying	3,6	(2)	(2)	(2)	(2)	(2)
Looking for work and not studying	5,9	(2)	(2)	(2)	(2)	(2)
Out of the workforce and studying	21,7	(2)	(2)	(2)	(2)	(2)
Out of the workforce and not studying	9,5	(2)	(2)	(2)	(2)	(2)
Total¹	100,0	100,0	100,0	100,0	100,0	100,0

Municipality of São Paulo, 3rd Quarter 2021 (In %)

Position in occupation	Population young people aged 14 to 29	Young people aged 25 to 29				
		Total(1)	White men	Black men	White women	Black women
Works and studies	13,5	13,0	(2)	(2)	(2)	(2)
Works and does not study	39,2	63,6	67,8	71,0	63,2	(2)
Looking for work and studying	6,1	(2)	(2)	(2)	(2)	(2)
Looking for work and not studying	10,9	12,6	(2)	(2)	(2)	(2)
Out of the workforce and studying	22,3	(2)	(2)	(2)	(2)	(2)
Out of the workforce and not studying	8,0	(2)	(2)	(2)	(2)	(2)
Total¹	100,0	100,0	100,0	100,0	100,0	100,0

Municipality of São Paulo, 3rd Quarter 2016 (In %)

Position in occupation	Population young people aged 14 to 29	Young people aged 25 to 29				
		Total(1)	White men	Black men	White women	Black women
Works and studies	12,4	10,0	(2)	(2)	(2)	(2)
Works and does not study	39,7	65,5	73,1	71,7	56,0	60,2
Looking for work and studying	5,9	(2)	(2)	(2)	(2)	(2)
Looking for work and not studying	9,8	10,6	(2)	(2)	(2)	(2)
Out of the workforce and studying	23,1	(2)	(2)	(2)	(2)	(2)
Out of the workforce and not studying	9,1	10,0	(2)	(2)	(2)	(2)
Total¹	100,0	100,0	100,0	100,0	100,0	100,0

Source: IBGE. Continuous Quarterly Pnad

Note: (1) The total includes people of unknown color/race and indigenous people.

(2) The sample does not include a breakdown for this category (maximum CV of 15.0%)

Note: a) Black people= black and brown; white people= white and yellow

Proportion of young people aged 15 to 17 who attend or have completed at least secondary school, by sex and color/race

Brazil, State, Metropolitan Region and Municipality of São Paulo, 3rd Quarter 2024 (In %)

Sex and color/race	Brazil	State of São Paulo	Metropolitan Region of São Paulo	Municipality of São Paulo
Black women	72,9	77,1	79,0	72,7
White women	80,8	84,5	84,8	90,6
Black men	66,8	69,5	73,8	72,0
White men	76,0	80,3	78,1	74,4
Total¹	73,1	78,1	78,9	77,3

Brazil, State, Metropolitan Region and Municipality of São Paulo, 3rd Quarter 2023 (In %)

Sex and color/race	Brazil	State of São Paulo	Metropolitan Region of São Paulo	Municipality of São Paulo
Black women	70,9	78,1	77,3	77,8
White women	79,4	83,9	85,0	86,0
Black men	63,7	76,0	72,2	72,7
White men	74,2	81,1	85,7	80,9
Total¹	70,8	80,0	79,8	79,6

Brazil, State, Metropolitan Region and Municipality of São Paulo, 3rd Quarter 2021 (In %)

Sex and color/race	Brazil	State of São Paulo	Metropolitan Region of São Paulo	Municipality of São Paulo
Black women	68,8	77,1	81,1	83,9
White women	76,2	79,6	75,0	74,0
Black men	61,0	73,8	68,9	69,4
White men	71,4	82,4	75,9	72,2
Total¹	68,2	78,4	74,8	74,6

Brazil, State, Metropolitan Region and Municipality of São Paulo, 3rd Quarter 2016 (In %)

Sex and color/race	Brazil	State of São Paulo	Metropolitan Region of São Paulo	Municipality of São Paulo
Black women	65,1	77,2	82,0	76,5
White women	76,1	86,2	88,3	86,8
Black men	54,5	80,3	83,4	83,7
White men	70,8	86,9	88,1	88,0
Total¹	65,0	83,4	85,9	84,7

Source: IBGE. Continuous Quarterly Pnad

Note: (1) The total includes people of unknown color/race and indigenous people.

(2) The sample does not include a breakdown for this category (maximum CV of 15.0%)

Note: a) Black people= black and brown; white people= white and yellow

Proportion of young people aged 18 to 24 attending or having completed at least secondary school, by sex and color/race

Brazil, State, Metropolitan Region and Municipality of São Paulo, 3rd Quarter 2024 (In %)

Sex and color/race	Brazil	State of São Paulo	Metropolitan Region of São Paulo	Municipality of São Paulo
Black women	24,5	24,2	25,8	27,5
White women	43,6	47,3	52,8	60,0
Black men	16,8	19,1	(2)	(2)
White men	32,7	34,3	42,1	49,7
Total¹	27,4	31,9	36,8	42,6

Brazil, State, Metropolitan Region and Municipality of São Paulo, 3rd Quarter 2023 (In %)

Sex and color/race	Brazil	State of São Paulo	Metropolitan Region of São Paulo	Municipality of São Paulo
Black women	23,4	27,3	30,1	36,5
White women	39,8	43,6	48,6	52,2
Black men	15,6	16,2	(2)	(2)
White men	32,8	38,7	43,6	51,3
Total¹	26,0	32,2	35,2	41,4

Brazil, State, Metropolitan Region and Municipality of São Paulo, 3rd Quarter 2021 (In %)

Sex and color/race	Brazil	State of São Paulo	Metropolitan Region of São Paulo	Municipality of São Paulo
Black women	21,4	22,8	26,6	29,4
White women	40,5	47,1	57,3	58,9
Black men	15,6	15,8	(2)	(2)
White men	30,4	33,9	33,8	39,3
Total¹	25,1	30,9	34,2	38,2

Brazil, State, Metropolitan Region and Municipality of São Paulo, 3rd Quarter 2016 (In %)

Sex and color/race	Brazil	State of São Paulo	Metropolitan Region of São Paulo	Municipality of São Paulo
Black women	18,7	20,1	22,7	22,4
White women	36,6	39,6	47,5	49,2
Black men	12,8	13,2	14,1	(2)
White men	29,4	34,3	39,5	41,7
Total¹	22,8	28,5	32,7	34,3

Source: IBGE. Continuous Quarterly Pnad

Note: (1) The total includes people of unknown color/race and indigenous people.

(2) The sample does not include a breakdown for this category (maximum CV of 15.0%) Note:

a) Black people= black and brown; white people= white and yellow

Number of years of study of young people aged 14 to 29, by sex and color/race

Brazil, State, Metropolitan Region and Municipality of São Paulo, 3rd Quarter 2024 (In years)

Sex and color/race	Brazil	State of São Paulo	Metropolitan Region of São Paulo	Municipality of São Paulo
Black women	11,1	11,3	11,3	11,4
White women	11,9	12,2	12,3	12,7
Black men	10,5	10,9	10,9	11,2
White men	11,4	11,8	12,0	12,1
Total¹	11,1	11,5	11,6	11,9

Brazil, State, Metropolitan Region and Municipality of São Paulo, 3rd Quarter 2023 (In years)

Sex and color/race	Brazil	State of São Paulo	Metropolitan Region of São Paulo	Municipality of São Paulo
Black women	11,0	11,4	11,6	11,6
White women	11,8	12,0	12,3	12,6
Black men	10,4	10,9	10,8	11,1
White men	11,4	11,8	12,2	12,3
Total¹	11,1	11,6	11,7	11,9

Brazil, State, Metropolitan Region and Municipality of São Paulo, 3rd Quarter 2021 (In years)

Sex and color/race	Brazil	State of São Paulo	Metropolitan Region of São Paulo	Municipality of São Paulo
Black women	10,8	11,3	11,5	11,4
White women	11,7	12,0	12,2	12,4
Black men	10,3	10,9	11,0	11,1
White men	11,3	11,8	12,0	12,4
Total¹	10,9	11,5	11,7	11,9

Brazil, State, Metropolitan Region and Municipality of São Paulo, 3rd Quarter 2016 (In %)

Sex and color/race	Brazil	State of São Paulo	Metropolitan Region of São Paulo	Municipality of São Paulo
Black women	10,4	11,0	11,2	11,1
White women	11,5	12,0	12,2	12,2
Black men	9,6	10,6	10,7	10,7
White men	11,0	11,6	11,8	12,0
Total¹	10,5	11,4	11,6	11,6

Source: IBGE. Continuous Quarterly Pnad

Note: (1) The total includes people of unknown color/race and indigenous people.

(2) The sample does not include a breakdown for this category (maximum CV of 15.0%)

Note: a) Black people= black and brown; white people= white and yellow

Number of years of study of the working-age population, by sex and color/race

Brazil, State, Metropolitan Region and Municipality of São Paulo, 3rd Quarter 2024 (In years)

Sex and color/race	Brazil	State of São Paulo	Metropolitan Region of São Paulo	Municipality of São Paulo
Black women	9,8	10,1	10,3	10,5
White women	11,1	11,6	12,0	12,2
Black men	9,3	10,1	10,4	10,6
White men	10,9	11,6	12,2	12,4
Total¹	10,2	11,0	11,3	11,5

Brazil, State, Metropolitan Region and Municipality of São Paulo, 3rd Quarter 2023 (In years)

Sex and color/race	Brazil	State of São Paulo	Metropolitan Region of São Paulo	Municipality of São Paulo
Black women	9,7	10,1	10,4	10,6
White women	11,0	11,5	12,0	12,3
Black men	9,2	10,1	10,3	10,6
White men	10,8	11,6	12,2	12,6
Total¹	10,1	11,0	11,3	11,7

Brazil, State, Metropolitan Region and Municipality of São Paulo, 3rd Quarter 2021 (In years)

Sex and color/race	Brazil	State of São Paulo	Metropolitan Region of São Paulo	Municipality of São Paulo
Black women	9,6	10,1	10,6	10,6
White women	10,9	11,4	11,9	12,3
Black men	9,1	10,0	10,3	10,4
White men	10,7	11,5	12,1	12,6
Total¹	10,0	10,9	11,3	11,7

Brazil, State, Metropolitan Region and Municipality of São Paulo, 3rd Quarter 2016 (In %)

Sex and color/race	Brazil	State of São Paulo	Metropolitan Region of São Paulo	Municipality of São Paulo
Black women	8,8	9,5	9,8	9,8
White women	10,4	11,0	11,5	11,7
Black men	8,3	9,5	9,8	9,8
White men	10,2	11,1	11,8	12,1
Total¹	9,4	10,5	10,9	11,1

Source: IBGE. Continuous Quarterly Pnad

Note: (1) The total includes people of unknown color/race and indigenous people.

(2) The sample does not include a breakdown for this category (maximum CV of 15.0%)

Note: a) Black people= black and brown; white people= white and yellow

Estimated proportion of working-age people who did household chores in their own home or in a relative's home, by age group, sex and color/race

Brazil, 2022 (In %)

Sex and color/race	Total population aged 14 and over	Young people aged 14 to 29	14 a 17 years	18 a 24 years	25 a 29 years
Black women	92,0	89,4	83,8	89,4	93,5
White women	90,5	86,5	79,6	86,2	91,5
Black men	78,5	73,0	66,8	71,4	79,8
White men	80,1	72,7	64,2	70,9	81,0
Total¹	85,4	80,5	73,8	79,6	86,5

Brazil, 2019 (In %)

Sex and color/race	Total population aged 14 and over	Young people aged 14 to 29	14 a 17 years	18 a 24 years	25 a 29 years
Black women	92,9	90,0	84,6	90,3	93,8
White women	91,7	87,6	80,6	87,5	92,3
Black men	77,7	71,0	63,6	70,2	77,9
White men	80,8	72,8	64,8	72,1	79,3
Total¹	85,9	80,3	73,4	80,0	85,8

Brazil, 2018 (In %)

Sex and color/race	Total population aged 14 and over	Young people aged 14 to 29	14 a 17 years	18 a 24 years	25 a 29 years
Black women	93,2	90,9	85,6	91,0	94,9
White women	91,6	86,8	81,2	85,9	91,6
Black men	77,7	70,9	62,9	70,2	78,5
White men	79,8	70,1	62,3	68,7	77,3
Total¹	85,8	79,8	73,2	79,2	85,7

Source: IBGE. Continuous Annual Pnad (5th interview)

Note: (1) The total includes people of unknown color/race and indigenous people.

(2) The sample does not include a breakdown for this category (maximum CV of 15.0%)

Note: a) Black people= black and brown; White people= white and yellow

Estimated proportion of working-age people who did household chores in their own home or in a relative's home, by age group, sex and color/race

State of São Paulo, 2022 (In %)

Sex and color/race	Total population aged 14 and over	Young people aged 14 to 29	14 a 17 years	18 a 24 years	25 a 29 years
Black women	93,0	89,1	82,6	89,3	92,8
White women	91,0	85,4	77,1	84,8	91,8
Black men	82,7	77,6	74,7	75,2	82,7
White men	81,0	73,1	62,4	71,7	82,5
Total¹	86,9	81,0	73,6	79,9	87,5

State of São Paulo, 2019 (In %)

Sex and color/race	Total population aged 14 and over	Young people aged 14 to 29	14 a 17 years	18 a 24 years	25 a 29 years
Black women	94,1	89,9	83,9	90,0	93,5
White women	92,0	86,9	78,5	87,2	91,8
Black men	83,5	77,1	72,1	75,3	82,7
White men	82,9	74,0	66,8	72,7	80,2
Total¹	88,2	81,8	75,0	81,2	86,9

State of São Paulo, 2018 (In %)

Sex and color/race	Total population aged 14 and over	Young people aged 14 to 29	14 a 17 years	18 a 24 years	25 a 29 years
Black women	93,8	90,0	83,5	90,3	94,1
White women	91,5	83,7	77,3	83,2	88,9
Black men	81,0	72,8	65,6	70,0	82,7
White men	80,2	67,1	60,2	64,1	75,7
Total¹	86,7	78,1	71,2	76,6	84,9

Source: IBGE. Continuous Annual Pnad (5th interview)

Note: (1) The total includes people of unknown color/race and indigenous people.

(2) The sample does not include a breakdown for this category (maximum CV of 15.0%)

Note: a) Black people= black and brown; White people= white and yellow

Estimated proportion of working-age people who did household chores in their own home or in a relative's home, by age group, sex and color/race

São Paulo Metropolitan Region, 2022 (In %)

Sex and color/race	Total population aged 14 and over	Young people aged 14 to 29	14 a 17 years	18 a 24 years	25 a 29 years
Black women	93,1	87,4	80,5	89,2	90,0
White women	90,7	84,3	70,6	86,5	91,1
Black men	81,6	75,5	67,8	75,5	81,5
White men	80,9	72,7	54,6	73,5	83,9
Total¹	86,7	79,8	68,1	80,8	86,9

São Paulo Metropolitan Region, 2019 (In %)

Sex and color/race	Total population aged 14 and over	Young people aged 14 to 29	14 a 17 years	18 a 24 years	25 a 29 years
Black women	94,6	90,1	83,4	90,4	94,3
White women	93,4	89,0	79,2	89,7	94,3
Black men	86,6	79,5	77,4	75,3	86,4
White men	85,3	75,5	65,0	75,6	81,6
Total¹	90,1	83,3	76,1	82,7	88,7

São Paulo Metropolitan Region, 2018 (In %)

Sex and color/race	Total population aged 14 and over	Young people aged 14 to 29	14 a 17 years	18 a 24 years	25 a 29 years
Black women	93,1	88,6	85,1	87,3	92,8
White women	90,7	80,9	75,0	80,2	85,4
Black men	80,0	70,6	66,4	66,5	79,1
White men	78,3	63,6	54,2	59,8	74,5
Total¹	85,7	75,7	69,7	73,4	82,6

Source: IBGE. Continuous Annual Pnad (5th interview)

Note: (1) The total includes people of unknown color/race and indigenous people.

(2) The sample does not include a breakdown for this category (maximum CV of 15.0%)

Note: a) Black people= black and brown; White people= white and yellow

Estimated proportion of working-age people who did household chores in their own home or in a relative's home, by age group, sex and color/race

Municipality of São Paulo, 2022 (In %)

Sex and color/race	Total population aged 14 and over	Young people aged 14 to 29	14 a 17 years	18 a 24 years	25 a 29 years
Black women	92,2	85,0	81,8	86,3	85,6
White women	90,9	84,4	63,1	87,9	93,7
Black men	79,6	73,5	66,9	70,0	82,0
White men	81,8	73,7	43,5	76,9	87,0
Total¹	86,5	79,1	63,0	80,3	87,7

Municipality of São Paulo, 2019 (In %)

Sex and color/race	Total population aged 14 and over	Young people aged 14 to 29	14 a 17 years	18 a 24 years	25 a 29 years
Black women	95,0	90,6	84,6	91,0	94,9
White women	93,2	88,4	74,8	90,9	94,5
Black men	86,5	79,6	78,0	75,3	85,8
White men	84,5	76,0	62,9	79,0	79,3
Total¹	89,9	83,3	74,9	83,9	87,8

Municipality of São Paulo, 2018 (In %)

Sex and color/race	Total population aged 14 and over	Young people aged 14 to 29	14 a 17 years	18 a 24 years	25 a 29 years
Black women	92,5	87,0	85,1	84,7	91,4
White women	89,8	78,7	68,2	78,2	85,8
Black men	79,6	69,8	66,0	65,2	78,6
White men	77,1	60,5	45,9	59,0	70,9
Total¹	85,0	73,9	65,9	72,2	81,1

Source: IBGE. Continuous Annual Pnad (5th interview)

Note: (1) The total includes people of unknown color/race and indigenous people.

(2) The sample does not include a breakdown for this category (maximum CV of 15.0%)

Note: a) Black people= black and brown; White people= white and yellow

Estimate of the proportion of people of working age who carried out care tasks for household residents or non-resident relatives, by age group, sex and color/race

Brazil, 2022 (In %)

Sex and color/race	Total population aged 14 and over	Young people aged 14 to 29	14 a 17 years	18 a 24 years	25 a 29 years
Black women	37,7	40,4	28,6	37,9	51,9
White women	31,5	30,2	23,1	27,2	39,2
Black men	23,6	21,0	19,6	17,1	27,3
White men	22,8	17,8	17,8	13,3	23,8
Total¹	29,3	27,9	22,6	24,5	36,3

Brazil, 2019 (In %)

Sex and color/race	Total population aged 14 and over	Young people aged 14 to 29	14 a 17 years	18 a 24 years	25 a 29 years
Black women	41,6	44,5	31,3	42,0	58,4
White women	35,6	35,0	27,4	30,4	46,1
Black men	27,8	24,4	21,4	19,5	34,1
White men	26,6	20,6	19,1	16,1	27,9
Total¹	33,3	31,8	25,2	27,7	42,5

Brazil, 2018 (In %)

Sex and color/race	Total population aged 14 and over	Young people aged 14 to 29	14 a 17 years	18 a 24 years	25 a 29 years
Black women	42,4	46,5	33,5	43,8	60,5
White women	35,8	35,8	29,3	31,3	46,0
Black men	28,2	25,1	21,8	20,8	34,3
White men	26,8	21,0	19,1	16,5	28,3
Total¹	33,7	32,8	26,3	28,9	43,2

Source: IBGE. Annual Continuous PNAD (5th interview)

Note: (1) The total includes people of unknown color/race and indigenous people.

(2) The sample does not include a breakdown for this category (maximum CV of 15.0%)

Note: a) Black people= black and brown; white people= white and yellow

Estimate of the proportion of people of working age who carried out care tasks for household residents or non-resident relatives, by age group, sex and color/race

State of São Paulo, 2022 (In %)

Sex and color/race	Total population aged 14 and over	Young people aged 14 to 29	14 a 17 years	18 a 24 years	25 a 29 years
Black women	34,5	36,2	25,0	35,6	43,7
White women	31,4	30,0	24,0	25,3	40,4
Black men	22,3	19,1	19,7	14,4	24,8
White men	22,8	17,4	17,7	12,1	24,4
Total¹	27,8	25,3	21,5	21,2	33,3

State of São Paulo, 2019 (In %)

Sex and color/race	Total population aged 14 and over	Young people aged 14 to 29	14 a 17 years	18 a 24 years	25 a 29 years
Black women	43,6	44,9	31,1	41,3	58,8
White women	35,7	33,7	30,2	27,9	43,7
Black men	30,7	28,3	23,8	20,5	41,9
White men	27,9	21,9	20,9	16,8	28,9
Total¹	34,1	31,8	26,5	26,2	42,5

State of São Paulo, 2018 (In %)

Sex and color/race	Total population aged 14 and over	Young people aged 14 to 29	14 a 17 years	18 a 24 years	25 a 29 years
Black women	43,4	45,6	38,1	40,7	58,1
White women	35,4	32,7	29,8	28,5	39,8
Black men	30,0	26,1	27,3	21,5	32,2
White men	27,2	19,7	20,8	15,2	24,8
Total¹	33,6	30,5	28,5	26,1	37,9

Source: IBGE. Annual Continuous PNAD (5th interview)

Note: (1) The total includes people of unknown color/race and indigenous people.

(2) The sample does not include a breakdown for this category (maximum CV of 15.0%)

Note: a) Black people= black and brown; white people= white and yellow

Estimate of the proportion of people of working age who carried out care tasks for household residents or non-resident relatives, by age group, sex and color/race

São Paulo Metropolitan Region, 2022 (In %)

Sex and color/race	Total population aged 14 and over	Young people aged 14 to 29	14 a 17 years	18 a 24 years	25 a 29 years
Black women	31,6	29,9	20,3	28,9	37,6
White women	28,9	25,9	24,3	19,8	34,2
Black men	20,9	16,5	(2)	12,7	21,3
White men	21,0	14,7	(2)	(2)	18,7
Total¹	25,7	21,6	19,4	17,5	28,2

São Paulo Metropolitan Region, 2019 (In %)

Sex and color/race	Total population aged 14 and over	Young people aged 14 to 29	14 a 17 years	18 a 24 years	25 a 29 years
Black women	43,3	42,3	27,6	39,6	56,7
White women	36,0	34,3	29,7	29,0	44,7
Black men	32,1	27,3	(2)	19,5	38,7
White men	27,9	21,0	(2)	(2)	25,8
Total¹	34,7	30,9	26,4	26,0	40,5

São Paulo Metropolitan Region, 2018 (In %)

Sex and color/race	Total population aged 14 and over	Young people aged 14 to 29	14 a 17 years	18 a 24 years	25 a 29 years
Black women	43,8	45,7	40,2	39,0	58,7
White women	34,9	28,1	26,3	23,9	34,1
Black men	30,0	25,0	29,6	17,6	32,4
White men	27,1	19,1	(2)	15,6	21,6
Total¹	33,8	29,2	29,2	24,0	36,0

Source: IBGE. Annual Continuous PNAD (5th interview)

Note: (1) The total includes people of unknown color/race and indigenous people.

(2) The sample does not include a breakdown for this category (maximum CV of 15.0%)

Note: a) Black people= black and brown; white people= white and yellow

Estimate of the proportion of people of working age who carried out care tasks for household residents or non-resident relatives, by age group, sex and color/race

Municipality of São Paulo, 2022 (In %)

Sex and color/race	Total population aged 14 and over	Young people aged 14 to 29	14 a 17 years	18 a 24 years	25 a 29 years
Black women	27,9	27,2	(2)	24,8	32,3
White women	28,3	23,8	(2)	19,3	30,5
Black men	19,1	16,0	(2)	(2)	19,4
White men	19,8	(2)	(2)	(2)	(2)
Total¹	24,1	20,1	19,3	16,8	24,5

Municipality of São Paulo, 2019 (In %)

Sex and color/race	Total population aged 14 and over	Young people aged 14 to 29	14 a 17 years	18 a 24 years	25 a 29 years
Black women	43,6	40,8	(2)	40,2	50,6
White women	35,0	33,0	(2)	28,8	40,4
Black men	31,1	26,4	(2)	(2)	32,9
White men	26,5	(2)	(2)	(2)	(2)
Total¹	33,8	29,8	27,7	26,3	35,6

Municipality of São Paulo, 2018 (In %)

Sex and color/race	Total population aged 14 and over	Young people aged 14 to 29	14 a 17 years	18 a 24 years	25 a 29 years
Black women	43,4	47,2	45,2	41,1	57,2
White women	33,3	25,5	(2)	(2)	29,0
Black men	29,3	25,2	(2)	(2)	34,4
White men	25,7	16,4	(2)	(2)	(2)
Total¹	32,7	28,5	28,4	24,4	33,7

Source: IBGE. Annual Continuous PNAD (5th interview)

Note: (1) The total includes people of unknown color/race and indigenous people.

(2) The sample does not include a breakdown for this category (maximum CV of 15.0%)

Note: a) Black people= black and brown; white people= white and yellow

Estimated average number of hours per week dedicated by the working-age population to household chores and/or care tasks, by age group, sex and color/race

Brazil, 2022 (In hours)

Sex and color/race	Total population aged 14 and over	Young people aged 14 to 29	14 a 17 years	18 a 24 years	25 a 29 years
Black women	22,0	18,9	13,1	19,0	22,6
White women	20,4	16,1	11,1	16,1	19,2
Black men	11,7	10,4	8,9	10,4	11,4
White men	11,7	9,7	8,0	9,7	10,8
Total¹	17,0	14,3	10,6	14,3	16,5

Brazil, 2019 (In hours)

Sex and color/race	Total population aged 14 and over	Young people aged 14 to 29	14 a 17 years	18 a 24 years	25 a 29 years
Black women	22,1	19,2	12,6	19,6	23,1
White women	20,8	16,5	11,1	16,2	19,9
Black men	11,0	9,7	8,0	9,5	11,1
White men	10,9	9,2	7,3	9,1	10,3
Total¹	16,8	14,2	10,1	14,2	16,7

Brazil, 2018 (In hours)

Sex and color/race	Total population aged 14 and over	Young people aged 14 to 29	14 a 17 years	18 a 24 years	25 a 29 years
Black women	21,9	18,8	12,8	19,0	22,7
White women	21,0	16,8	11,8	16,5	20,1
Black men	10,9	9,6	7,8	9,6	10,7
White men	10,9	9,2	7,2	9,1	10,4
Total¹	16,8	14,1	10,3	14,2	16,5

Source: IBGE. Annual Continuous PNAD (5th interview)

Note: (1) The total includes people of unknown color/race and indigenous people.

(2) The sample does not include a breakdown for this category (maximum CV of 15.0%)

Note: a) Black people= black and brown; white people= white and yellow

Estimated average number of hours per week dedicated by the working-age population to household chores and/or care tasks, by age group, sex and color/race

State of São Paulo, 2022 (In hours)

Sex and color/race	Total population aged 14 and over	Young people aged 14 to 29	14 a 17 years	18 a 24 years	25 a 29 years
Black women	21,8	17,7	13,6	17,4	20,3
White women	20,7	15,6	10,8	15,6	18,5
Black men	12,2	11,2	9,4	11,0	12,5
White men	12,2	9,6	7,9	9,6	10,6
Total¹	17,1	13,6	10,4	13,5	15,6

State of São Paulo, 2019 (In hours)

Sex and color/race	Total population aged 14 and over	Young people aged 14 to 29	14 a 17 years	18 a 24 years	25 a 29 years
Black women	23,8	20,0	11,9	20,8	23,6
White women	21,8	16,5	9,9	16,4	20,4
Black men	11,5	9,9	8,4	9,3	11,3
White men	11,0	9,1	7,4	9,2	10,0
Total¹	17,4	14,0	9,5	14,2	16,5

State of São Paulo, 2018 (In hours)

Sex and color/race	Total population aged 14 and over	Young people aged 14 to 29	14 a 17 years	18 a 24 years	25 a 29 years
Black women	22,9	18,4	12,3	18,8	21,8
White women	21,8	16,7	12,1	16,1	20,2
Black men	11,2	9,7	7,4	10,0	10,9
White men	11,0	9,0	6,2	9,2	10,4
Total¹	17,2	13,8	9,8	13,9	16,2

Source: IBGE. Annual Continuous PNAD (5th interview)

Note: (1) The total includes people of unknown color/race and indigenous people.

(2) The sample does not include a breakdown for this category (maximum CV of 15.0%)

Note: a) Black people= black and brown; white people= white and yellow

Estimated average number of hours per week dedicated by the working-age population to household chores and/or care tasks, by age group, sex and color/race

São Paulo Metropolitan Region, 2022 (In hours)

Sex and color/race	Total population aged 14 and over	Young people aged 14 to 29	14 a 17 years	18 a 24 years	25 a 29 years
Black women	21,3	15,8	13,3	15,0	18,2
White women	19,6	14,6	12,1	13,3	17,6
Black men	12,3	11,0	9,4	11,1	12,0
White men	11,5	9,1	8,7	9,2	9,2
Total¹	16,5	12,8	11,0	12,2	14,5

São Paulo Metropolitan Region, 2019 (In hours)

Sex and color/race	Total population aged 14 and over	Young people aged 14 to 29	14 a 17 years	18 a 24 years	25 a 29 years
Black women	24,1	19,9	12,6	20,2	23,9
White women	21,9	17,3	9,9	16,8	22,3
Black men	11,9	10,5	10,1	9,7	11,7
White men	11,2	9,0	7,1	9,5	9,5
Total¹	17,7	14,3	10,0	14,3	16,7

São Paulo Metropolitan Region, 2018 (In hours)

Sex and color/race	Total population aged 14 and over	Young people aged 14 to 29	14 a 17 years	18 a 24 years	25 a 29 years
Black women	22,6	17,9	12,1	18,1	21,0
White women	21,7	16,6	12,0	16,4	19,3
Black men	10,8	9,5	8,4	9,0	10,6
White men	10,5	9,1	6,6	9,2	10,3
Total¹	17,0	13,6	10,0	13,7	15,5

Source: IBGE. Annual Continuous PNAD (5th interview)

Note: (1) The total includes people of unknown color/race and indigenous people.

(2) The sample does not include a breakdown for this category (maximum CV of 15.0%)

Note: a) Black people= black and brown; white people= white and yellow

Estimated average number of hours per week dedicated by the working-age population to household chores and/or care tasks, by age group, sex and color/race

Municipality of São Paulo, 2022 (In hours)

Sex and color/race	Total population aged 14 and over	Young people aged 14 to 29	14 a 17 years	18 a 24 years	25 a 29 years
Black women	21,0	15,4	13,6	14,3	18,1
White women	18,5	13,3	10,1	12,2	15,9
Black men	12,4	11,2	9,1	10,5	13,0
White men	11,0	8,6	(2)	9,0	8,2
Total¹	16,0	12,1	10,5	11,4	13,6

Municipality of São Paulo, 2019 (In hours)

Sex and color/race	Total population aged 14 and over	Young people aged 14 to 29	14 a 17 years	18 a 24 years	25 a 29 years
Black women	25,3	20,8	14,8	21,9	23,7
White women	21,8	18,0	8,5	17,7	24,0
Black men	13,0	11,5	12,1	11,3	11,5
White men	11,6	9,8	(2)	11,0	9,0
Total¹	18,3	15,1	10,9	15,6	16,7

Municipality of São Paulo, 2018 (In hours)

Sex and color/race	Total population aged 14 and over	Young people aged 14 to 29	14 a 17 years	18 a 24 years	25 a 29 years
Black women	21,7	17,8	11,6	17,5	22,0
White women	21,4	16,8	(2)	15,9	19,9
Black men	10,6	8,9	6,4	8,6	10,7
White men	10,2	8,2	5,7	8,0	9,4
Total¹	16,7	13,4	9,4	13,1	15,8

Source: IBGE. Annual Continuous PNAD (5th interview)

Note: (1) The total includes people of unknown color/race and indigenous people.

(2) The sample does not include a breakdown for this category (maximum CV of 15.0%)

Note: a) Black people= black and brown; white people= white and yellow

CREDITS

Realization: CEERT

Partnership:

Rede Multiatores Mude com Elas
Ação Educativa
Terre des Hommes Germany
BMZ

General coordination:

Daniel Teixeira
Mario Rogério da Silva Bento

Writing and research::

Mario Rogério da Silva Bento Rafael
Bassegio Caumo
Sara Tchoya

Technical review and editing:

Júlia Rosemberg

Design and layout:

Gael Benítez

Photos:

DepositPhotos
Freepik

Translation:

Bárbara Soares da Silva
Fábio Anderson Ribeiro dos Santos
Andressa Soares da Silva
Equipe Casa da Tradução Ltda.